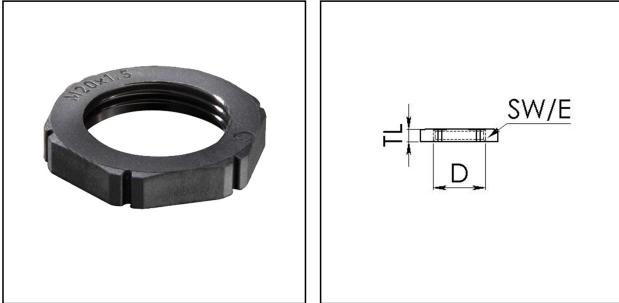


EMUG 25

Locknut, polyamide, RAL 9005, M25



Product illustrations are exemplary and may differ from the chosen product. Further variants and individual customization, we will gladly provide you on request.



Material	Polyamide, fibre reinforced
Temp. range min	-40 °C
Temp. range max	100 °C
Thread type	M
Ø Connection thread D	25
Lead	1,5
Total length TL	6 mm
Key width SW	32 mm
Collar diameter (E)	35 mm
Product Color	RAL 9005
Order no. RAL 9005	10061783
Type	EMUG 25
Packing unit	100
ETIM-Classification	EC000940

06.07.2018

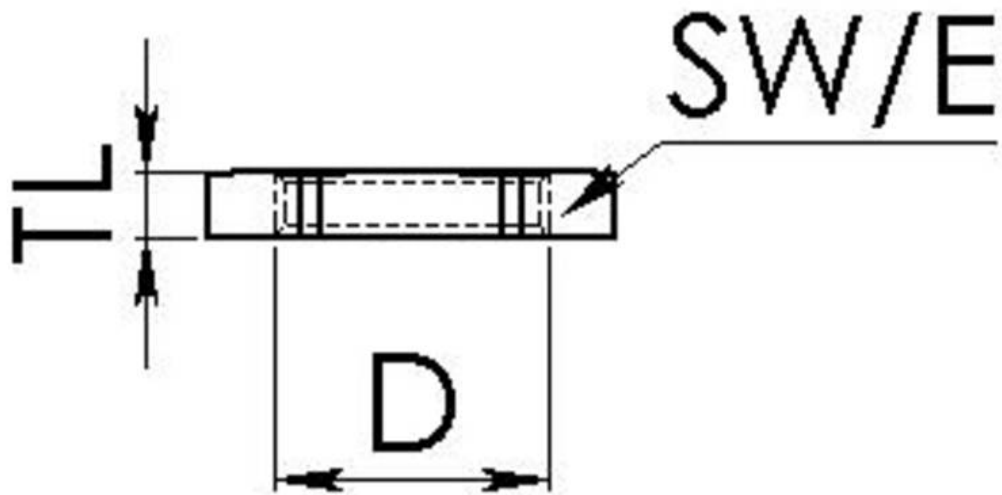
Your Contact:

WISKA Hoppmann GmbH

Kisdorfer Weg 28 · 24568 Kaltenkirchen · Germany

☎ +49-4191-508-0 · 📠 +49-4191-508-209

contact@wiska.de · www.wiska.com



Your Contact:

WISKA Hoppmann GmbH

Kisdorfer Weg 28 · 24568 Kaltenkirchen · Germany

☎ +49-4191-508-0 · 📠 +49-4191-508-209

contact@wiska.de · www.wiska.com