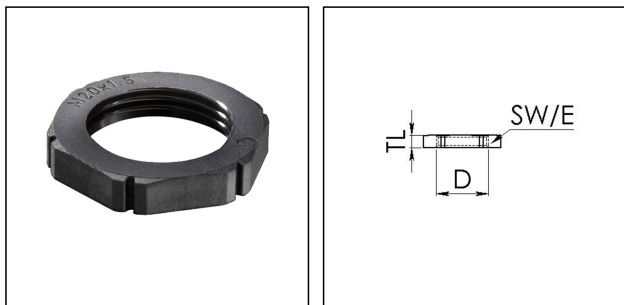


EMUG 32

Locknut, polyamide, RAL 9005, M32



Product illustrations are exemplary and may differ from the chosen product. Further variants and individual customization, we will gladly provide you on request.



Material	Polyamide, fibre reinforced
Temp. range min	-40 °C
Temp. range max	100 °C
Thread type	M
Ø Connection thread D	32
Lead	1,5
Total length TL	6 mm
Key width SW	40 mm
Collar diameter (E)	45 mm
Product Color	RAL 9005
Order no. RAL 9005	10061784
Type	EMUG 32
Packing unit	100
ETIM-Classification	EC000940

06.07.2018

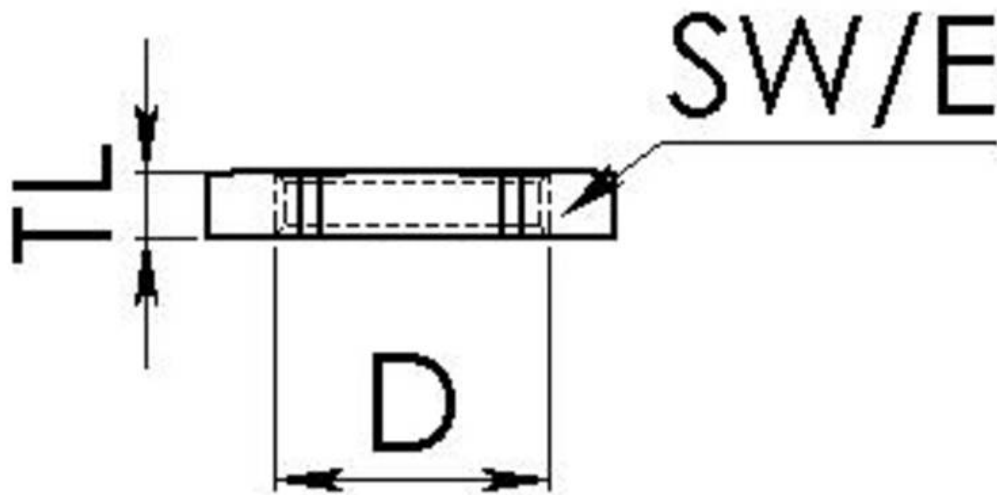
Your Contact:

WISKA Hoppmann GmbH

Kisdorfer Weg 28 · 24568 Kaltenkirchen · Germany

☎ +49-4191-508-0 · 📠 +49-4191-508-209

contact@wiska.de · www.wiska.com



Your Contact:

WISKA Hoppmann GmbH

Kisdorfer Weg 28 · 24568 Kaltenkirchen · Germany

☎ +49-4191-508-0 · 📠 +49-4191-508-209

contact@wiska.de · www.wiska.com