

## DK-101xx: DK-10100, DK-10101, DK-10111, DK-10110

*Development Kit for ICP-101xx High Accuracy, Low Power, Barometric Pressure and Temperature Sensor*

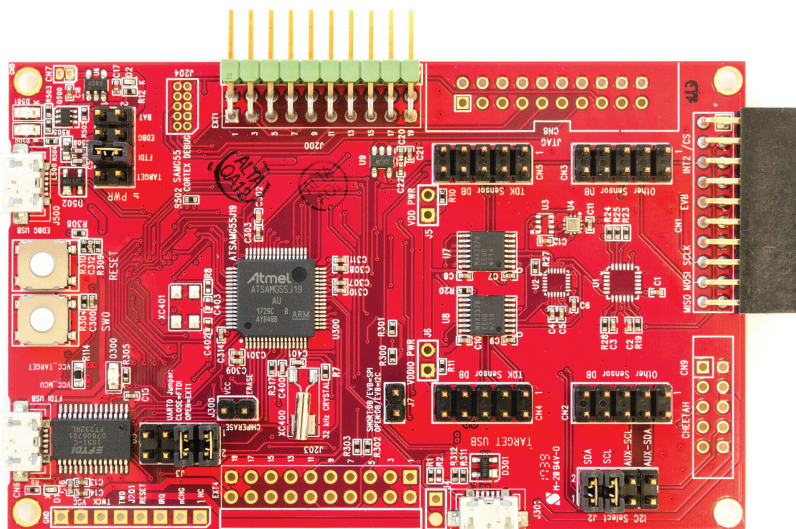
### Overview

The DK-10100 is a comprehensive development platform for ICP-10100, ICP-10101, ICP-10111, and ICP-10110, a High Accuracy, Low Power, Waterproof\* Barometric Pressure and Temperature Sensor IC.

The platform designed around Microchip G55 MCU can be used by developers for rapid evaluation and development of ICP-101xx based solutions. The DK-101xx includes an on-board Embedded Debugger so external tools are not required to program or debug the G55 MCU.

### Key Features

- ICP-101xx Pressure and Temperature Sensor
- Microchip G55 MCU with 512KB Flash
- On-board embedded debugger for programming and debugging
- USB connectors for host interface to
- Support software debug and sensor data logging
- Board power supply through USB



Part Number	Development Kit
ICP-10100	DK-10100
ICP-10101	DK-10101
ICP-10110	DK-10110
ICP-10111	DK-10111

The development kit comes with necessary software including InvenSense MotionLink, a GUI based development tool and embedded Motion Drivers for ICP-101xx.

Embedded Motion Drivers (eMD) consists of a set of APIs to configure various aspects of the platform including ICP-101xx sensor parameters such as Raw Data, and Calibrated Data (Temp in C, Pressure in Pa).

MotionLink is a GUI based development tool included with the platform. It can be used to capture and visualize the sensor data from the motion sensor.

\* – DK-10100 and DK-10110 only