

Accessories for pluggable interface relays CR-U

Pluggable function modules

Data sheet

2CDC 291 038 F0004



CR-U xx

Features

- Pluggable function modules for mounting on standard sockets for interface relays CR-U
- Function modules: Reverse polarity protection/Free wheeling diode, LED indication, RC elements, overload protection

Approvals

- CAN/CSA C22.2 No.14
- GOST

(except CR-U 41B, CR-U 41BV, CR-U 41C, CR-U 41CV, CR-U 51D, CR-U 61CV, CR-U 61E, CR-U 61EV, CR-U 61D, CR-U 61DV, CR-U 91C)

Marks

- CE

Order data

Type	Rated control supply voltage	Version	Order code
Diode - Reverse polarity protection			
CR-U 21	6-230 V DC	A1+, A2-	1SVR 405 661 R0000
Diode and LED - Reverse polarity protection			
CR-U 41	6-24 V DC	red, A1+, A2-	1SVR 405 662 R0000
CR-U 41V	6-24 V DC	green, A1+, A2-	1SVR 405 662 R1000
CR-U 41B	24-60 V DC	red, A1+, A2-	1SVR 405 662 R4000
CR-U 41BV	24-60 V DC	green, A1+, A2-	1SVR 405 662 R4100
CR-U 41C	110-230 V DC	red, A1+, A2-	1SVR 405 662 R9000
CR-U 41CV	110-230 V DC	green, A1+, A2-	1SVR 405 662 R9100
RC element - Arc elimination			
CR-U 51B	6-24 V AC		1SVR 405 663 R0000
CR-U 51D	24-60 V AC		1SVR 405 663 R4000
CR-U 51C	110-230 V AC		1SVR 405 663 R1000
Diode and LED			
CR-U 61	6-24 V AC/DC	red, for DC: A1+, A2-	1SVR 405 664 R0000
CR-U 61V	6-24 V AC/DC	green, for DC: A1+, A2-	1SVR 405 664 R1000
CR-U 61E	24-60 V AC/DC	red, for DC: A1+, A2-	1SVR 405 664 R4000
CR-U 61EV	24-60 V AC/DC	green, for DC: A1+, A2-	1SVR 405 664 R4100
CR-U 91	110-230 V AC/DC	red, for DC: A1+, A2-	1SVR 405 664 R0100
CR-U 91V	110-230 V AC/DC	green, for DC: A1+, A2-	1SVR 405 664 R1100
Varistor and LED - Overvoltage protection			
CR-U 61C	6-24 V AC/DC	red, for DC: A1+, A2-	1SVR 405 665 R0000
CR-U 61CV	6-24 V AC/DC	green, for DC: A1+, A2-	1SVR 405 665 R1000
CR-U 61D	24-60 V AC/DC	red, for DC: A1+, A2-	1SVR 405 665 R4000
CR-U 61DV	24-60 V AC/DC	green, for DC: A1+, A2-	1SVR 405 665 R4100
CR-U 91C	110-230 V AC/DC	red, for DC: A1+, A2-	1SVR 405 665 R0100
CR-U 91CV	110-230 V AC/DC	green, for DC: A1+, A2-	1SVR 405 665 R1100
Varistor - Overvoltage protection			
CR-U 71	24 V AC		1SVR 405 666 R0000
CR-U 71A	115 V AC		1SVR 405 666 R1000
CR-U 81	230 V AC		1SVR 405 666 R2000

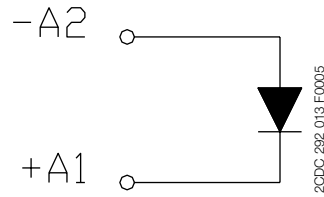
Bold printed products = stocked products. Packing unit = 10 pieces.

Accessories for pluggable interface relays CR-U

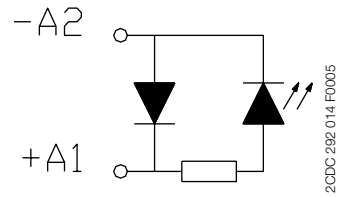
Pluggable function modules

Data sheet

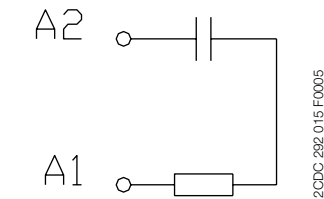
Connection diagrams



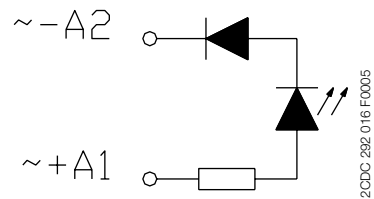
CR-U 21



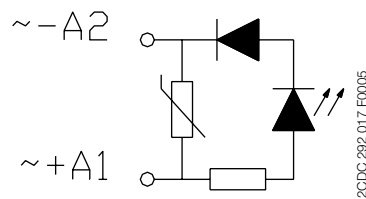
CR-U 41, CR-U 41V, CR-U 41B, CR-U 41BV, CR-U 41C, CR-U 41CV



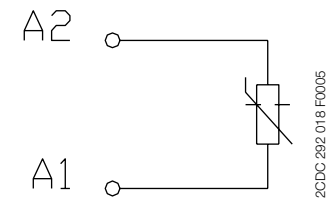
CR-U 51B, CR-U 51D, CR-U 51C



CR-U 61, CR-U 61V, CR-U 61E, CR-U 61EV, CR-U 91, CR-U 91V



CR-U 61C, CR-U 61CV, CR-U 61D, CR-U 61DV, CR-U 91C, CR-U 91CV



CR-U 71, CR-U 71A, CR-U 81

Technical data

Type	CR-U	
	21	
Version	Diode	
Function	Reverse polarity protection	
Control supply voltage	6-230 V DC	
Component data	Diode	1 A, 1000 V
Polarized	yes (A1+, A2-)	
Material	Enclosure / Base	PA6 + GF V2

Type	CR-U							
	41		41V		41B		41C	
Version	Diode and LED							
Function	Reverse polarity protection, applied supply voltage indicated via LED							
Control supply voltage	6-24 V DC		24-60 V DC		110-230 V DC			
Component data	Diode		1 A, 1000 V					
	LED		red	green	red	green	red	green
	Resistance		3.3 kΩ, 0.4 W		12 kΩ, 1 W		47 kΩ, 1 W	
Polarized	yes (A1+, A2-)							
Material	Enclosure / Base		PA6 + GF V2					

Accessories for pluggable interface relays CR-U

Pluggable function modules

Data sheet

Technical data (continued)

Type	CR-U		
	51B	51D	51C
Version	RC element		
Function	Arc elimination		
Control supply voltage	6-24 V AC	24-60 V AC	110-230 V AC
Component data	Capacitor	0.22 μ F, 160 V AC	0.1 μ F, 630 V AC
	Resistance	0.22 k Ω , 1 W	0.47 k Ω , 0.4 W
Polarized	no		
Material	Enclosure / Base PA6 + GF V2		

Type	CR-U					
	61	61V	61E	61EV	91	91V
Version	Diode and LED					
Function						
Control supply voltage	6-24 V AC/DC		24-60 V AC/DC		110-230 V AC/DC	
Component data	Diode					
	1 A, 1000 V					
	LED	red	green	red	green	red
Resistance	3.3 k Ω , 1 W		12 k Ω , 1 W		47 k Ω , 1 W	
Polarized	AC: no, DC: yes (A1+, A2-)					
Material	Enclosure / Base PA6 + GF V2					

Type	CR-U						
	61C	61CV	61D	61DV	91C	91CV	
Version	Varistor and LED						
Function							
Control supply voltage	6-24 V AC/DC		24-60 V AC/DC		110-230 V AC/DC		
Component data	Diode						
	1 A, 1000 V						
	LED	red	green	red	green	red	green
	Varistor	25 V AC		75 V AC		275 V AC	
Resistance	3.3 k Ω , 0.4 W		12 k Ω , 1 W		47 k Ω , 1 W		
Polarized	AC: no, DC: yes (A1+, A2-)						
Material	Enclosure / Base PA6 + GF V2						

Type	CR-U		
	71	71A	81
Version	Varistor		
Function			
Control supply voltage	24 V AC	115 V AC	230 V AC
Component data	Varistor		
	25 V AC	115 V AC	275 V AC
Polarized	no		
Material	Enclosure / Base PA6 + GF V2		

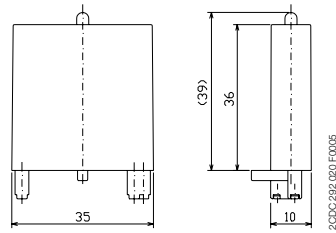
Accessories for pluggable interface relays CR-U

Pluggable function modules

Data sheet

Dimensions

in mm



Further documentation

Document title	Document type	Document number
Sockets CR-U	Data sheet	2CDC 117 006 D0203
Relays CR-U	Data sheet	2CDC 117 003 D0204



ABB STOTZ-KONTAKT GmbH

Eppelheimer Strasse 82, 69123 Heidelberg, Germany
Postfach 10 16 80, 69006 Heidelberg, Germany
Internet <http://www.abb.com/lowvoltage> → Control Products

Contact: <http://www.abb.com/contacts> → Low Voltage Products and Systems

As part of the on-going product improvement, ABB reserves the right to modify the characteristics of the products described in this document. The information given is non-contractual.

For further details please contact (www.abb.com/contacts) the ABB company marketing these products in your country.