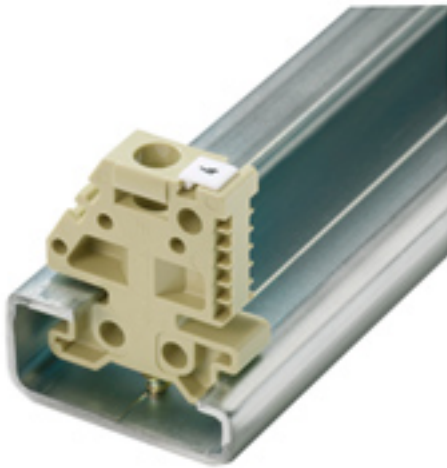


Accessories
EWK 1

Weidmüller Interface GmbH & Co. KG
Klingenbergstraße 16
D-32758 Detmold
Germany
Fon: +49 5231 14-0
Fax: +49 5231 14-292083
www.weidmueller.com

**Klippon® Connect with clamping yoke Technology**

The high reliability and variety of designs of the terminal blocks with clamping yoke connections make planning easier and optimises operational safety. Klippon® Connect provides a proven response to a range of different requirements.

General ordering data

Type	EWK 1
Order No.	0206160000
Version	Accessories, End bracket
GTIN (EAN)	4008190080020
Qty.	50 pc(s).

Accessories
EWK 1

Weidmüller Interface GmbH & Co. KG
 Klingenbergstraße 16
 D-32758 Detmold
 Germany
 Fon: +49 5231 14-0
 Fax: +49 5231 14-292083
 www.weidmueller.com

Technical data**Dimensions and weights**

Width	9 mm	Width (inches)	0.354 inch
Height	27 mm	Height (inches)	1.063 inch
Depth	31 mm	Depth (inches)	1.22 inch
Net weight	4.34 g		

Temperatures

Continuous operating temp., min.	-50 °C	Continuous operating temp., max.	100 °C
----------------------------------	--------	----------------------------------	--------

Material data

Material	Polyamide 66	Colour	Beige
UL 94 flammability rating	V-2		

System specifications

Version	For the terminals	Tightening torque (mounting screw)	1.2...1.9 Nm
Mounting rail	TS 32		

Additional technical data

Installation advice	Direct mounting	Interlock	for screw fixing
Type of mounting	Screwed		

Dimensions

TS 32 offset	13.5 mm
--------------	---------

Classifications

ETIM 3.0	EC001041	ETIM 4.0	EC001041
ETIM 5.0	EC001041	ETIM 6.0	EC001041
UNSPSC	30-21-18-01	eClass 5.1	27-08-10-03
eClass 6.2	27-08-10-03	eClass 7.1	27-08-10-03
eClass 8.1	27-14-11-35	eClass 9.0	27-14-11-35
eClass 9.1	27-14-11-35		

Product information

Descriptive text accessories	For the WEW 32/1, the hinged tag carrier SchT 15/6 No. 1269060000, with marking labels S 10 and WS 12 can be used.
------------------------------	--

Approvals

ROHS	Conform
------	---------

Downloads

Brochure/Catalogue	CAT 1 TERM 16/17 EN
Engineering Data	EPLAN, WSCAD, Zuken E3.S
Engineering Data	0206160000_04520_EWK_1_TS_32_M4X18_STP.stp 04520_EWK_1_DXF.dxf