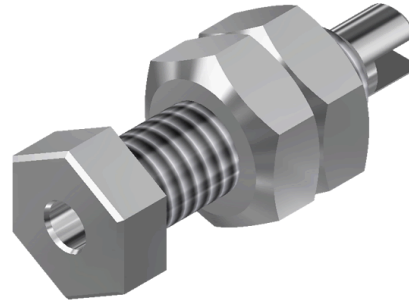
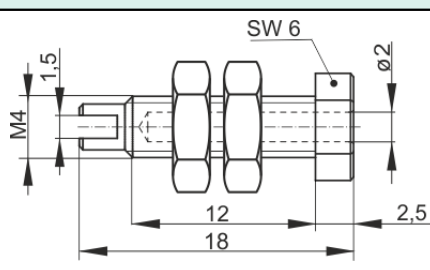


Sockets

MBU 10



Product	MBU 10
description	Unsprung 2 mm built-in socket, compatible with 2 mm spring-loaded plug. Suitable for installation in equipment chassis and switch panels up to a wall thickness of 6 mm.
Articlenummer	938441000 Ni
drawing	
	
technical data	
connection	M4 thread, solder connection
rated voltage ⁽¹⁾	30 VAC / 60 VDC
measurement cat. acc. to IEC 61010	O ⁽³⁾
rated current ⁽¹⁾ (consider derating curve)	6 A
material socket	brass, nickel plated
temperature range acc. To IEC61010 ⁽²⁾	-15 °C to +100 °C
standard	IEC 61010

2 mm system

⁽¹⁾ for normal environmental conditions -5°C to +40°C

⁽²⁾ contact the manufacturer for applications at deviating temperature ranges

⁽³⁾ Other circuits that are not directly connected to mains

stand: 09.07.2018