



Type N F/F In/Out Bulkhead RF Coaxial Surge Protector 10MHz - 1GHz DC Block 1.5kW 20kA Blocking Cap and Gas Tube

RF Surge Protectors Technical Data Sheet

LCSP1024

Features

- Surge current of 20kA
- Max Power 1.5kW
- Frequency range from 10 MHz to 1000 MHz
- N Female to N Female connectors
- VSWR 1.1:1
- Multi-strike capability
- CE & RoHS compliant

Applications

- HF, UHF and VHF radios
- Ham radios
- Remote industrial monitoring

Description

RF surge protector (also known as lightning arrester) LCSP1024 from L-COM utilizing a proprietary surge protection technology protects critical hardware from lightening events while maintaining the RF performance. This RF surge protector component is manufactured in a coaxial in-line design with wide operating frequency range. Optional weather proofing kit and copper cleaning kit are available for purchase separately. All L-COM RF surge protector products are available in stock with same day shipping.

Electrical Specifications

Surge Protector Type
DC Handling

Blocking Cap and Gas Tube
DC Block

Description	Minimum	Typical	Maximum	Units
Frequency Range	10		1,000	MHz
Impedance		50		Ohms
VSWR			1.1:1	
Return Loss			26	dB
Insertion Loss			0.1	dB
Input Power, CW			1.5	kWatts
1.5kW @ 10 to 50MHz				
375W @ 50 to 220MHz				
125W @ 220 to 700MHz				
50W @ 700 to 1000MHz				
Surge Current IEC 61000-4-5 8/20µs WAVEFORM			20	kAmps
Turn On Voltage		600 ±20 %		Volts
Throughput Energy @ 3kA 8/20µs WAVEFORM			3,500	µJ

Click the following link (or enter part number in "SEARCH" on website) to obtain additional part information including price, inventory and certifications: [Type N F/F In/Out Bulkhead RF Coaxial Surge Protector 10MHz - 1GHz DC Block 1.5kW 20kA Blocking Cap and Gas Tube LCSP1024](#)



Type N F/F In/Out Bulkhead RF Coaxial Surge Protector 10MHz
- 1GHz DC Block 1.5kW 20kA Blocking Cap and Gas Tube

RF Surge Protectors Technical Data Sheet

LCSP1024

Mechanical Specifications

Configuration

Input Connector
Output Connector

N Female
N Female

Environmental Specifications

Temperature

Operating Range
Storage Range

-50 to 50 deg C
-55 to +85 deg C

Compliance Certifications (see [product page](#) for current document)

Plotted and Other Data

Notes:

Our portfolio includes cable assemblies, connectors, adapters and custom products, as well as their wireless product line which includes antennas, RF amplifiers, coaxial lightning and surge protectors, and NEMA rated enclosures.

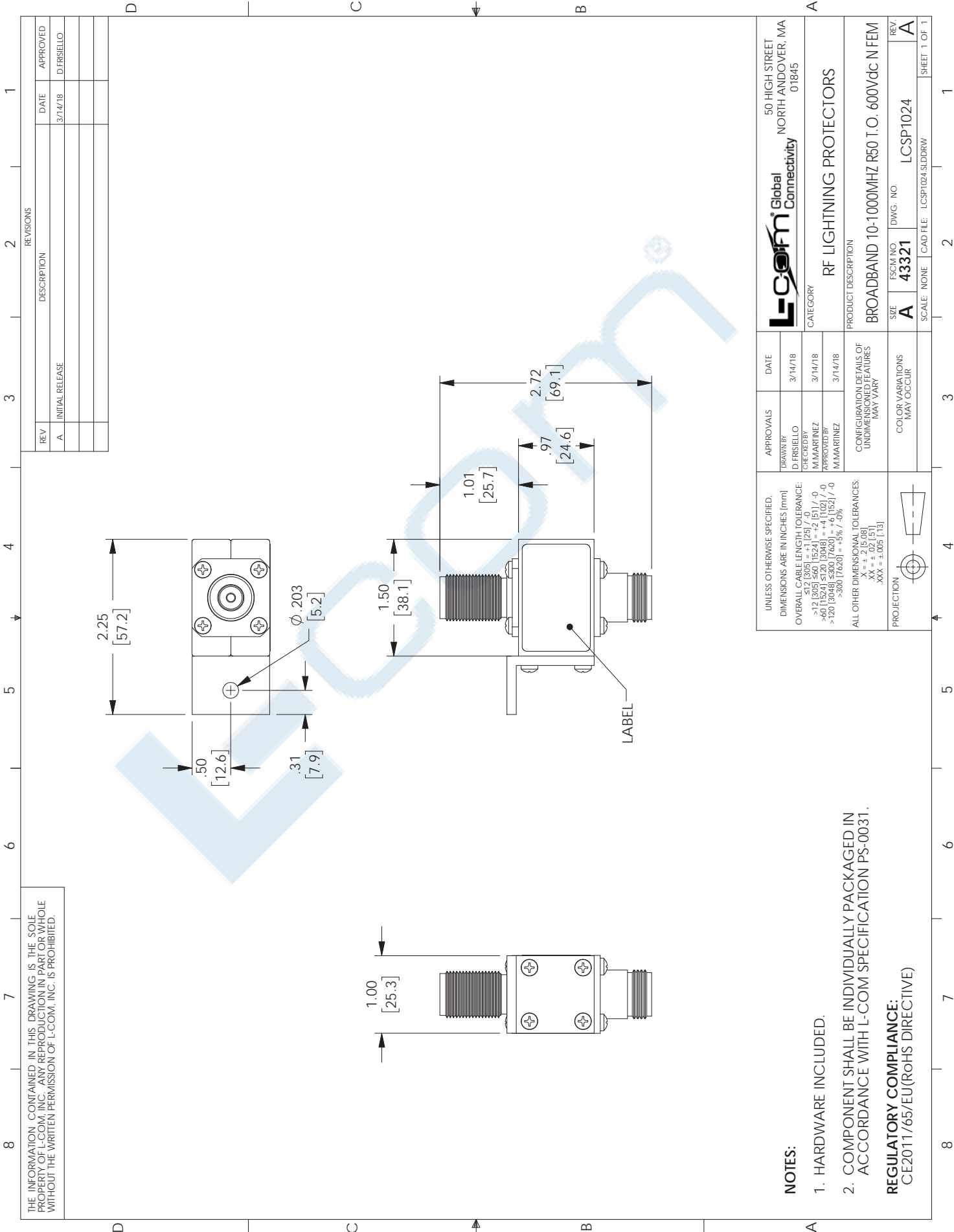
Click the following link (or enter part number in "SEARCH" on website) to obtain additional part information including price, inventory and certifications: [Type N F/F In/Out Bulkhead RF Coaxial Surge Protector 10MHz - 1GHz DC Block 1.5kW 20kA Blocking Cap and Gas Tube LCSP1024](#)

URL:

The information contained in this document is accurate to the best of our knowledge and representative of the part described herein. It may be necessary to make modifications to the part and/or the documentation of the part, in order to implement improvements. L-com reserves the right to make such changes as required. Unless otherwise stated, all specifications are nominal. L-com does not make any representation or warranty regarding the suitability of the part described herein for any particular purpose, and L-com does not assume any liability arising out of the use of any part or documentation.

LCSP1024 CAD Drawing

Type N F/F In/Out Bulkhead RF Coaxial Surge Protector 10MHz - 1GHz DC Block 1.5kW 20kA Blocking Cap and Gas Tube



THE INFORMATION CONTAINED IN THIS DRAWING IS THE SOLE PROPERTY OF L-COM, INC. ANY REPRODUCTION IN PART OR WHOLE WITHOUT THE WRITTEN PERMISSION OF L-COM, INC. IS PROHIBITED.

NOTES:

1. HARDWARE INCLUDED.
2. COMPONENT SHALL BE INDIVIDUALLY PACKAGED IN ACCORDANCE WITH L-COM SPECIFICATION PS-0031.

REGULATORY COMPLIANCE:
CE2011/65/EU(RoHS DIRECTIVE)

REVISIONS			
REV	DESCRIPTION	DATE	APPROVED
A	INITIAL RELEASE	3/14/18	D.FRISIELLO

UNLESS OTHERWISE SPECIFIED, DIMENSIONS ARE IN INCHES (mm) OVERBALL CABLE LENGTH TOLERANCE: $\le 12 (305) = +1 (25) / 0$ >12 (305) 560 (1524) = +2 (51) / 0 >60 (1524) 5720 (3048) = +4 (102) / 0 >120 (3048) 7040 (3048) = +4 (102) / 0 >300 (7620) = -5% / 0 ALL OTHER DIMENSIONAL TOLERANCES: X = ± .005 (0.127) XX = ± .01 (0.254) XXX = ± .005 (0.127)	APPROVALS	DATE	L-Com Global Connectivity 50 HIGH STREET NORTH ANDOVER, MA 01845
	DRAWN BY D. FRISIELLO	3/14/18	
	CHECKED BY M. MARINEZ	3/14/18	CATEGORY RF LIGHTNING PROTECTORS
	APPROVED BY M. MARINEZ	3/14/18	
	CONFIGURATION DETAILS OF UNDIMENSIONED FEATURES MAY VARY		PRODUCT DESCRIPTION BROADBAND 10-1000MHZ R50 T.O. 600Vdc N FEM
	COLOR VARIATIONS MAY OCCUR		SIZE A
			FSCM NO 43321
			DWG. NO. LCSP1024
			REV. A
			SCALE: NONE CAD FILE: LCSP1024.SLDDRW
			SHEET 1 OF 1