



Type N F/F In/Out Bulkhead RF Coaxial Surge Protector 125MHz
- 1GHz DC Block 500W 20kA Blocking Cap and Gas Tube

RF Surge Protectors Technical Data Sheet

LCSP1022

Features

- Surge current of 20kA
- Max Power 500W
- Frequency range from 125 MHz to 1000 MHz
- N Female to N Female connectors
- VSWR 1.1:1
- Multi-strike capability
- CE & RoHS compliant

Applications

- HF, UHF and VHF radios
- Ham radios
- Remote industrial monitoring

Description

RF surge protector (also known as lightning arrester) LCSP1022 from L-COM utilizing a proprietary surge protection technology protects critical hardware from lightening events while maintaining the RF performance. This RF surge protector component is manufactured in a coaxial in-line design with wide operating frequency range. Optional weather proofing kit and copper cleaning kit are available for purchase separately. All L-COM RF surge protector products are available in stock with same day shipping.

Electrical Specifications

Surge Protector Type DC Handling Blocking Cap and Gas Tube DC Block

Description	Minimum	Typical	Maximum	Units
Frequency Range	125		1,000	MHz
Impedance		50		Ohms
VSWR			1.1:1	
Return Loss			26	dB
Insertion Loss			0.1	dB
Input Power, CW			500	Watts
500W @ 125MHz				
125W @ 1GHz				
Surge Current			20	kAmps
IEC 61000-4-5 80/20us Waveform				
Turn On Voltage		1,200 ±20 %		Volts
Throughput Energy			800	µJ
IEC 61000-4-5 80/20us Waveform				

Mechanical Specifications

Click the following link (or enter part number in "SEARCH" on website) to obtain additional part information including price, inventory and certifications: [Type N F/F In/Out Bulkhead RF Coaxial Surge Protector 125MHz - 1GHz DC Block 500W 20kA Blocking Cap and Gas Tube LCSP1022](#)



Type N F/F In/Out Bulkhead RF Coaxial Surge Protector 125MHz
- 1GHz DC Block 500W 20kA Blocking Cap and Gas Tube

RF Surge Protectors Technical Data Sheet

LCSP1022

Configuration

Input Connector	N Female
Output Connector	N Female

Environmental Specifications

Temperature

Operating Range	-55 to 50 deg C
Storage Range	-55 to +125 deg C

Compliance Certifications (see [product page](#) for current document)

Plotted and Other Data

Notes:

Our portfolio includes cable assemblies, connectors, adapters and custom products, as well as their wireless product line which includes antennas, RF amplifiers, coaxial lightning and surge protectors, and NEMA rated enclosures.

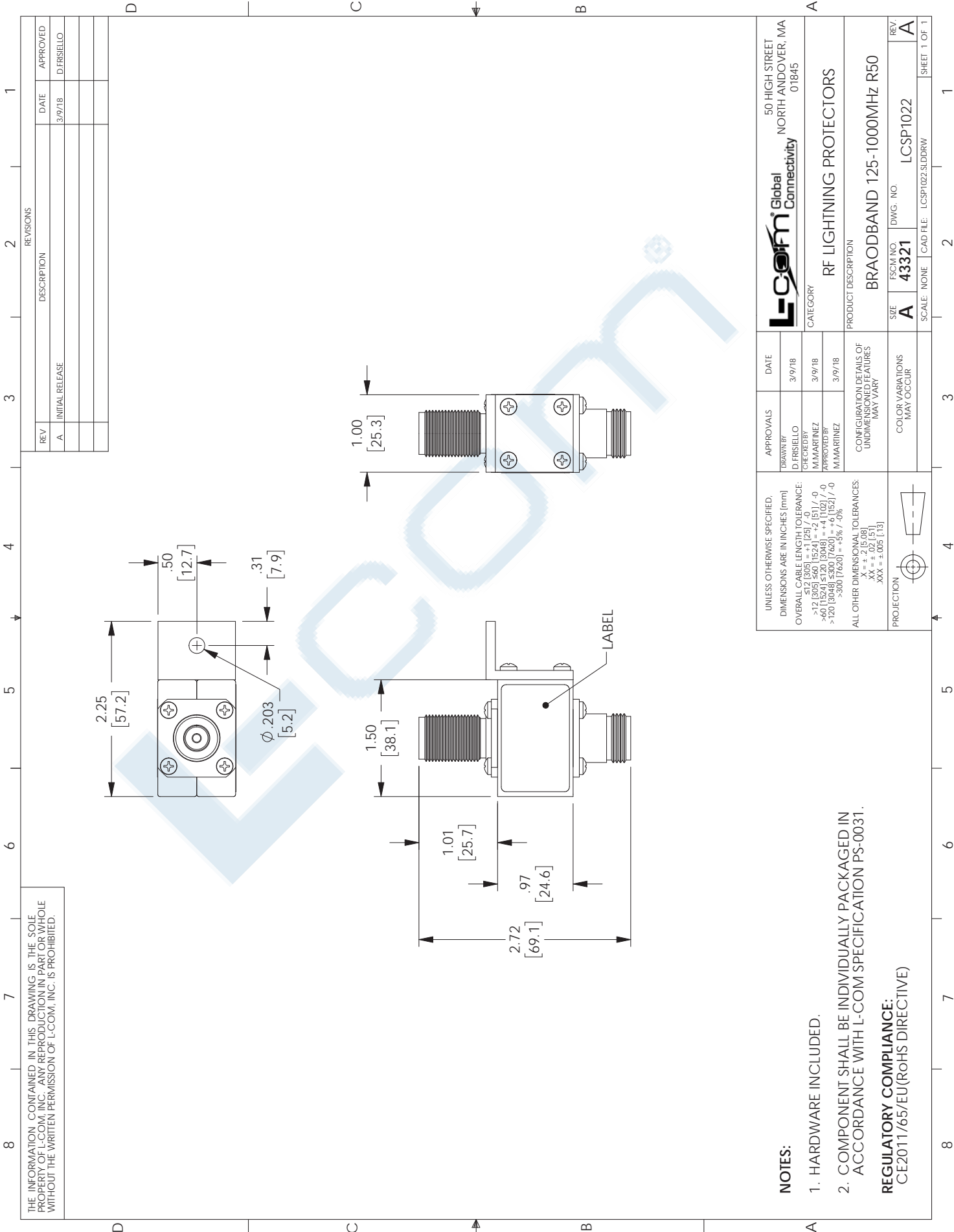
Click the following link (or enter part number in "SEARCH" on website) to obtain additional part information including price, inventory and certifications: [Type N F/F In/Out Bulkhead RF Coaxial Surge Protector 125MHz - 1GHz DC Block 500W 20kA Blocking Cap and Gas Tube LCSP1022](#)

URL:

The information contained in this document is accurate to the best of our knowledge and representative of the part described herein. It may be necessary to make modifications to the part and/or the documentation of the part, in order to implement improvements. L-com reserves the right to make such changes as required. Unless otherwise stated, all specifications are nominal. L-com does not make any representation or warranty regarding the suitability of the part described herein for any particular purpose, and L-com does not assume any liability arising out of the use of any part or documentation.

LCSP1022 CAD Drawing

Type N F/F In/Out Bulkhead RF Coaxial Surge Protector 125MHz -
1GHz DC Block 500W 20kA Blocking Cap and Gas Tube



THE INFORMATION CONTAINED IN THIS DRAWING IS THE SOLE PROPERTY OF L-COM, INC. ANY REPRODUCTION IN PART OR WHOLE WITHOUT THE WRITTEN PERMISSION OF L-COM, INC. IS PROHIBITED.

NOTES:

1. HARDWARE INCLUDED.
 2. COMPONENT SHALL BE INDIVIDUALLY PACKAGED IN ACCORDANCE WITH L-COM SPECIFICATION PS-0031.
- REGULATORY COMPLIANCE:**
CE2011/65/EU (RoHS DIRECTIVE)

REVISIONS		
REV	DESCRIPTION	DATE
A	INITIAL RELEASE	3/9/18

UNLESS OTHERWISE SPECIFIED, DIMENSIONS ARE IN INCHES [mm] OVERBALL CABLE LENGTH TOLERANCE: ≤12 [305] = +1 [25] / -0 >12 [305] ≤60 [1524] = +2 [51] / -0 >60 [1524] ≤120 [3048] = +4 [102] / -0 >120 [3048] ≤762 [19224] = +1 [25] / -0 >762 [19224] ≤300 [7620] = +5% / -0%	APPROVALS	DATE	
	DRAWN BY: D. FRISIELLO CHECKED BY: M. MARINEZ APPROVED BY: M. MARINEZ	3/9/18	
ALL OTHER DIMENSIONAL TOLERANCES: X = ±.005 [0.127] XX = ±.010 [0.254] XXX = ±.015 [0.381]	CONFIGURATION DETAILS OF UNDIMENSIONED FEATURES MAY VARY	3/9/18	RF LIGHTNING PROTECTORS
PROJECTION	COLOR VARIATIONS MAY OCCUR		BROADBAND 125-1000MHZ R50
			SIZE: A
			FSCM NO: 43321
			DWG. NO: LCSP1022
			REV: A
			SCALE: NONE
			CAD FILE: LCSP1022.SLDRW
			SHEET 1 OF 1