



7/16 F/M In/Out Bulkhead RF Coaxial Surge Protector  
 698MHz - 2.7GHz DC Block 500W IP67 40kA  
 Filter Low PIM -155 dBc with Bracket

## RF Surge Protectors Technical Data Sheet

LCSP1007

### Features

- Surge current of 40kA
- Max Power 500W
- Frequency range from 698 MHz to 2.7 GHz
- Waterproof IP67 rated
- 7/16 DIN female connector to 7/16 DIN male connector
- DC Block
- Low PIM
- VSWR <1.1:1
- Low insertion loss
- CE & RoHS compliant

### Applications

- Cellular communication systems
- Public safety systems
- Emergency response systems
- Industrial

### Description

RF surge protector (also known as lightning arrester) LCSP1007 from L-COM utilizing a patented spiral inductor design enables an almost instantaneous response to a lightning surge to protect critical hardware while maintaining the RF performance. This RF surge protector component is manufactured in a coaxial in-line design with wide operating frequency range. All L-COM RF surge protector products are available in stock with same day shipping.

### Electrical Specifications

Surge Protector Type  
 DC Handling

Surge Filter  
 DC Block

Description	Minimum	Typical	Maximum	Units
Frequency Range	0.698		2.7	GHz
Impedance		50		Ohms
VSWR			1.1:1	
Return Loss			26	dB
Insertion Loss			0.1	dB
Passive Intermodulation			-155	dBc
Input Power, CW 500W @ 920MHz 750W @ 50°C			500	Watts
Surge Current IEC 61000-4-5 8/20µs WAVEFORM			40	kAmps
Throughput Energy FOR 3kA@ 8/20µs WAVEFORM			0.01	µJ

Click the following link (or enter part number in "SEARCH" on website) to obtain additional part information including price, inventory and certifications: [7/16 F/M In/Out Bulkhead RF Coaxial Surge Protector 698MHz - 2.7GHz DC Block 500W IP67 40kA Filter Low PIM -155 dBc with Bracket LCSP1007](#)



7/16 F/M In/Out Bulkhead RF Coaxial Surge Protector  
698MHz - 2.7GHz DC Block 500W IP67 40kA  
Filter Low PIM -155 dBc with Bracket

## RF Surge Protectors Technical Data Sheet

LCSP1007

### Mechanical Specifications

#### Configuration

Input Connector  
Output Connector

7/16 DIN Female  
7/16 DIN Male

### Environmental Specifications

#### Temperature

Operating Range  
Ingress Protection (IP) Rating

-50 to 85 deg C  
IP 67

**Compliance Certifications** (see [product page](#) for current document)

### Plotted and Other Data

Notes:

Our portfolio includes cable assemblies, connectors, adapters and custom products, as well as their wireless product line which includes antennas, RF amplifiers, coaxial lightning and surge protectors, and NEMA rated enclosures.

Click the following link (or enter part number in "SEARCH" on website) to obtain additional part information including price, inventory and certifications: [7/16 F/M In/Out Bulkhead RF Coaxial Surge Protector 698MHz - 2.7GHz DC Block 500W IP67 40kA Filter Low PIM -155 dBc with Bracket LCSP1007](#)

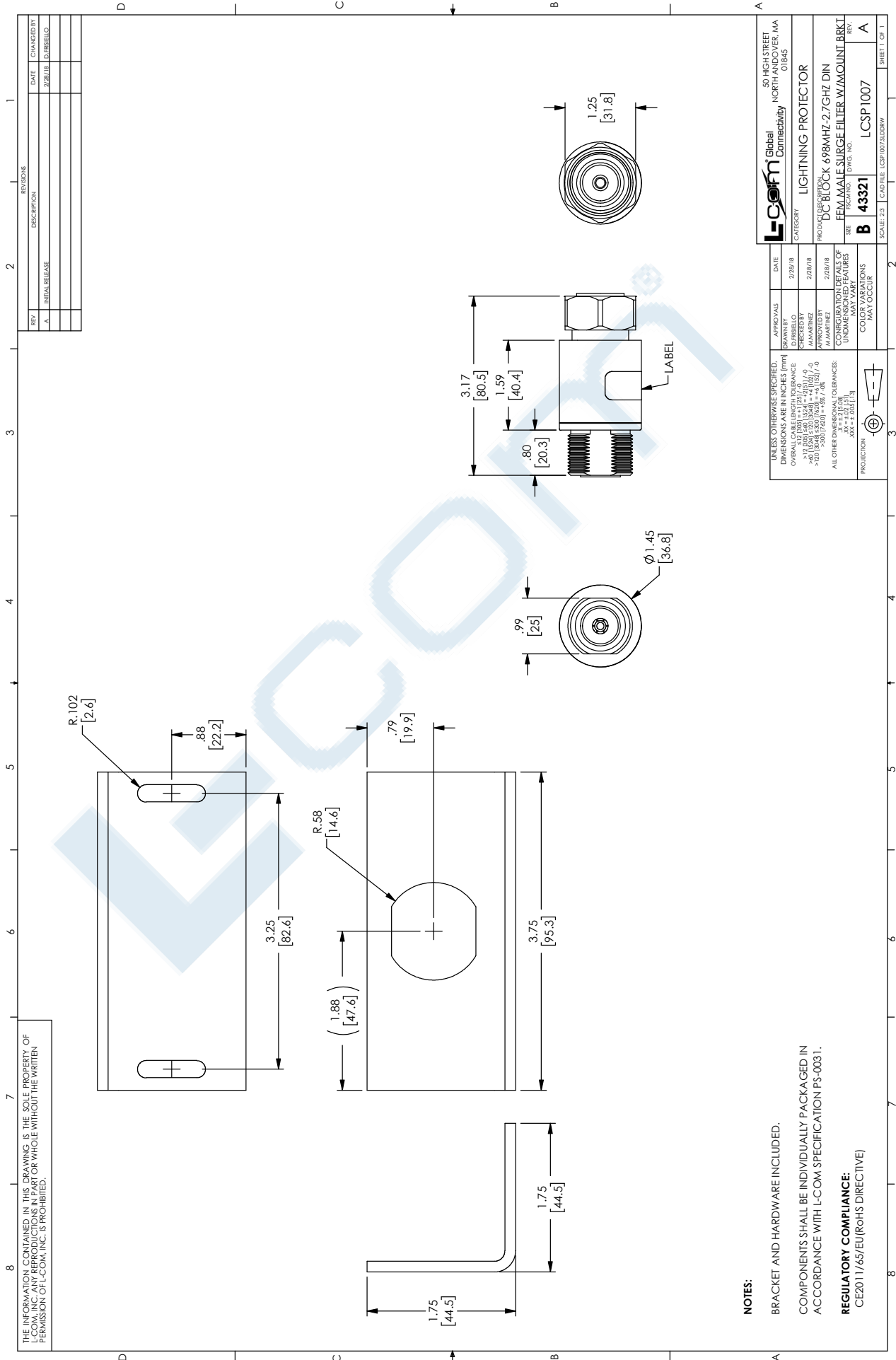
URL:

The information contained in this document is accurate to the best of our knowledge and representative of the part described herein. It may be necessary to make modifications to the part and/or the documentation of the part, in order to implement improvements. L-com reserves the right to make such changes as required. Unless otherwise stated, all specifications are nominal. L-com does not make any representation or warranty regarding the suitability of the part described herein for any particular purpose, and L-com does not assume any liability arising out of the use of any part or documentation.

# LCSP1007 CAD Drawing

7/16 F/M In/Out Bulkhead RF Coaxial Surge Protector 698MHz - 2.7GHz

DC Block 500W IP67 40kA Filter Low PIM -155 dBc with Bracket



REV.	DESCRIPTION	DATE	CHANGED BY
A	INITIAL RELEASE	2/28/18	D. DRISBELO

REVISIONS

		50 HIGH STREET NORTH ANDOVER, MA 01845
DATE	2/28/18	
DRAWN BY	D. DRISBELO	
CHECKED BY	M. MARRETT	
APPROVED BY	M. MARRETT	
DATE	2/28/18	
CONSTRUCTION OF UNDESIGNED FEATURES	MAY VARY	
COLOR VARIATIONS	MAY OCCUR	
SCALE	2:1	CAD FILE: LCSP1007.ASDRAW
SHEET	23	SHEET 1 OF 1

UNLESS OTHERWISE SPECIFIED, DIMENSIONS ARE IN INCHES (MM)	APPROVALS	DATE
OVERALL DIMENSIONS: ±0.005	DRAWN BY	2/28/18
HOLE DIMENSIONS: ±0.005	CHECKED BY	2/28/18
POSITIONAL DIMENSIONS: ±0.005	APPROVED BY	2/28/18
ALL OTHER DIMENSIONAL TOLERANCES: X ±0.005, Y ±0.005, Z ±0.005	DATE	2/28/18
CONSTRUCTION OF UNDESIGNED FEATURES: MAY VARY	CONSTRUCTION OF UNDESIGNED FEATURES	MAY VARY
COLOR VARIATIONS: MAY OCCUR	COLOR VARIATIONS	MAY OCCUR

PRODUCT DESCRIPTION	DC BLOCK 698MHZ-2.7GHZ DIN
SEE FIGURE	DWG. NO.
REV.	A
REV.	A

PROJECTION	





**NOTES:**  
 BRACKET AND HARDWARE INCLUDED.  
 COMPONENTS SHALL BE INDIVIDUALLY PACKAGED IN ACCORDANCE WITH L-COM SPECIFICATION PS-0031.  
**REGULATORY COMPLIANCE:**  
 CE2011/65/EU (RoHS DIRECTIVE)