



Type N F/F In/Out Bulkhead RF Coaxial Surge Protector 2GHz - 6GHz DC Block 10W IP67 10kA Filter

RF Surge Protectors Technical Data Sheet

LCSP1048

Features

- Surge current up to 10kA
- Max Power 10W
- Frequency range from 2GHz to 6GHz
- N-type female connectors
- Waterproof IP67 rated
- DC Block
- VSWR <1.3:1
- Multi-strike capability
- CE & RoHS compliant

Applications

- WiFi
- Cellular communication systems

Description

RF surge protector (also known as lightning arrester) LCSP1048 from L-COM utilizing a patented DC shorted filter design enables an almost instantaneous response to a lightning surge to protect critical hardware while maintaining the RF performance. This RF surge protector component is manufactured in a coaxial in-line design with wide operating frequency range. All L-COM RF surge protector products are available in stock with same day shipping.

Electrical Specifications

Surge Protector Type
DC Handling

Surge Filter
DC Block

Description	Minimum	Typical	Maximum	Units
Frequency Range	2		6	GHz
Impedance		50		Ohms
VSWR		1.2:1	1.3:1	
Return Loss		20		dB
Insertion Loss		0.1	0.2	dB
Input Power, CW			10	Watts
Surge Current IEC 61000-4-5 8/20µs WAVEFORM			10	kAmps
Throughput Energy FOR 3kA @8/20µs WAVEFORM			0.5	µJ

Mechanical Specifications

Configuration

Input Connector
Output Connector

N Female
N Female

Click the following link (or enter part number in "SEARCH" on website) to obtain additional part information including price, inventory and certifications: [Type N F/F In/Out Bulkhead RF Coaxial Surge Protector 2GHz - 6GHz DC Block 10W IP67 10kA Filter LCSP1048](#)



Type N F/F In/Out Bulkhead RF Coaxial Surge Protector
2GHz - 6GHz DC Block 10W IP67 10kA Filter

RF Surge Protectors Technical Data Sheet

LCSP1048

Environmental Specifications

Temperature

Operating Range

-40 to 85 deg C

Ingress Protection (IP) Rating

IP 67

Compliance Certifications (see [product page](#) for current document)

Plotted and Other Data

Notes:

Our portfolio includes cable assemblies, connectors, adapters and custom products, as well as their wireless product line which includes antennas, RF amplifiers, coaxial lightning and surge protectors, and NEMA rated enclosures.

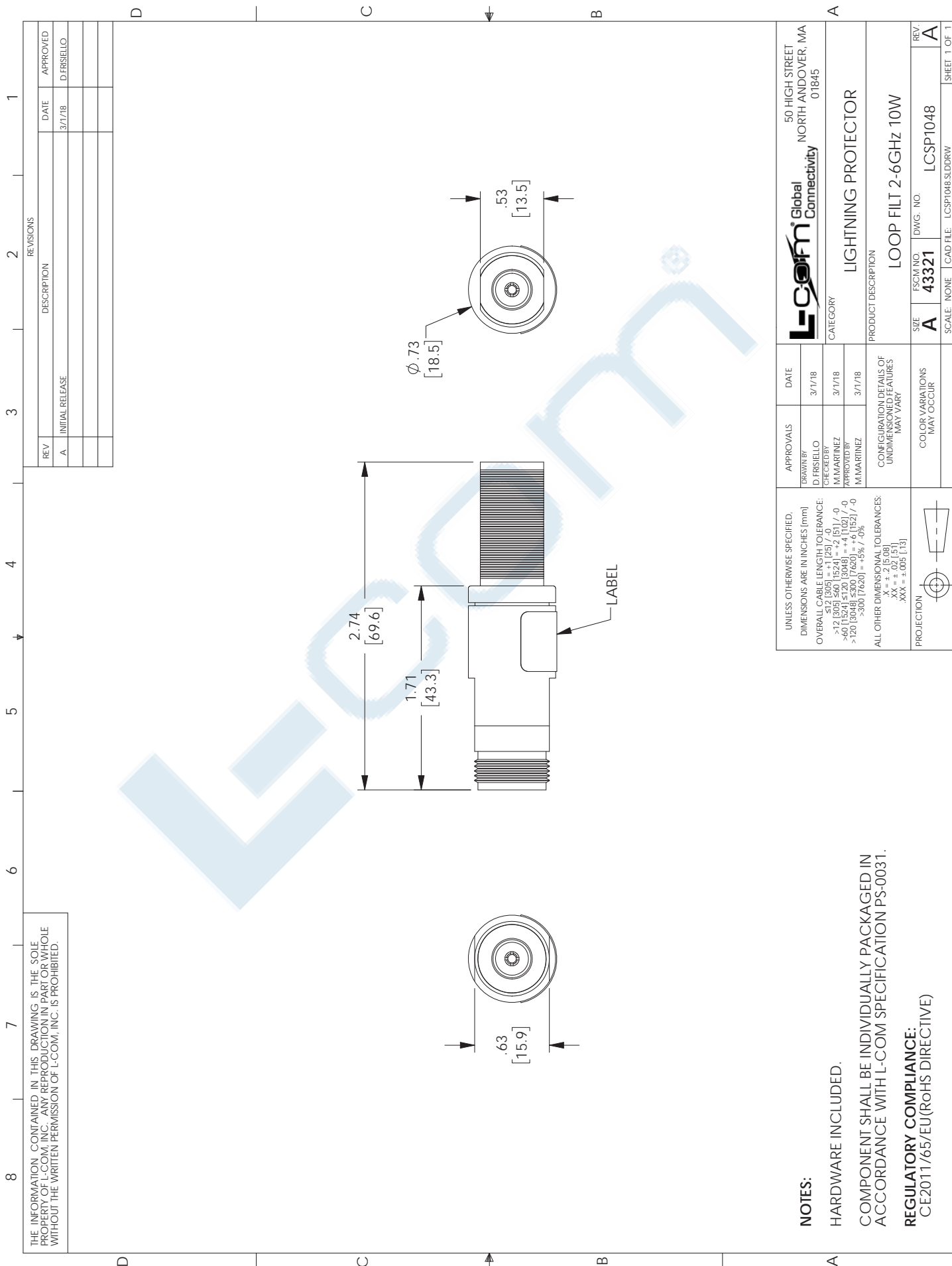
Click the following link (or enter part number in "SEARCH" on website) to obtain additional part information including price, inventory and certifications: [Type N F/F In/Out Bulkhead RF Coaxial Surge Protector 2GHz - 6GHz DC Block 10W IP67 10kA Filter LCSP1048](#)

URL:

The information contained in this document is accurate to the best of our knowledge and representative of the part described herein. It may be necessary to make modifications to the part and/or the documentation of the part, in order to implement improvements. L-com reserves the right to make such changes as required. Unless otherwise stated, all specifications are nominal. L-com does not make any representation or warranty regarding the suitability of the part described herein for any particular purpose, and L-com does not assume any liability arising out of the use of any part or documentation.

LCSP1048 CAD Drawing

Type N F/F In/Out Bulkhead RF Coaxial Surge Protector 2GHz - 6GHz DC Block 10W IP67 10kA Filter



THE INFORMATION CONTAINED IN THIS DRAWING IS THE SOLE PROPERTY OF L-COM, INC. ANY REPRODUCTION IN PART OR WHOLE WITHOUT THE WRITTEN PERMISSION OF L-COM, INC. IS PROHIBITED.

REVISIONS			
REV	DESCRIPTION	DATE	APPROVED
A	INITIAL RELEASE	3/7/18	D.FRISIELLO

UNLESS OTHERWISE SPECIFIED, DIMENSIONS ARE IN INCHES (mm) OVERALL CABLE LENGTH TOLERANCE: ≤12 (305) = +1 (25) / -0 >12 (305) ≤60 (1524) = +2 (51) / -0 >60 (1524) ≤120 (3048) = +4 (102) / -0 >120 (3048) ≤240 (6096) = +8 (203) / -0 >240 (6096) ≤300 (7620) = +5% / -0% ALL OTHER DIMENSIONAL TOLERANCES: X = ±.005 (0.127) XX = ±.010 (0.254) XXX = ±.015 (0.381)	APPROVALS	DATE	
	DRAWN BY: D. FRISIELLO CHECKED BY: M. MARINEZ APPROVED BY: M. MARINEZ	3/7/18	
CONFIGURATION DETAILS OF UNDIMENSIONED FEATURES MAY VARY	CATEGORY		LIGHTNING PROTECTOR LOOP FILT 2-6GHz 10W
COLOR VARIATIONS MAY OCCUR	SIZE	DWG. NO.	
	A	43321	A
	SCALE: NONE	CAD FILE: LCSP1048.SLDTRW	SHEET 1 OF 1

NOTES:
 HARDWARE INCLUDED.
 COMPONENT SHALL BE INDIVIDUALLY PACKAGED IN ACCORDANCE WITH L-COM SPECIFICATION PS-0031.
REGULATORY COMPLIANCE:
 CE2011/65/EU (RoHS DIRECTIVE)