



**7/16 F/M In/Out Bulkhead RF Coaxial Surge Protector 698MHz  
- 2.7GHz DC Pass 1000W IP67 20kA Filter Low PIM -155 dBc**

**RF Surge Protectors Technical Data Sheet**

**LCSP1005**

**Features**

- Surge current of 20kA
- Max Power 1000W
- Frequency range from 698 MHz to 2.7 GHz
- Waterproof IP67 rated
- 7/16 DIN female connector to 7/16 DIN male connector
- DC Pass
- Low PIM
- VSWR <1.2:1
- Low insertion loss
- CE & RoHS compliant

**Applications**

- Cellular communication systems
- Public safety systems
- Emergency response systems
- Industrial

**Description**

RF surge protector (also known as lightning arrester) LCSP1005 from L-COM utilizing a patented spiral inductor design enables an almost instantaneous response to a lightning surge to protect critical hardware while maintaining the RF performance. This RF surge protector component is manufactured in a coaxial in-line design with wide operating frequency range. All L-COM RF surge protector products are available in stock with same day shipping.

**Electrical Specifications**

Surge Protector Type: DC Handling      Surge Filter: DC Pass

Description	Minimum	Typical	Maximum	Units
Frequency Range	0.698		2.7	GHz
Impedance		50		Ohms
VSWR			1.2:1	
Return Loss			20	dB
Insertion Loss			0.1	dB
Passive Intermodulation			-155	dBc
Input Power, CW @ 920 MHz			1	kWatts
Surge Current IEC 61000-4-5 8/20µs WAVEFORM			20	kAmps
Throughput Energy FOR 2kA IEC 61000-4-5 8/20µs WAVEFORM			25,000	µJ

**Mechanical Specifications**

Click the following link (or enter part number in "SEARCH" on website) to obtain additional part information including price, inventory and certifications: [7/16 F/M In/Out Bulkhead RF Coaxial Surge Protector 698MHz - 2.7GHz DC Pass 1000W IP67 20kA Filter Low PIM -155 dBc LCSP1005](#)



7/16 F/M In/Out Bulkhead RF Coaxial Surge Protector 698MHz  
- 2.7GHz DC Pass 1000W IP67 20kA Filter Low PIM -155 dBc

## RF Surge Protectors Technical Data Sheet

LCSP1005

### Configuration

Input Connector	7/16 DIN Female
Output Connector	7/16 DIN Male

### Environmental Specifications

#### Temperature

Operating Range	-50 to 85 deg C
Ingress Protection (IP) Rating	IP 67

**Compliance Certifications** (see [product page](#) for current document)

### Plotted and Other Data

Notes:

Our portfolio includes cable assemblies, connectors, adapters and custom products, as well as their wireless product line which includes antennas, RF amplifiers, coaxial lightning and surge protectors, and NEMA rated enclosures.

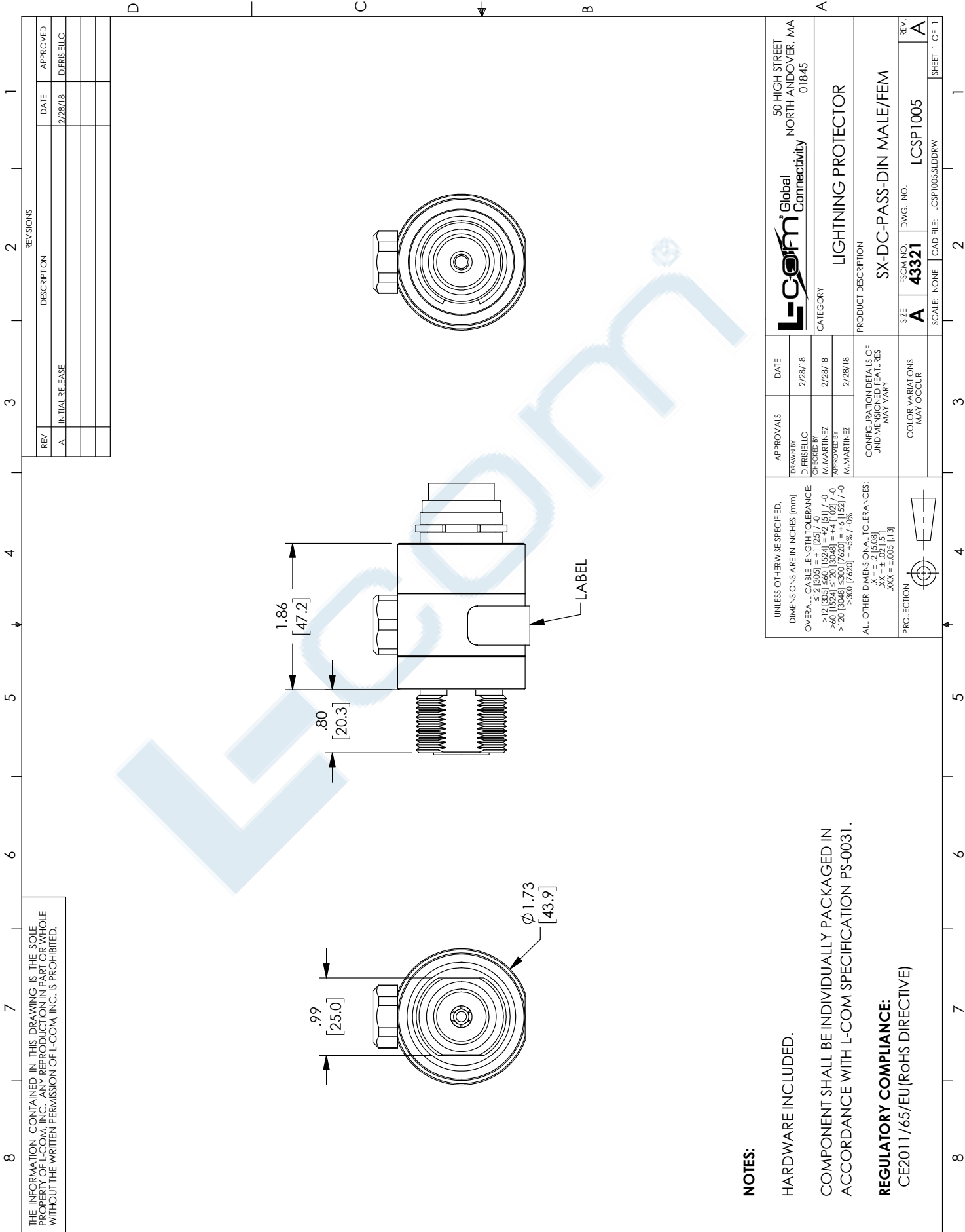
Click the following link (or enter part number in "SEARCH" on website) to obtain additional part information including price, inventory and certifications: [7/16 F/M In/Out Bulkhead RF Coaxial Surge Protector 698MHz - 2.7GHz DC Pass 1000W IP67 20kA Filter Low PIM -155 dBc LCSP1005](#)

URL:

The information contained in this document is accurate to the best of our knowledge and representative of the part described herein. It may be necessary to make modifications to the part and/or the documentation of the part, in order to implement improvements. L-com reserves the right to make such changes as required. Unless otherwise stated, all specifications are nominal. L-com does not make any representation or warranty regarding the suitability of the part described herein for any particular purpose, and L-com does not assume any liability arising out of the use of any part or documentation.

# LCSP1005 CAD Drawing

7/16 F/M In/Out Bulkhead RF Coaxial Surge Protector 698MHz -  
2.7GHz DC Pass 1000W IP67 20kA Filter Low PIM -155 dBc



THE INFORMATION CONTAINED IN THIS DRAWING IS THE SOLE PROPERTY OF L-COM, INC. ANY REPRODUCTION IN PART OR WHOLE WITHOUT THE WRITTEN PERMISSION OF L-COM, INC. IS PROHIBITED.

**NOTES:**

HARDWARE INCLUDED.

COMPONENT SHALL BE INDIVIDUALLY PACKAGED IN ACCORDANCE WITH L-COM SPECIFICATION PS-0031.

**REGULATORY COMPLIANCE:**

CE2011/65/EU (RoHS DIRECTIVE)

REV	DESCRIPTION	DATE	APPROVED
A	INITIAL RELEASE	2/28/18	D.FRISIELLO

UNLESS OTHERWISE SPECIFIED, DIMENSIONS ARE IN INCHES [mm] OVERALL CABLE LENGTH TOLERANCE: ≤12 (305) = +1 (25) / 0 >12 (305) ≤60 (1524) = +2 (51) / 0 >60 (1524) ≤120 (3048) = +4 (102) / 0 >120 (3048) ≤240 (6096) = +8 (203) / 0 >240 (6096) = +8% / 0% ALL OTHER DIMENSIONAL TOLERANCES: X = ±.01 (0.25) Y = ±.005 (0.127) XXX = ±.005 (0.127)	APPROVALS DRAWN BY: D.FRISIELLO CHECKED BY: M.MARTINEZ APPROVED BY: M.MARTINEZ	DATE 2/28/18 2/28/18 2/28/18	L-com® Global Connectivity 50 HIGH STREET NORTH ANDOVER, MA 01845	
	PRODUCT DESCRIPTION LIGHTNING PROTECTOR	CATEGORY SX-DC-PASS-DIN MALE/FEM	CONFIGURATION DETAILS OF UNDIMENSIONED FEATURES MAY VARY	SITE A
	COLOR VARIATIONS MAY OCCUR	FORM NO. 43321	DWG. NO. LCSP1005	REV. A