



## Type N F/F In/Out Bulkhead RF Coaxial Surge Protector 125MHz - 1GHz DC Block 200W 50kA Blocking Cap and Gas Tube

### RF Surge Protectors Technical Data Sheet

LCSP1029

#### Features

- Surge current of 50kA
- Max Power 200W
- Frequency range from 125 MHz to 1000 MHz
- N Female to N Female connectors
- VSWR 1.1:1
- Multi-strike capability
- Nuclear EMP protection
- CE & RoHS compliant

#### Applications

- HF, UHF and VHF radios
- Ham radios
- Remote industrial monitoring

#### Description

RF surge protector (also known as lightning arrester) LCSP1029 from L-COM utilizing a proprietary surge protection technology protects critical hardware from lightening events while maintaining the RF performance. This RF surge protector component is manufactured in a coaxial in-line design with wide operating frequency range. Optional weather proofing kit and copper cleaning kit are available for purchase separately. All L-COM RF surge protector products are available in stock with same day shipping.

#### Electrical Specifications

Surge Protector Type  
DC Handling

Blocking Cap and Gas Tube  
DC Block

Description	Minimum	Typical	Maximum	Units
Frequency Range	125		1,000	MHz
Impedance		50		Ohms
VSWR			1.1:1	
Return Loss			26	dB
Insertion Loss			0.1	dB
Input Power, CW			200	Watts
200W @ 125MHz TO 220MHz				
100W @ 220MHz TO 700MHz				
50W @ 700MHz TO 1000MHz				
Surge Current			50	kAmps
IEC 61000-4-5 8/20µs WAVEFORM				
Turn On Voltage		330 ±20 %		Volts
Throughput Energy			250	µJ

#### Mechanical Specifications

Click the following link (or enter part number in "SEARCH" on website) to obtain additional part information including price, inventory and certifications: [Type N F/F In/Out Bulkhead RF Coaxial Surge Protector 125MHz - 1GHz DC Block 200W 50kA Blocking Cap and Gas Tube LCSP1029](#)



Type N F/F In/Out Bulkhead RF Coaxial Surge Protector 125MHz  
- 1GHz DC Block 200W 50kA Blocking Cap and Gas Tube

RF Surge Protectors Technical Data Sheet

LCSP1029

**Configuration**

Input Connector	N Female
Output Connector	N Female

**Environmental Specifications**

**Temperature**

Operating Range	-50 to 50 deg C
Storage Range	-55 to +85 deg C

**Compliance Certifications** (see [product page](#) for current document)

**Plotted and Other Data**

Notes:

Our portfolio includes cable assemblies, connectors, adapters and custom products, as well as their wireless product line which includes antennas, RF amplifiers, coaxial lightning and surge protectors, and NEMA rated enclosures.

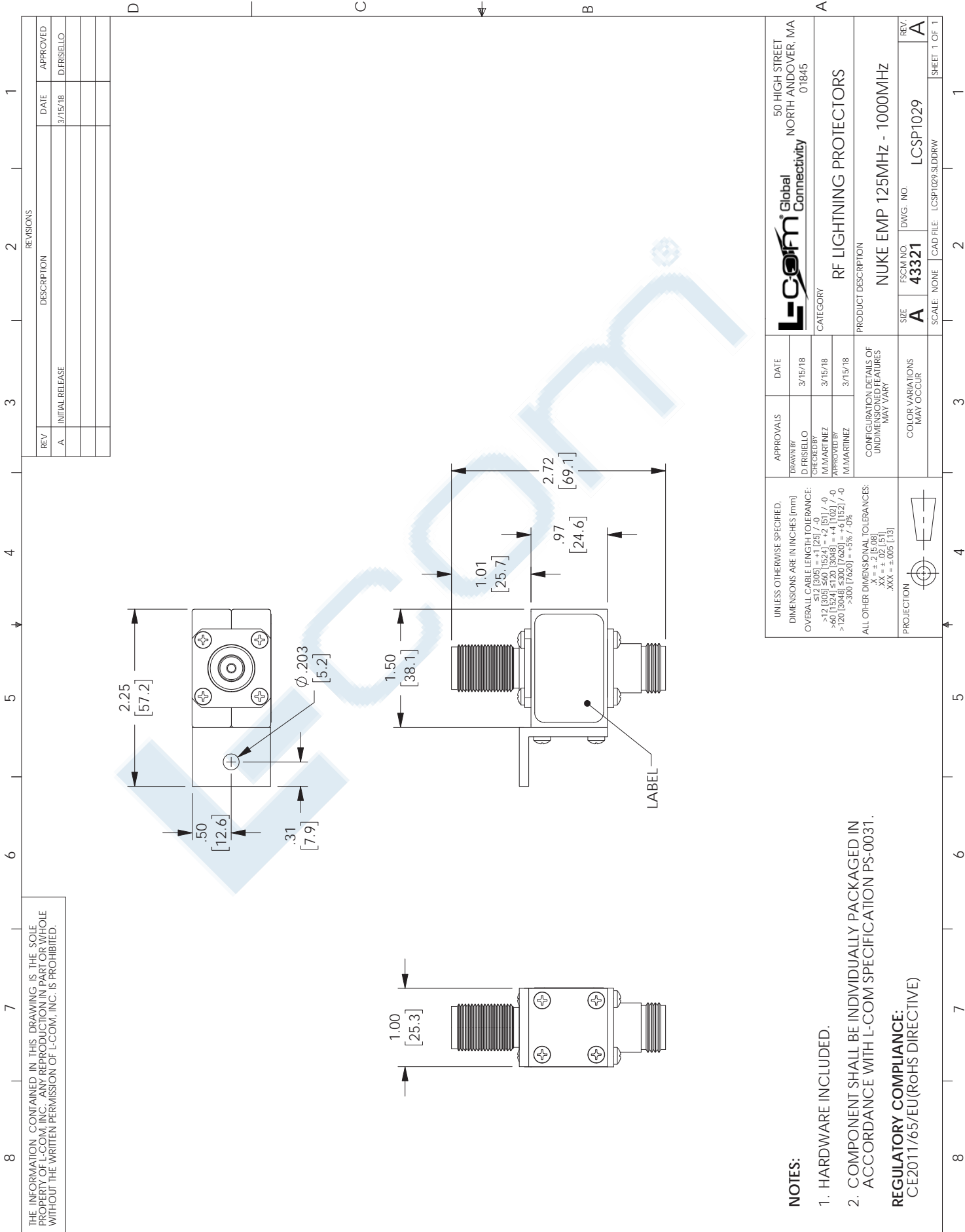
Click the following link (or enter part number in "SEARCH" on website) to obtain additional part information including price, inventory and certifications: [Type N F/F In/Out Bulkhead RF Coaxial Surge Protector 125MHz - 1GHz DC Block 200W 50kA Blocking Cap and Gas Tube LCSP1029](#)

URL:

The information contained in this document is accurate to the best of our knowledge and representative of the part described herein. It may be necessary to make modifications to the part and/or the documentation of the part, in order to implement improvements. L-com reserves the right to make such changes as required. Unless otherwise stated, all specifications are nominal. L-com does not make any representation or warranty regarding the suitability of the part described herein for any particular purpose, and L-com does not assume any liability arising out of the use of any part or documentation.

# LCSP1029 CAD Drawing

Type N F/F In/Out Bulkhead RF Coaxial Surge Protector 125MHz -  
1GHz DC Block 200W 50kA Blocking Cap and Gas Tube



THE INFORMATION CONTAINED IN THIS DRAWING IS THE SOLE PROPERTY OF L-COM, INC. ANY REPRODUCTION IN PART OR WHOLE WITHOUT THE WRITTEN PERMISSION OF L-COM, INC. IS PROHIBITED.

**NOTES:**

1. HARDWARE INCLUDED.
  2. COMPONENT SHALL BE INDIVIDUALLY PACKAGED IN ACCORDANCE WITH L-COM SPECIFICATION PS-0031.
- REGULATORY COMPLIANCE:**  
CE2011/65/EU (RoHS DIRECTIVE)

REVISIONS			
REV	DESCRIPTION	DATE	APPROVED
A	INITIAL RELEASE	3/15/18	D. FRISIELLO

UNLESS OTHERWISE SPECIFIED, DIMENSIONS ARE IN INCHES (mm) OVERBALL CABLE LENGTH TOLERANCE: ≤12 (305) ±.1 (25) / -0 >12 (305) ≤60 (1524) = +.2 (51) / -0 >60 (1524) ≤120 (3048) = +.4 (102) / -0 >120 (3048) ≤240 (6096) = +.8 (203) / -0 >240 (6096) ≤300 (7620) = +.9% / -0% ALL OTHER DIMENSIONAL TOLERANCES: XX = ±.005 (127) X = ±.01 (254) XXX = ±.005 (127)	APPROVALS	DATE	<p>50 HIGH STREET NORTH ANDOVER, MA 01845</p>
	DRAWN BY D. FRISIELLO	3/15/18	
	CHECKED BY M. MARINEZ	3/15/18	
APPROVED BY M. MARINEZ	3/15/18	<p>CATEGORY RF LIGHTNING PROTECTORS</p> <p>PRODUCT DESCRIPTION NUKE EMP 125MHz - 1000MHz</p>	
PROJECTION 	COLOR VARIATIONS MAY OCCUR	SIZE A	<p>FSCM NO 43321</p> <p>DWG. NO. LCSP1029</p>
SCALE: NONE		CAD FILE: LCSP1029.SLDRAW	SHEET 1 OF 1