



7/16 M/F In/Out RF Coaxial Surge Protector
100MHz - 512MHz DC Block 750W IP67 20kA Filter
Low PIM -155 dBc Bracket Toward Body

RF Surge Protectors Technical Data Sheet

LCSP1034

Features

- Surge current of 20kA
- Max Power 750W
- Frequency range from 100 MHz to 512 MHz VHF Band
- 7/16 DIN Male to 7/16 DIN Female connectors
- VSWR 1.1:1
- Waterproof IP67 rated
- DC Block
- Multi-strike capability
- CE & RoHS compliant
- Low PIM

Applications

- Emergency response systems
- Public safety systems

Description

RF surge protector (also known as lightning arrester) LCSP1034 from L-COM utilizing a patented filter surge protection technology acts as a high-band filter shunting surge energy to ground to protect critical hardware while maintaining the RF performance. This RF surge protector component is manufactured in a coaxial in-line design with wide operating frequency range. All L-COM RF surge protector products are available in stock with same day shipping.

Electrical Specifications

Surge Protector Type
DC Handling

Surge Filter
DC Block

Description	Minimum	Typical	Maximum	Units
Frequency Range	100		512	MHz
Impedance		50		Ohms
VSWR			1.1:1	
Return Loss			26	dB
Insertion Loss			0.1	dB
Passive Intermodulation			-155	dBc
Input Power, CW			750	Watts
Surge Current IEC 61000-4-5 8/20µs WAVEFORM			20	kAmps
Throughput Energy FOR 3kA, 8/20µs WAVEFORM			0.5	µJ

Mechanical Specifications

Configuration

Input Connector 7/16 DIN Male

Click the following link (or enter part number in "SEARCH" on website) to obtain additional part information including price, inventory and certifications: [7/16 M/F In/Out RF Coaxial Surge Protector 100MHz - 512MHz DC Block 750W IP67 20kA Filter Low PIM -155 dBc Bracket Toward Body LCSP1034](#)



7/16 M/F In/Out RF Coaxial Surge Protector
100MHz - 512MHz DC Block 750W IP67 20kA Filter
Low PIM -155 dBc Bracket Toward Body

RF Surge Protectors Technical Data Sheet

LCSP1034

Output Connector

7/16 DIN Female

Environmental Specifications

Temperature

Operating Range

-50 to 85 deg C

Ingress Protection (IP) Rating

IP 67

Compliance Certifications (see [product page](#) for current document)

Plotted and Other Data

Notes:

Our portfolio includes cable assemblies, connectors, adapters and custom products, as well as their wireless product line which includes antennas, RF amplifiers, coaxial lightning and surge protectors, and NEMA rated enclosures.

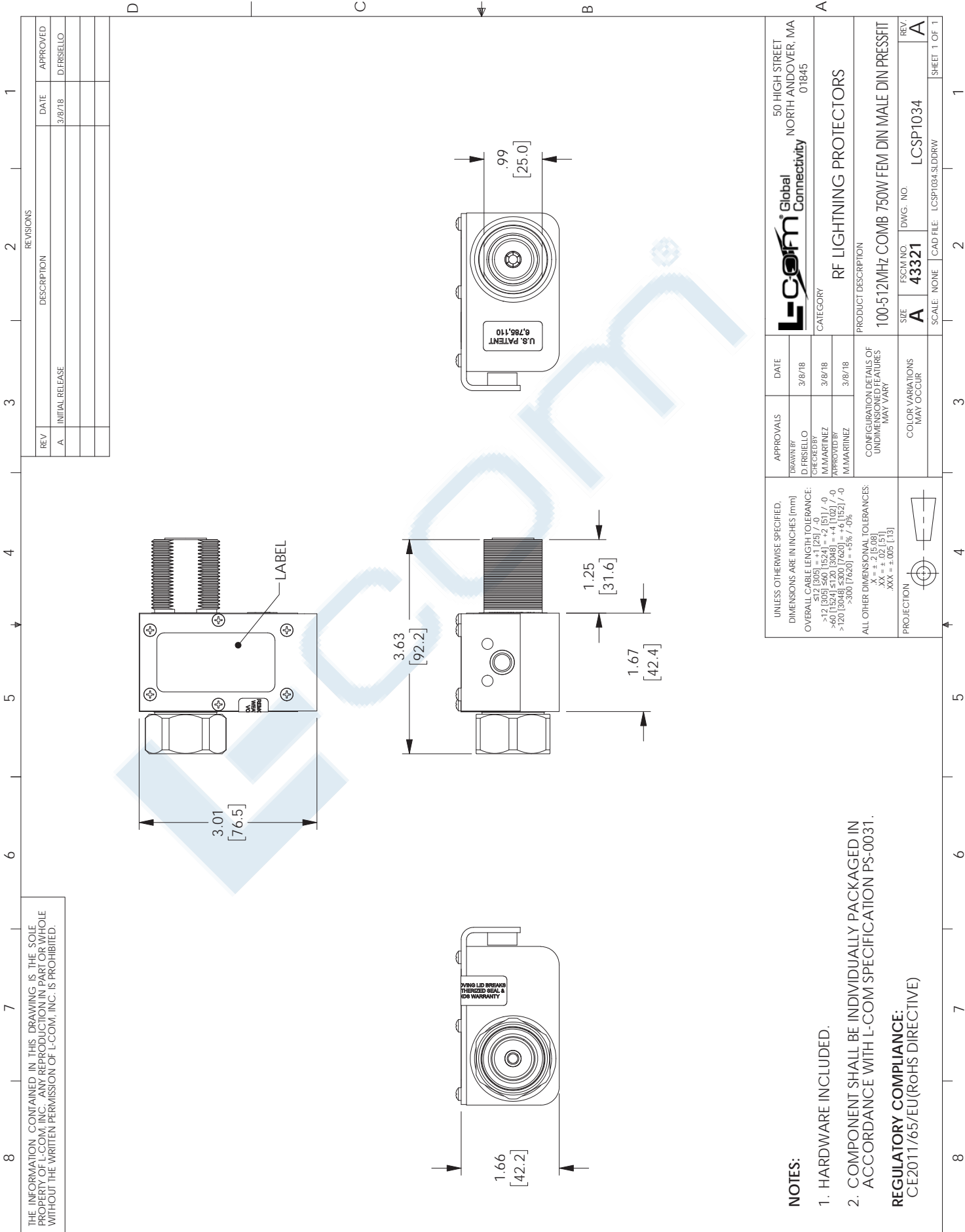
Click the following link (or enter part number in "SEARCH" on website) to obtain additional part information including price, inventory and certifications: [7/16 M/F In/Out RF Coaxial Surge Protector 100MHz - 512MHz DC Block 750W IP67 20kA Filter Low PIM -155 dBc Bracket Toward Body LCSP1034](#)

URL:

The information contained in this document is accurate to the best of our knowledge and representative of the part described herein. It may be necessary to make modifications to the part and/or the documentation of the part, in order to implement improvements. L-com reserves the right to make such changes as required. Unless otherwise stated, all specifications are nominal. L-com does not make any representation or warranty regarding the suitability of the part described herein for any particular purpose, and L-com does not assume any liability arising out of the use of any part or documentation.

LCSP1034 CAD Drawing

7/16 M/F In/Out RF Coaxial Surge Protector 100MHz - 512MHz DC Block
750W IP67 20kA Filter Low PIM -155 dBc Bracket Toward Body



THE INFORMATION CONTAINED IN THIS DRAWING IS THE SOLE PROPERTY OF L-COM, INC. ANY REPRODUCTION IN PART OR WHOLE WITHOUT THE WRITTEN PERMISSION OF L-COM, INC. IS PROHIBITED.

UNLESS OTHERWISE SPECIFIED, DIMENSIONS ARE IN INCHES (mm)		APPROVALS	DATE	L-com Global Connectivity		50 HIGH STREET NORTH ANDOVER, MA 01845
OVERBALL CABLE LENGTH TOLERANCE:		DRAWN BY D. FRISIELLO	3/8/18	RF LIGHTNING PROTECTORS		
$\le 12 [305] = +1.25 [31.6] / -0$		CHECKED BY MAMARINEZ	3/8/18	PRODUCT DESCRIPTION		
$> 12 [305] 560 [1524] = +2.15 [54.7] / -0$		APPROVED BY MAMARINEZ	3/8/18	100-512MHZ COMB 750W FEM DIN MALE DIN PRESSFIT		
$> 60 [1524] 5120 [3048] = +4.1 [102] / -0$		CONFIGURATION DETAILS OF UNDIMENSIONED FEATURES MAY VARY		SIZE	FSCM NO	REV
$> 120 [3048] 7620 [4915] = +4.1 [102] / -0$		COLOR VARIATIONS MAY OCCUR		A	43321	A
$> 300 [7620] = -5% / +0%$		ALL OTHER DIMENSIONAL TOLERANCES:		SCALE	NONE	SHEET 1 OF 1
X = $\pm .005 [127]$		PROJECTION		CAD FILE	LCSP1034.SLDDRW	
XXX = $\pm .005 [127]$		[Symbol]		DWG. NO.	LCSP1034	

- NOTES:**
1. HARDWARE INCLUDED.
 2. COMPONENT SHALL BE INDIVIDUALLY PACKAGED IN ACCORDANCE WITH L-COM SPECIFICATION PS-0031.
- REGULATORY COMPLIANCE:**
CE2011/65/EU (RoHS DIRECTIVE)