



Type N F/M In/Out Bulkhead RF Coaxial Surge Protector DC - 7GHz DC Pass 90W IP67 20kA Gas Discharge Tube BiDirect

RF Surge Protectors Technical Data Sheet

LCSP1041

Features

- Surge current of 20kA
- Max Power 90W(RMS)
- Frequency range from DC to 7GHz
- N-type female connector to N-type male connector
- Waterproof IP67 rated
- DC Pass
- VSWR 1.4 typ
- CE & RoHS compliant
- Bi-Directional

Applications

- WiFi
- GPS
- Land mobile radio

Description

RF surge protector (also known as lightning arrester) LCSP1041 from L-COM utilizing a proprietary gas tube surge protection technology protects critical hardware from lightening events while maintaining the RF performance. This RF surge protector component is manufactured in a coaxial in-line design with wide operating frequency range. All L-COM RF surge protector products are available in stock with same day shipping.

Electrical Specifications

Surge Protector Type
DC Handling

Gas Discharge Tube
DC Pass

Description	Minimum	Typical	Maximum	Units
Frequency Range	DC		7	GHz
Impedance		50		Ohms
VSWR		1.4:1		
Return Loss		15		dB
Insertion Loss		0.35		dB
Input Power, CW			90	Watts
90W @ 30MHz				
9W @ 3GHz				
Surge Current			20	kAmps
@ IEC 61000-4-5 8/20µs WAVEFORM				
Turn On Voltage		150		Volts

Click the following link (or enter part number in "SEARCH" on website) to obtain additional part information including price, inventory and certifications: [Type N F/M In/Out Bulkhead RF Coaxial Surge Protector DC - 7GHz DC Pass 90W IP67 20kA Gas Discharge Tube BiDirect LCSP1041](#)



Type N F/M In/Out Bulkhead RF Coaxial Surge Protector DC - 7GHz DC Pass 90W IP67 20kA Gas Discharge Tube BiDirect

RF Surge Protectors Technical Data Sheet

LCSP1041

Specifications by Frequency

Description	F1	F2	F3	F4	F5	Units
Frequency Range	DC to 3	3 to 4	4 to 6.5	6.5 to 7		GHz
VSWR, Max	1.1:1	1.2:1	1.4:1	1.6:1		
Insertion Loss, Max	0.1	0.25	0.35	0.6		dB

Mechanical Specifications

Configuration

Input Connector
Output Connector

N Female
N Male

Environmental Specifications

Temperature

Operating Range

-55 to 85 deg C

Ingress Protection (IP) Rating

IP 67

Compliance Certifications (see [product page](#) for current document)

Plotted and Other Data

Notes:

Our portfolio includes cable assemblies, connectors, adapters and custom products, as well as their wireless product line which includes antennas, RF amplifiers, coaxial lightning and surge protectors, and NEMA rated enclosures.

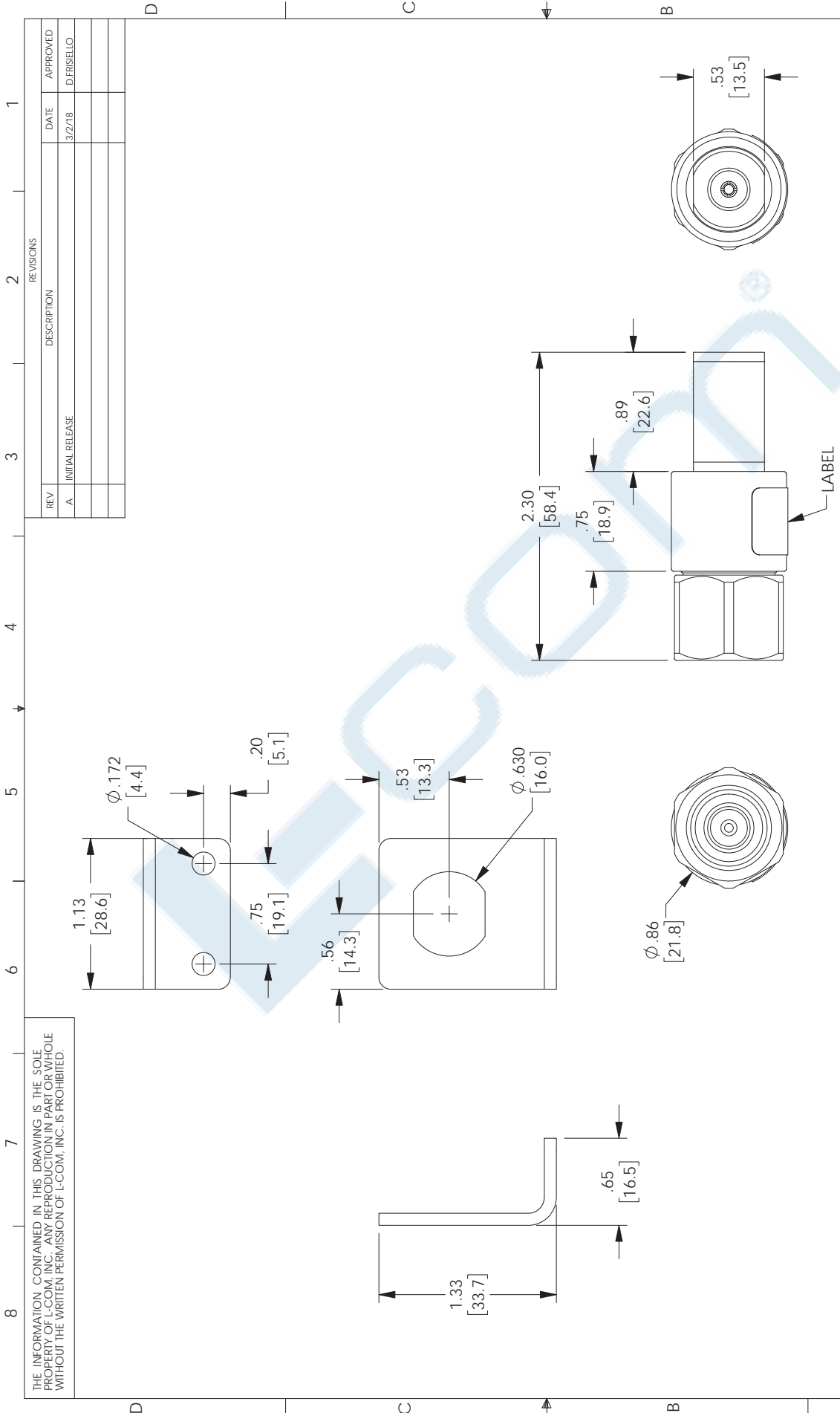
Click the following link (or enter part number in "SEARCH" on website) to obtain additional part information including price, inventory and certifications: [Type N F/M In/Out Bulkhead RF Coaxial Surge Protector DC - 7GHz DC Pass 90W IP67 20kA Gas Discharge Tube BiDirect LCSP1041](#)

URL:

The information contained in this document is accurate to the best of our knowledge and representative of the part described herein. It may be necessary to make modifications to the part and/or the documentation of the part, in order to implement improvements. L-com reserves the right to make such changes as required. Unless otherwise stated, all specifications are nominal. L-com does not make any representation or warranty regarding the suitability of the part described herein for any particular purpose, and L-com does not assume any liability arising out of the use of any part or documentation.

LCSP1041 CAD Drawing

Type N F/M In/Out Bulkhead RF Coaxial Surge Protector DC - 7GHz
DC Pass 90W IP67 20kA Gas Discharge Tube BiDirect



THE INFORMATION CONTAINED IN THIS DRAWING IS THE SOLE PROPERTY OF L-COM, INC. ANY REPRODUCTION IN PART OR WHOLE WITHOUT THE WRITTEN PERMISSION OF L-COM, INC. IS PROHIBITED.

REV	INITIAL RELEASE	DATE	APPROVED
A		3/2/18	D.FRISIELLO

REV	DESCRIPTION	DATE	APPROVED

APPROVALS	DATE
D. FRISIELLO	3/2/18
M. MARINEZ	3/2/18
M. MARINEZ	3/2/18

UNLESS OTHERWISE SPECIFIED:	APPROVALS	DATE	50 HIGH STREET
DIMENSIONS ARE IN INCHES (mm)	D. FRISIELLO	3/2/18	NORTH ANDOVER, MA
OVERBALL CABLE LENGTH TOLERANCE:	CHECKED BY		01845
≤12 (305) = +1 (25) / -0	M. MARINEZ		
>12 (305) ≤60 (1524) = +2 (51) / -0	APPROVED BY		
>60 (1524) ≤120 (3048) = +4 (102) / -0	M. MARINEZ		
>120 (3048) ≤240 (6096) = +8 (203) / -0			
>240 (6096) ≤300 (7620) = -5% / +0%			
ALL OTHER DIMENSIONAL TOLERANCES:	CONFIGURATION DETAILS OF UNDIMENSIONED FEATURES MAY VARY		
XX = ±.001 [0.025]			
XXX = ±.005 [0.127]			

PROJECTION	COLOR VARIATIONS	SIZE	FSCM NO.	DWG. NO.	REV.
	MAY OCCUR	A	43321	LCSP1041	A

SCALE	CAD FILE	LCSP1041.SLDDRW	SHEET 1 OF 1
NONE			

NOTES:
BRACKET AND HARDWARE INCLUDED.
COMPONENTS SHALL BE INDIVIDUALLY PACKAGED IN ACCORDANCE WITH L-COM SPECIFICATION PS-0031.
REGULATORY COMPLIANCE:
CE2011/65/EU (RoHS DIRECTIVE)