



Type N F/M In/Out Bulkhead RF Coaxial Surge Protector 698MHz  
- 2.7GHz DC Block 500W IP67 40kA Filter BiDirect with Bracket

**RF Surge Protectors Technical Data Sheet**

**LCSP1002**

**Features**

- Surge current of 40kA
- Max Power 500W
- Frequency range from 698 MHz to 2.7 GHz
- Waterproof IP67 rated
- N-type female connector to N-type male connector
- DC Block
- VSWR <1.1:1
- Low insertion loss
- CE & RoHS compliant
- Bi-Directional

**Applications**

- Cellular communication systems
- Public safety systems
- Emergency response systems
- Industrial

**Description**

RF surge protector (also known as lightning arrester) LCSP1002 from L-COM utilizing a patented spiral inductor design enables an almost instantaneous response to a lightning surge to protect critical hardware while maintaining the RF performance. This RF surge protector component is manufactured in a coaxial in-line design with wide operating frequency range. All L-COM RF surge protector products are available in stock with same day shipping.

**Electrical Specifications**

Surge Protector Type  
DC Handling

Surge Filter  
DC Block

Description	Minimum	Typical	Maximum	Units
Frequency Range	0.698		2.7	GHz
Impedance		50		Ohms
VSWR			1.1:1	
Return Loss			26	dB
Insertion Loss			0.1	dB
Input Power, CW			500	Watts
500W @ 920MHz				
750W @ 50°C				
Surge Current			40	kAmps
IEC 61000-4-5 8/20µs WAVEFORM				
Throughput Energy			0.01	µJ
FOR 3kA @ 8/20µs WAVEFORM				

**Mechanical Specifications**

Click the following link (or enter part number in "SEARCH" on website) to obtain additional part information including price, inventory and certifications: [Type N F/M In/Out Bulkhead RF Coaxial Surge Protector 698MHz - 2.7GHz DC Block 500W IP67 40kA Filter BiDirect with Bracket LCSP1002](#)



Type N F/M In/Out Bulkhead RF Coaxial Surge Protector 698MHz  
- 2.7GHz DC Block 500W IP67 40kA Filter BiDirect with Bracket

RF Surge Protectors Technical Data Sheet

LCSP1002

**Configuration**

Input Connector	N Female
Output Connector	N Male

**Environmental Specifications**

**Temperature**

Operating Range	-50 to 85 deg C
Ingress Protection (IP) Rating	IP 67

**Compliance Certifications** (see [product page](#) for current document)

**Plotted and Other Data**

Notes:

Our portfolio includes cable assemblies, connectors, adapters and custom products, as well as their wireless product line which includes antennas, RF amplifiers, coaxial lightning and surge protectors, and NEMA rated enclosures.

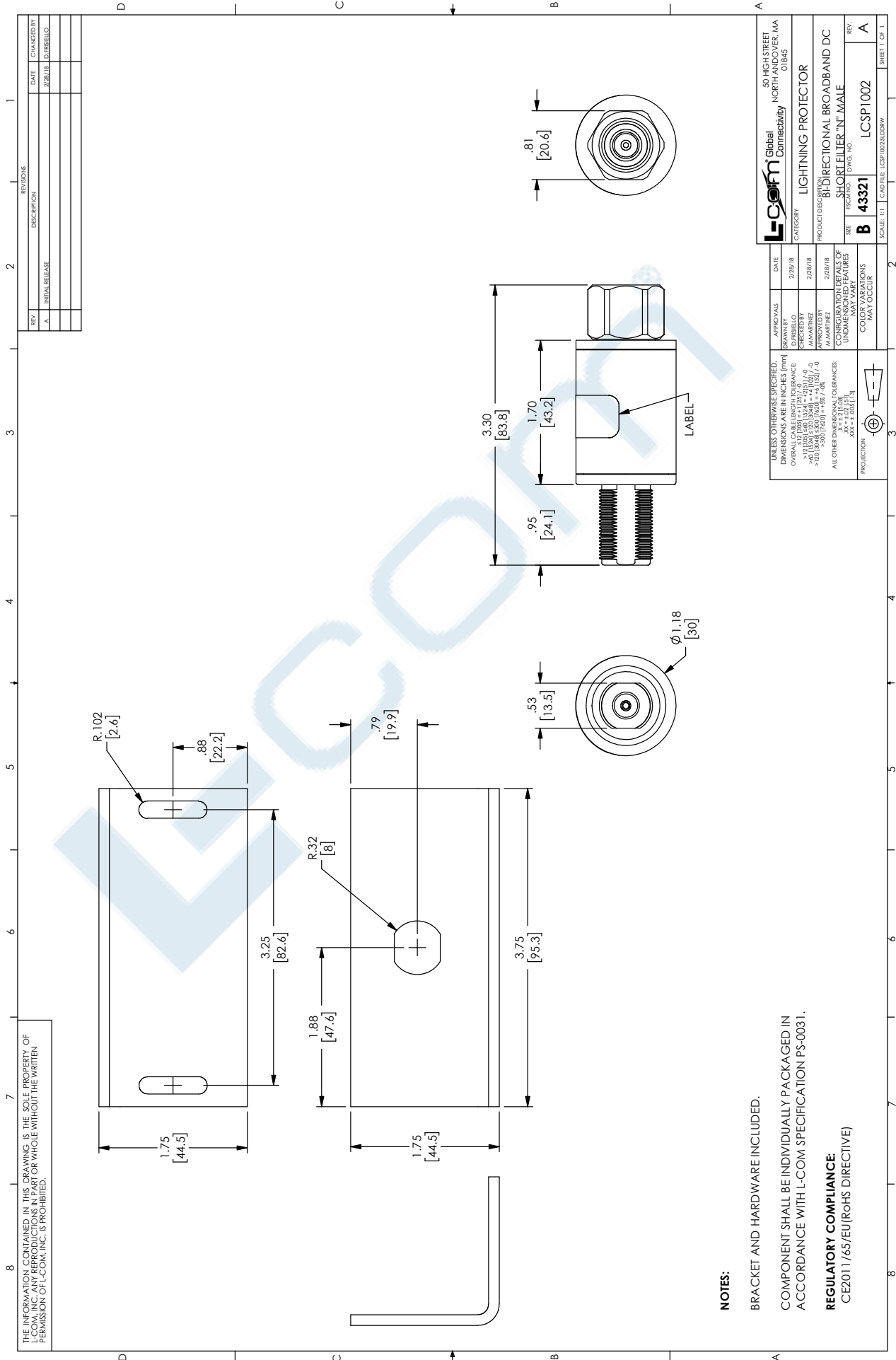
Click the following link (or enter part number in "SEARCH" on website) to obtain additional part information including price, inventory and certifications: [Type N F/M In/Out Bulkhead RF Coaxial Surge Protector 698MHz - 2.7GHz DC Block 500W IP67 40kA Filter BiDirect with Bracket LCSP1002](#)

URL:

The information contained in this document is accurate to the best of our knowledge and representative of the part described herein. It may be necessary to make modifications to the part and/or the documentation of the part, in order to implement improvements. L-com reserves the right to make such changes as required. Unless otherwise stated, all specifications are nominal. L-com does not make any representation or warranty regarding the suitability of the part described herein for any particular purpose, and L-com does not assume any liability arising out of the use of any part or documentation.

# LCSPI002 CAD Drawing

Type N F/M In/Out Bulkhead RF Coaxial Surge Protector 698MHz - 2.7GHz DC Block 500W IP67 40kA Filter BiDirect with Bracket



REV.	INITIAL RELEASE	DESCRIPTION	REVISIONS	DATE	CHANGED BY
A				2/28/18	D. RISSELO

		50 HIGH STREET NORTH ANDOVER, MA 01845	
APPROVALS	DATE	APPROVALS	DATE
DRAWN BY D. RISSELO	2/28/18	APPROVED BY D. RISSELO	2/28/18
DESIGNED BY M. MARTEZ	2/28/18	APPROVED BY M. MARTEZ	2/28/18
PRODUCT DESCRIPTION LIGHTNING PROTECTOR		CONNECTIONS/TERMINALS OF UNDESIGNATED PARTS MAY VARY	
SEE FIGURE 1 DWG. NO.		COLOR VARIATIONS MAY OCCUR	
REV.	A	SCALE: 1:1	SHEET 1 OF 1
REV.	A	SCALE: 1:1	SHEET 1 OF 1

**NOTES:**  
 BRACKET AND HARDWARE INCLUDED.  
 COMPONENT SHALL BE INDIVIDUALLY PACKAGED IN ACCORDANCE WITH L-COM SPECIFICATION PS-0031.  
**REGULATORY COMPLIANCE:**  
 CE2011/65/EU(RoHS DIRECTIVE)