



Type N F/M In/Out Bulkhead RF Coaxial Surge Protector 698MHz - 2.7GHz DC Block 500W IP67 40kA Filter BiDirect Low PIM -155 dBc

RF Surge Protectors Technical Data Sheet

LCSP1003

Features

- Surge current of 40kA
- Max Power 500W
- Frequency range from 698 MHz to 2.7 GHz
- Waterproof IP67 rated
- N-type female connector to N-type male connector
- DC Block
- Low PIM
- VSWR <1.1:1
- Low insertion loss
- CE & RoHS compliant
- Bi-Directional

Applications

- Cellular communication systems
- Emergency response systems
- Public safety systems
- Industrial

Description

RF surge protector (also known as lightning arrester) LCSP1003 from L-COM utilizing a patented spiral inductor design enables an almost instantaneous response to a lightning surge to protect critical hardware while maintaining the RF performance. This RF surge protector component is manufactured in a coaxial in-line design with wide operating frequency range. All L-COM RF surge protector products are available in stock with same day shipping.

Electrical Specifications

Surge Protector Type
DC Handling

Surge Filter
DC Block

| Description | Minimum | Typical | Maximum | Units |
|---|---------|---------|---------|-------|
| Frequency Range | 0.698 | | 2.7 | GHz |
| Impedance | | 50 | | Ohms |
| VSWR | | | 1.1:1 | |
| Return Loss | | | 26 | dB |
| Insertion Loss | | | 0.1 | dB |
| Passive Intermodulation | | | -155 | dBc |
| Input Power, CW 500W @ 920MHz 750W @ 50°C | | | 500 | Watts |
| Surge Current IEC 61000-4-5 8/20µs WAVEFORM | | | 40 | kAmps |
| Throughput Energy FOR 3kA @ 8/20µs WAVEFORM | | | 0.01 | µJ |

Click the following link (or enter part number in "SEARCH" on website) to obtain additional part information including price, inventory and certifications: [Type N F/M In/Out Bulkhead RF Coaxial Surge Protector 698MHz - 2.7GHz DC Block 500W IP67 40kA Filter BiDirect Low PIM -155 dBc LCSP1003](#)



Type N F/M In/Out Bulkhead RF Coaxial Surge
Protector 698MHz - 2.7GHz DC Block 500W
IP67 40kA Filter BiDirect Low PIM -155 dBc

RF Surge Protectors Technical Data Sheet

LCSP1003

Mechanical Specifications

Configuration

Input Connector
Output Connector

N Female
N Male

Environmental Specifications

Temperature

Operating Range
Ingress Protection (IP) Rating

-50 to 85 deg C
IP 67

Compliance Certifications (see [product page](#) for current document)

Plotted and Other Data

Notes:

Our portfolio includes cable assemblies, connectors, adapters and custom products, as well as their wireless product line which includes antennas, RF amplifiers, coaxial lightning and surge protectors, and NEMA rated enclosures.

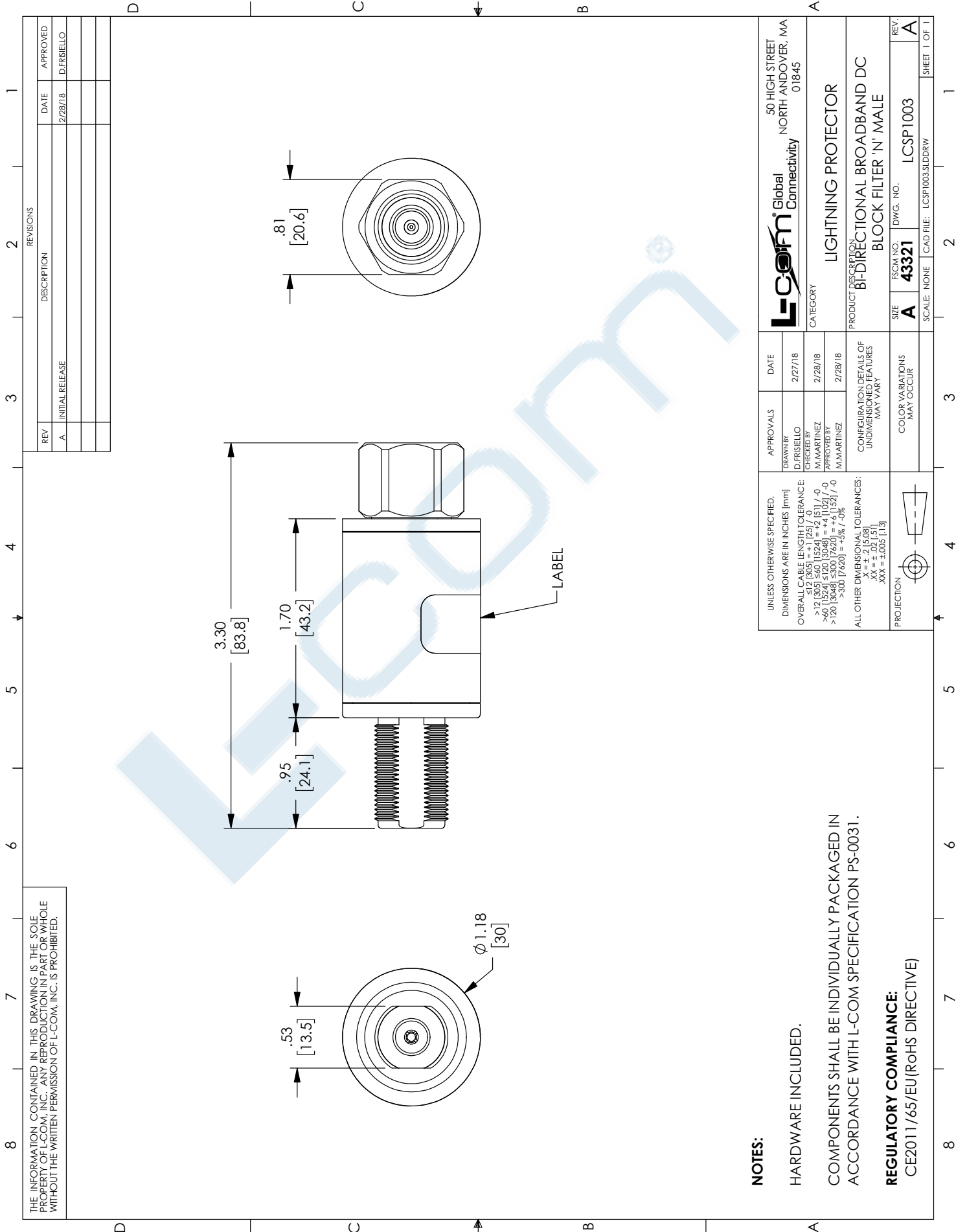
Click the following link (or enter part number in "SEARCH" on website) to obtain additional part information including price, inventory and certifications: [Type N F/M In/Out Bulkhead RF Coaxial Surge Protector 698MHz - 2.7GHz DC Block 500W IP67 40kA Filter BiDirect Low PIM -155 dBc LCSP1003](#)

URL:

The information contained in this document is accurate to the best of our knowledge and representative of the part described herein. It may be necessary to make modifications to the part and/or the documentation of the part, in order to implement improvements. L-com reserves the right to make such changes as required. Unless otherwise stated, all specifications are nominal. L-com does not make any representation or warranty regarding the suitability of the part described herein for any particular purpose, and L-com does not assume any liability arising out of the use of any part or documentation.

LCSP1003 CAD Drawing

Type N F/M In/Out Bulkhead RF Coaxial Surge Protector 698MHz - 2.7GHz
DC Block 500W IP67 40kA Filter BiDirect Low PIM -155 dBc



THE INFORMATION CONTAINED IN THIS DRAWING IS THE SOLE PROPERTY OF L-COM, INC. ANY REPRODUCTION IN PART OR WHOLE WITHOUT THE WRITTEN PERMISSION OF L-COM, INC. IS PROHIBITED.

| REV | DESCRIPTION | DATE | APPROVED |
|-----|-----------------|---------|-------------|
| A | INITIAL RELEASE | 2/28/18 | D.FRISIELLO |
| | | | |
| | | | |

| | | | |
|--|--|-------------------|---|
| UNLESS OTHERWISE SPECIFIED, DIMENSIONS ARE IN INCHES [mm] OVERALL CABLE LENGTH TOLERANCE: $\le 12 (305) \le +1 (25) / 0$ >12 (305) $\le 60 (1524) = +2 (51) / -0$ >60 (1524) $\le 120 (3048) = +4 (102) / -0$ >120 (3048) $\le 240 (6096) = +6 (152) / -0$ >240 (6096) $\le +3\% / -0\%$ ALL OTHER DIMENSIONAL TOLERANCES: $X = \pm .008 (0.203)$ $Y = \pm .01 (0.254)$ $XXX = \pm .005 (0.127)$ | APPROVALS | DATE | L-Com Global Connectivity 50 HIGH STREET NORTH ANDOVER, MA 01845 |
| | DRAWN BY D.FRISIELLO | 2/27/18 | |
| | CHECKED BY M.MARTINEZ | 2/28/18 | CATEGORY LIGHTNING PROTECTOR |
| | APPROVED BY M.MARTINEZ | 2/28/18 | |
| | CONFIGURATION DETAILS OF UNDIMENSIONED FEATURES MAY VARY | | PRODUCT DESCRIPTION BI-DIRECTIONAL BROADBAND DC BLOCK FILTER 'N' MALE |
| | COLOR VARIATIONS MAY OCCUR | SIZE A | REV. A |
| | | FORM NO. 43321 | DWG. NO. LCSP1003 |
| | | SCALE: NONE | CAD FILE: LCSP1003.SLDDRW |

NOTES:
HARDWARE INCLUDED.
COMPONENTS SHALL BE INDIVIDUALLY PACKAGED IN ACCORDANCE WITH L-COM SPECIFICATION PS-0031.
REGULATORY COMPLIANCE:
CE2011/65/EU (RoHS DIRECTIVE)