

Specifications

Output

socket:	Standard USB, type A, female	
voltage:	5 V DC $\pm 5\%$	
max. current:	1.5 A	continuous
auto cut off:	≤ 70 mA	(if the output current is lower than approx. 70mA, the output will be switched off automatically)
safety functions:	protection against external short circuit, overload and deep discharge	

Input

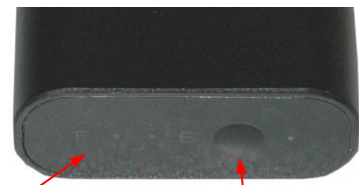
socket:	Micro USB, female
voltage:	5 V DC $\pm 5\%$
charge current:	800...1600 mA
charge time:	2.25...2.75 h

Indicators

charge/battery status:	5 LEDs (blue)	show the charge state of the internal battery in 20% steps - while charge is in progress - when pressing the charge state test button
charge end:		all 5 LEDs light permanently when the internal battery is fully charged

Internal Battery

cell type:	LiCoO ₂	Lithium Polymer
size:	customized	(prismatic cells)
number of cells:	2	
configuration:	1S2P	
nominal voltage:	3.7 V	
capacity:	2600 mAh	(2 x 1300mAh) $\pm 10\%$
energy:	9.6 Wh	
life time expectance: (C>60% of min. capacity)	≥ 500 cycles	



battery status indicator LEDs test button

Temperature range

operating temperature:	- 10...50 °C	
storage temperature:	- 20...40 °C	
	0...25 °C	recommended

Mechanical specifications

length L1:	59 ± 2 mm
width W1:	50 ± 1 mm
height H1:	22 ± 1 mm
weight (device only):	105 ± 10 g



Housing

material:	aluminum, anodized
colour:	black

Accessories:

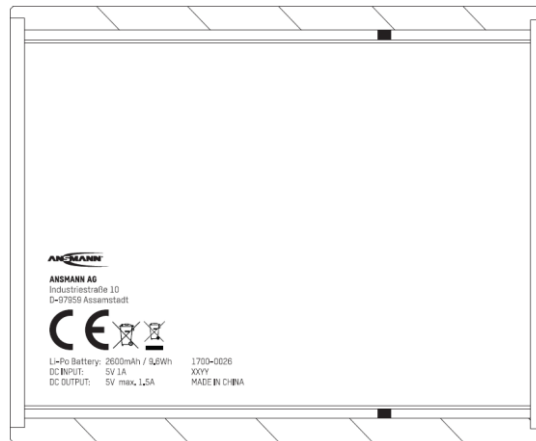
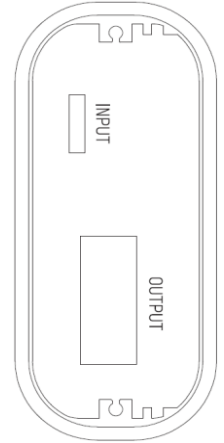
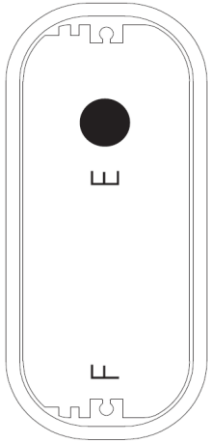
micro USB to USB cable




cable length: 550mm
colour: black

	ANSMANN Specifications for model:	ANSMANN Powerbank Model 2.6 (2600mAh)
	data sheet no. / part no.	1700-0026
	supplier no.	703572
	author / date	TG / 30.04.2015

Printing:



	ANSMANN Specifications for model:	ANSMANN Powerbank Model 2.6 (2600mAh)
	data sheet no. / part no.	1700-0026
	supplier no.	703572
	author / date	TG / 30.04.2015

Manufacturer reserves the right to alter or amend the design, model and specification without prior notice