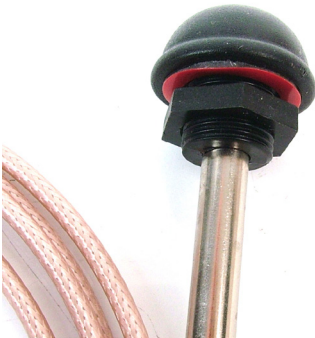


## Tango 29

Wireless LAN and Bluetooth Covert Panel Mount Antenna

### Key Features

- Wireless LAN and Bluetooth frequencies
- Compact 10mm height and 19mm Diameter
- SMA Male Reverse Polarity connector
- Groundplane Independent
- Wide operating temperature range



### General Description

The Tango 29 is a compact exterior mounted panel antenna, covert in nature due to its size and shape. It could be mistaken for a bolt/nut cover which would be hard to grip; providing a good anti-vandal solution. This antenna is supplied with the SMA male reverse polarity connector but for volume orders could be terminated with other connector types.

The Tango 29 is commonly used with WiFi, Bluetooth and Zigbee applications where an external case or cabinet is installed.

### Additional Considerations

- Ensures antenna can be discretely mounted
- Does not rely on mounting on metallic surface
- WiFi, Bluetooth and ZigBee compatible
- Omnidirectional radiation

## Tango 29

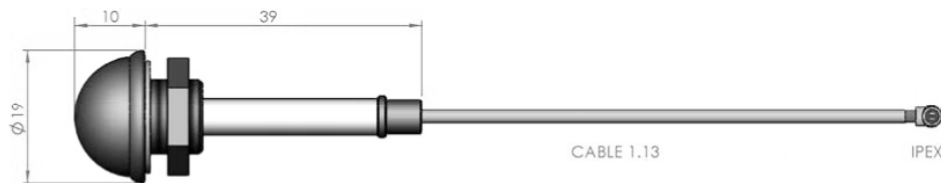
Wireless LAN and Bluetooth Covert Panel Mount Antenna

### Electrical Specification

Impedance:	50 ohm
Gain:	0dBi
VSWR:	≤ 1.9:1
Frequency:	2.4-2.5GHz
Radiation:	Omni-directional

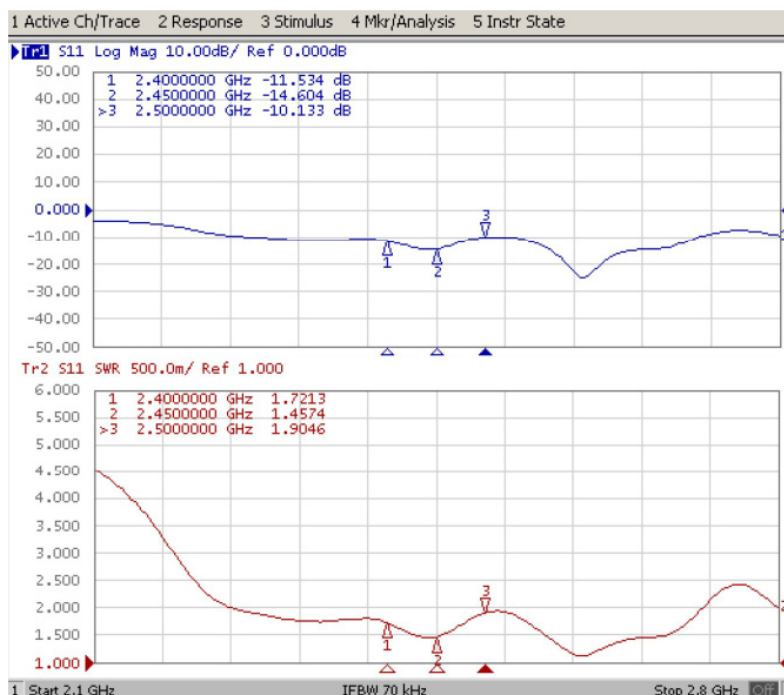
### Mechanical Specification

Operating temp:	-20 to +60°C
Storage temp:	-30 to +75°C
Dimensions:	10mm Length, 19mm Ø
Connector:	SMA Male RP
Cable:	1.13mm Ø
Mounting method:	6.5mm stud length with max panel thickness 3.5mm



### Test Data

#### Return Loss / VSWR

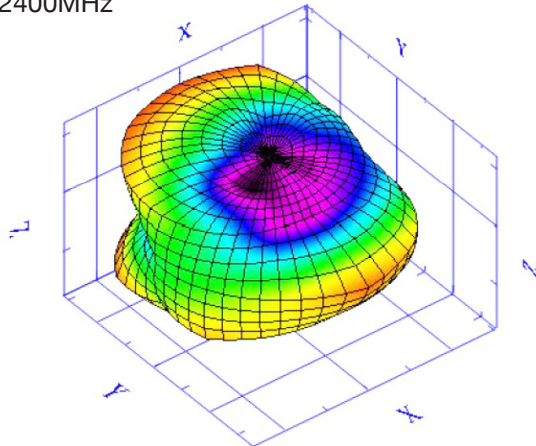


## Tango 29

Wireless LAN and Bluetooth Covert Panel Mount Antenna

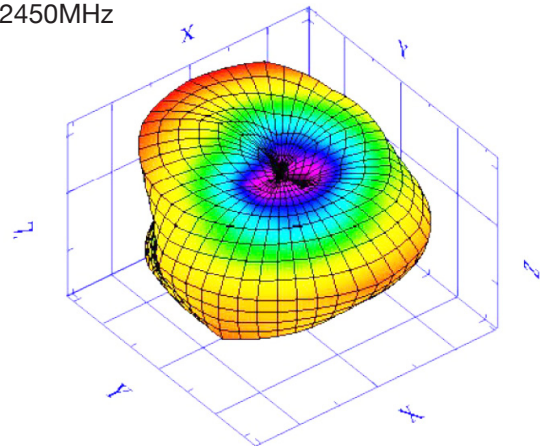
### Radiation Patterns

2400MHz



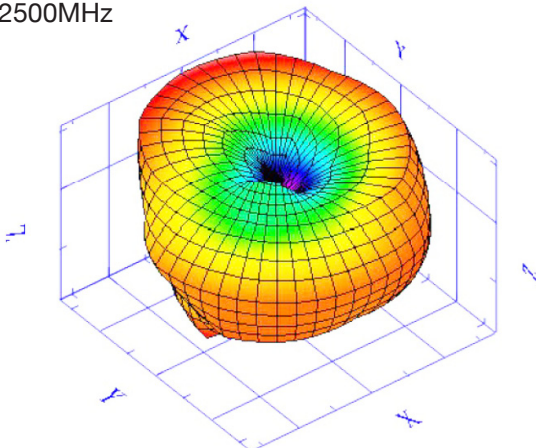
E-Total Peak Gain (dBi)	2.9
Efficiency (%)	55.1
Average Gain (dB)	-2.59

2450MHz



E-Total Peak Gain (dBi)	2.98
Efficiency (%)	56.31
Average Gain (dB)	-2.49

2500MHz



E-Total Peak Gain (dBi)	3.17
Efficiency (%)	62.47
Average Gain (dB)	-2.04

### Ordering Details

Part Number	Description
TANGO29/1M/SMAM/RP/S/35	Wireless LAN and Bluetooth Covert Panel Mount Antenna, SMA Male RP