

PURRMETRIX MOTION SENSOR

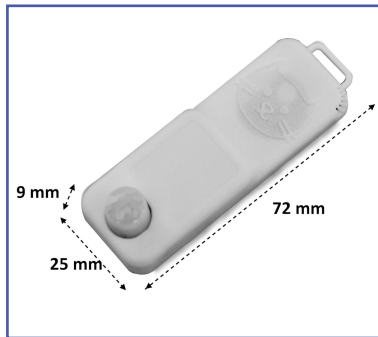
PMTX010005

V.2.5 (July 2018)

Simple wireless installation

Accurate sensing up to 5M

Maps activity on building plans



Small, discreet sensors

No of movements detected

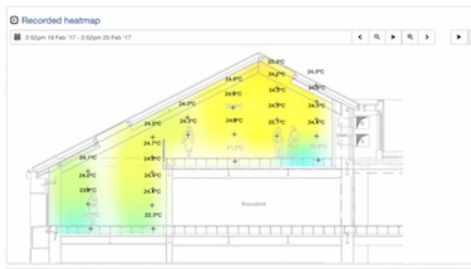
Supports Purrmatrix analytics

Purrmatrix motion/occupancy sensors measure movement and temperature to give a clear picture of which areas of a building are occupied and how frequently.

Wireless, they are easy to retrofit anywhere in a building, and send regular updates back to the Purrmatrix webservice, where they provide detailed analytics of the building's performance.

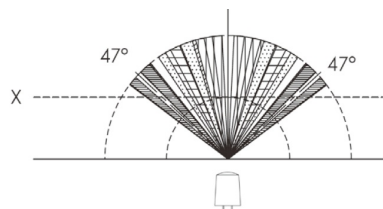
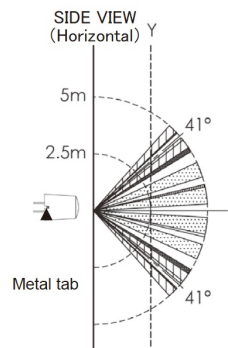
FEATURES

- Reports all events in a 5M range
- 80 x 25 x 20 mm
- Fast update (every 30 secs)
- Can be integrated with Purrmatrix analytics views
- also measures temperature (see temperature data sheet for details)



DETECTION PERFORMANCE

- Reports number of movements detected over 30 seconds
- High accuracy
- Good rejection of false reads



PURRMETRIX MOTION SENSOR

V.2.4 (Aug 2018)

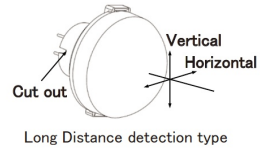
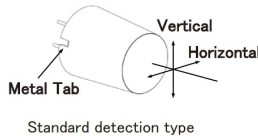
PERFORMANCE

1. Detection Performance [Conditions for measuring: Ambient temperature : 25°C(77°F) Operating voltage : 3VDC]

Items		Standard Detection type	Long Distance Detection type	Conditions concerning target
Detection Range *1)		Max. 5m	Max. 12m	1. The temperature difference between the target and the surroundings should be superior to 4°C (7.2°F). 2. Movement speed: 1.0m/s 3. Target concept is human body (Size: 700 × 250mm)
Detection Area	Horizontal *2)	94° (±47°)	102° (±51°)	
	Vertical *2)	82° (±41°)	92° (±46°)	
Detection Zone *3)		64 zones	92 zones	

*1) Depending on the target's speed and temperature difference compared to the surroundings, detection can occur at a range superior to the above value. Please use this sensor according to the specifications for guaranteed performance.

*2) Definitions for "Horizontal" and "Vertical":



*3) Refer to the "detection area" diagram on P.4.

DETECTION PERFORMANCE

1) Standard detection type

