

Display Port Plug to HDMI Type A Receptacle Cable Assembly

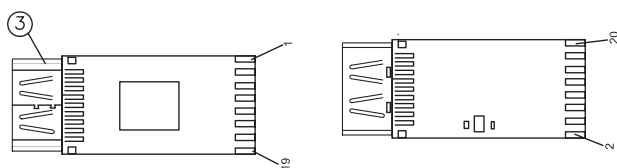
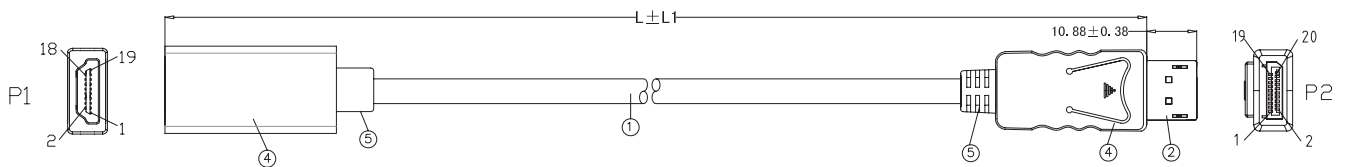
pro-SIGNAL



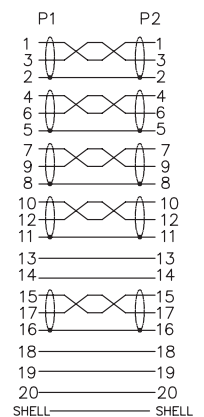
Specifications

Cable Length : 200mm, 1m
 Connector Type A : 20P Display Port Plug
 Connector Type B : 20P HDMI Type A Receptacle

Diagram



Pin Out



Part Number	L ± L1
PS000193	200 ± 30mm
PS000194	1000 ± 30mm

Dimensions : Millimetres

1. Cable

[(7/0.08TC) * 1P+D(7/0.08TC)+FAM] * 5+(7/0.08TC) * 5C + AL-FOIL+DRAIN WIRE (1/0.254BC) + BRAID(80/0.12AL-MG)
 Black PVC Jacket
 O.D: 4.8mm ± 0.2mm

2. Connector Type A

Display Port Plug
 Soldering
 Black Insulation
 Gold Plated Pin
 Nickel Shell
 Plastic Hood: ABS Shell, Black

Display Port Plug to HDMI Type A Receptacle Cable Assembly

pro-SIGNAL

3. Connector Type B

HDMI Type A Receptacle
Soldering
White Insulation
Gold Plated Pin
Nickel Shell
Plastic Hood: ABS Shell, Black

4. Inner Molded

LDPE

5. Outer Molded

45P PVC, Black

Part Number Table

Description	Part Number
Cable Assembly, Display Port Plug to HDMI Type A Receptacle, 20P, Black, 200mm	PS000193
Cable Assembly, Display Port Plug to HDMI Type A Receptacle, 20P, Black, 1m	PS000194

Important Notice : This data sheet and its contents (the "Information") belong to the members of the Premier Farnell group of companies (the "Group") or are licensed to it. No licence is granted for the use of it other than for information purposes in connection with the products to which it relates. No licence of any intellectual property rights is granted. The Information is subject to change without notice and replaces all data sheets previously supplied. The Information supplied is believed to be accurate but the Group assumes no responsibility for its accuracy or completeness, any error in or omission from it or for any use made of it. Users of this data sheet should check for themselves the Information and the suitability of the products for their purpose and not make any assumptions based on information included or omitted. Liability for loss or damage resulting from any reliance on the Information or use of it (including liability resulting from negligence or where the Group was aware of the possibility of such loss or damage arising) is excluded. This will not operate to limit or restrict the Group's liability for death or personal injury resulting from its negligence. pro-SIGNAL is the registered trademark of the Group. © Premier Farnell Limited 2016.

www.element14.com
www.farnell.com
www.newark.com
www.cpc.co.uk

pro-SIGNAL