

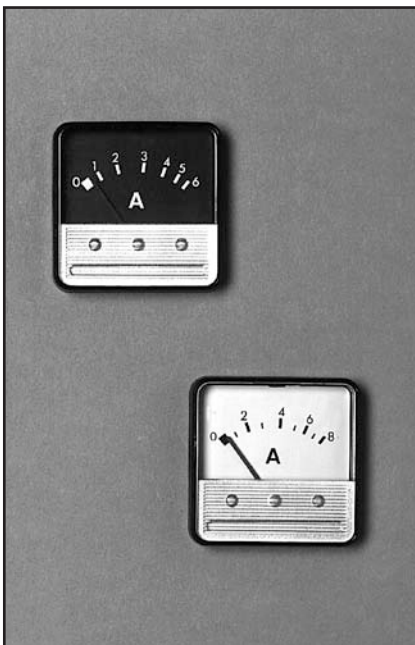
BATTERY CHARGER METERS

DESCRIPTION A range of ammeters and voltmeters with tough moving magnet or polarised moving iron movements designed for low cost indication of d.c. or rectified a.c.

APPLICATION Domestic and automotive battery chargers and d.c. power supplies.



F3PBM



Standard Range: 0/4A, 0/5A, 0/6A, 0/8A, 0/10A, 0/12A, 0/15A, 0/20A

Calibration accuracy: $\pm 8\%$ of f.s.d.

Movement: Moving magnet

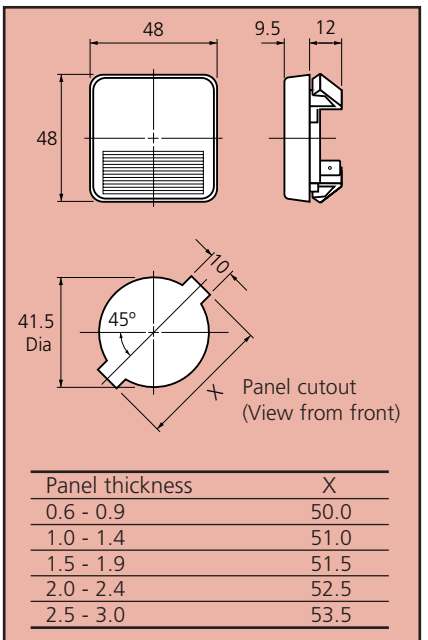
Temperature range: -20°C to $+40^{\circ}\text{C}$

Terminations: 6.3mm spades

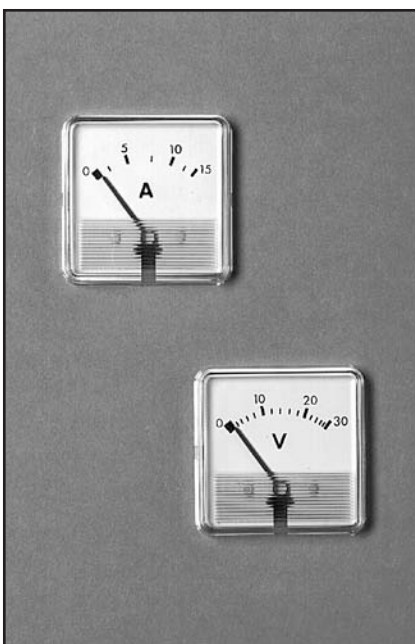
Fixing: Snap into panel

Options: Black or white dial
Black or white case

Dimensions (mm)



F3PAM



Standard Range: 0/2A, 0/4A, 0/5A, 0/6A, 0/8A, 0/10A, 0/12A, 0/15A, 0/20A, 0/25A, 0/30A, 0/15V, 0/30V

Calibration accuracy: $\pm 8\%$ of f.s.d.

Movement: Polarised moving iron

Temperature range: -20°C to $+40^{\circ}\text{C}$

Terminations: Flying leads as standard. Other terminations available on request

Fixing: Snap into panel (or U clip type F3PM)

Options: Black or white dial

Dimensions (mm)

