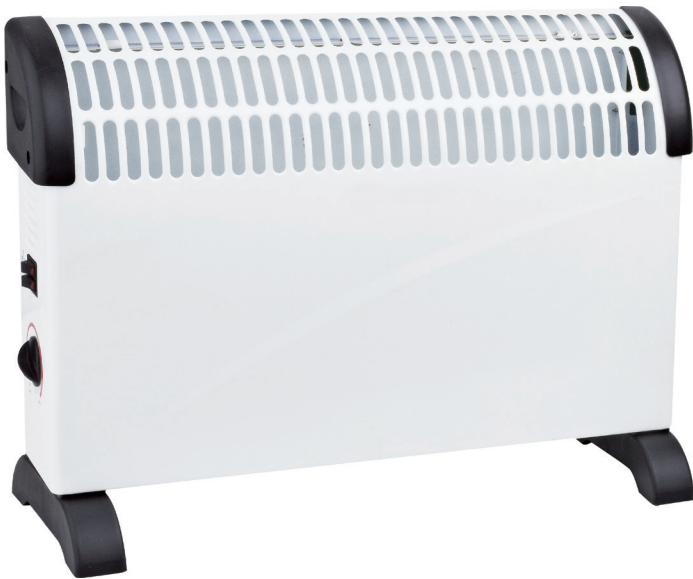


# **PRO-ELEC**



**Model: PEL00939**

**2kW CONVECTOR HEATER**

## IMPORTANT SAFETY INFORMATION

### Please read these instructions carefully before use and retain for future reference.

- Check that the voltage indicated on the rating plate corresponds with that of the local network before connecting the appliance to the mains power supply.
- To avoid fire or shock hazard, plug the appliance directly into a suitable 220-240V AC electrical outlet. DO NOT use external timer, separate remote control system, and extension cable or external adaptor with the appliance. Do not overload the circuit.
- This heater must not be located immediately below a socket-outlet.
- To disconnect the appliance, turn the control switch to "OFF" BEFORE removing the plug from main power outlet.
- When unplugging, be sure to pull by the plug and not the cord.
- Always unplug the appliance when not in use.
- Discontinue use if plug or outlet becomes hot. It is recommended that the outlet be checked and replaced if plug or outlet is hot to touch.
- DO NOT abuse or damage the power cord. Fully unwind the cord before use as a coiled cord may overheat. Do not allow the supply cord to touch hot surfaces.
- DO NOT run cord under carpeting. DO NOT cover cord with throw rugs, runners, or the like. Position the cord away from traffic area and where it will not cause a trip hazard.
- Ensure that the supply cord is kept away from heat or sharp edges that could cause damage.
- DO NOT insert or allow foreign objects to enter any ventilation or exhaust vent opening as this may cause an electric shock or fire, or damage to the appliance.
- DO NOT operate the appliance with a damaged cord or plug, or after the appliance malfunctions, has been dropped or damaged in any manner. If the supply cord is damaged, DO NOT attempt to service this appliance yourself. Return it to a qualified service agent for mechanical adjustment, or repair.

### **WARNING:** In order to avoid overheating, DO NOT COVER the heater.

- To prevent a possible fire, DO NOT block air intakes or exhaust vents in any manner. DO NOT use on soft surfaces, like a bed, where openings may become blocked.
- DO NOT move the appliance when it is operating. Only move the appliance when cool.
- The appliance is hot when in use. To avoid burns, DO NOT touch any hot surfaces. Keep combustible materials, such as furniture, pillows, bedding, papers, clothes, and curtains at least 3 ft (0.9 m) from the front of the heater and keep them away from the sides and rear.
- This appliance is not intended for use by persons (INCLUDING CHILDREN) with reduced physical, sensory or mental capabilities, or lack of experience and knowledge, unless they have been given supervision or instruction concerning use of the appliance by a person responsible for their safety.
- Children should be supervised to ensure that they do not play with the appliance.
- Do not use this heater in the immediate surroundings of a bath, or a shower.
- This appliance is not intended for use in bathrooms, laundry areas and similar indoor location where this it may come in contact with water.
- Do not immerse any part of this appliance or supply cord in water.
- DO NOT use in areas where gasoline, paint, or flammable liquids are used or stored.
- This appliance is designed for indoors ONLY.

## ASSEMBLY

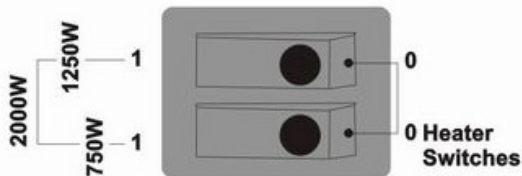
### Fitting the Feet

- Carefully turn the unit upside down. Using the four 12mm screws provided, affix the feet to the underside of the heater (see right).



## OPERATION

- Before connecting the appliance to the mains, make sure that all switches are set to the “OFF” position.
- Insert the plug of the heater into the mains socket.
- Adjust the thermostat to a desired temperature level.
- Turn on the heating element using the two rocker switches on the side panel. They will illuminate when the heating elements are on.
- Never pull on the cord when disconnecting from the mains.



**Note:** It is normal when the heater is turned on after a period of no use for it to emit some odour. This will disappear after the heater has been on for a short time.

## CLEANING & MAINTENANCE

- Always unplug the heater from the wall socket and allow it to cool down before cleaning.
- Clean the outside of the heater by wiping it with a clean, damp cloth.
- Do not use any chemicals, abrasives or solvents that may damage the heater.
- Do not allow any water to enter the inner appliance.
- To store the heater, place it in a clean, dry environment, ensuring it is protected from dust.

## SPECIFICATIONS

Model	PEL00939	Heat Output	
Rated Voltage	220-240VAC	Nominal heat output $P_{nom}$	1.8-2.0kW
Frequency	50/60Hz	Min heat output $P_{min}$	0kW
Rated Power	1800-2000W	Max heat output $P_{max}$	2.0kW
Auxiliary electricity consumption			
At nominal heat output $e_{l_{max}}$			0kW
At minimum heat output $e_{l_{min}}$			0kW
In standby mode $e_{l_{sb}}$			N/A
With mechanical thermostat room temperature control			YES



### INFORMATION ON WASTE DISPOSAL FOR CONSUMERS OF ELECTRICAL & ELECTRONIC EQUIPMENT

When this product has reached the end of its life it must be treated as Waste Electrical & Electronics Equipment (WEEE). Any WEEE marked products must not be mixed with general household waste, but kept separate for the treatment, recovery and recycling of the materials used. Contact your local authority for details of recycling schemes in your area.



As with all portable heaters -  
This product is only suitable for well insulated spaces or occasional use.

Made in China. PR2 9PP

Man Ref 1.1