

# SONY®

## Home Audio System

### Operating Instructions

---

Getting Started

---

BLUETOOTH

---

Sound Adjustment

---

Other Operations

---

Additional Information

## WARNING

To reduce the risk of fire, do not cover the ventilation opening of the appliance with newspapers, tablecloths, curtains, etc. Do not expose the appliance to naked flame sources (for example, lighted candles).

To reduce the risk of fire or electric shock, do not expose this appliance to dripping or splashing, and do not place objects filled with liquids, such as vases, on the appliance.

As the main plug is used to disconnect the unit from the mains, connect the unit to an easily accessible AC outlet. Should you notice an abnormality in the unit, disconnect the main plug from the AC outlet immediately.

Do not install the appliance in a confined space, such as a bookcase or built-in cabinet.

The unit is not disconnected from the mains as long as it is connected to the AC outlet, even if the unit itself has been turned off.

Indoor use only.

## For customers in Europe

### Disposal of waste batteries and electrical and electronic equipment (applicable in the European Union and other European countries with separate collection systems)



This symbol on the product, the battery or on the packaging indicates that the product and the battery shall not be treated as household waste. On certain batteries

this symbol might be used in combination with a chemical symbol. The chemical symbols for mercury (Hg) or lead (Pb) are added if the battery contains more than 0.0005% mercury or 0.004% lead. By ensuring these products and batteries are disposed of correctly, you will help prevent potentially negative consequences for the environment and human health which could otherwise be caused by inappropriate waste handling. The recycling of the materials will help to conserve natural resources.

In case of products that for safety, performance or data integrity reasons require a permanent connection with an incorporated battery, this battery should be replaced by qualified service staff only. To ensure that the battery and the electrical and electronic equipment will be treated properly, hand over these products at end-of-life to the applicable collection point for the recycling of electrical and electronic equipment. For all other batteries, please view the section on how to remove the battery from the product safely. Hand the battery over to the applicable collection point for the recycling of waste batteries. For more detailed information about recycling of this product or battery, please contact your local Civic Office, your household waste disposal service or the shop where you purchased the product or battery.

**Notice for customers: the following information is only applicable to equipment sold in countries applying EU directives.**

This product has been manufactured by or on behalf of Sony Corporation, 1-7-1 Konan Minato-ku Tokyo, 108-0075 Japan. Inquiries related to product compliance based on European Union legislation shall be addressed to the authorized representative, Sony Belgium, bijkantoor van Sony Europe Limited, Da Vincilaan 7-D1, 1935 Zaventem, Belgium. For any service or guarantee matters, please refer to the addresses provided in the separate service or guarantee documents.

Hereby, Sony Corp., declares that this equipment is in compliance with the essential requirements and other relevant provisions of Directive 1999/5/EC.

For details, please access the following URL:  
<http://www.compliance.sony.de/>



The validity of the CE marking is restricted to only those countries where it is legally enforced, mainly in the countries EEA (European Economic Area).

This equipment has been tested and found to comply with the limits set out in the EMC Directive using a connection cable shorter than 3 meters.

**For customers in Australia**



**Disposal of Old Electrical & Electronic Equipment (Applicable in the European Union and other European countries with separate collection systems)**

This system is designed to be used for the following purposes:

- Playing back music sources on BLUETOOTH devices
- Enjoying social gatherings with the "Party Chain" or speaker add function

---

## About this manual

Some illustrations are presented as conceptual drawings, and may be different from the actual products.

---

# Table of Contents

About this manual.....	4
Guide to parts and controls .....	6

---

## Getting Started

Turning on the system .....	8
Carrying the system .....	8
Placing the system horizontally .....	8
About the power management.....	9

---

## BLUETOOTH

Pairing this system with a BLUETOOTH device.....	10
Listening to music on a BLUETOOTH device.....	11
One Touch BLUETOOTH Connection by NFC .....	12
About the BLUETOOTH wireless technology.....	14
Playing back with high quality sound codec (AAC/LDAC™) ....	14
Setting the BLUETOOTH standby mode .....	15
Turning on or off the BLUETOOTH signal.....	16
Using “SongPal” via BLUETOOTH .....	16

---

## Sound Adjustment

Adjusting the sound.....	17
--------------------------	----

---

## Other Operations

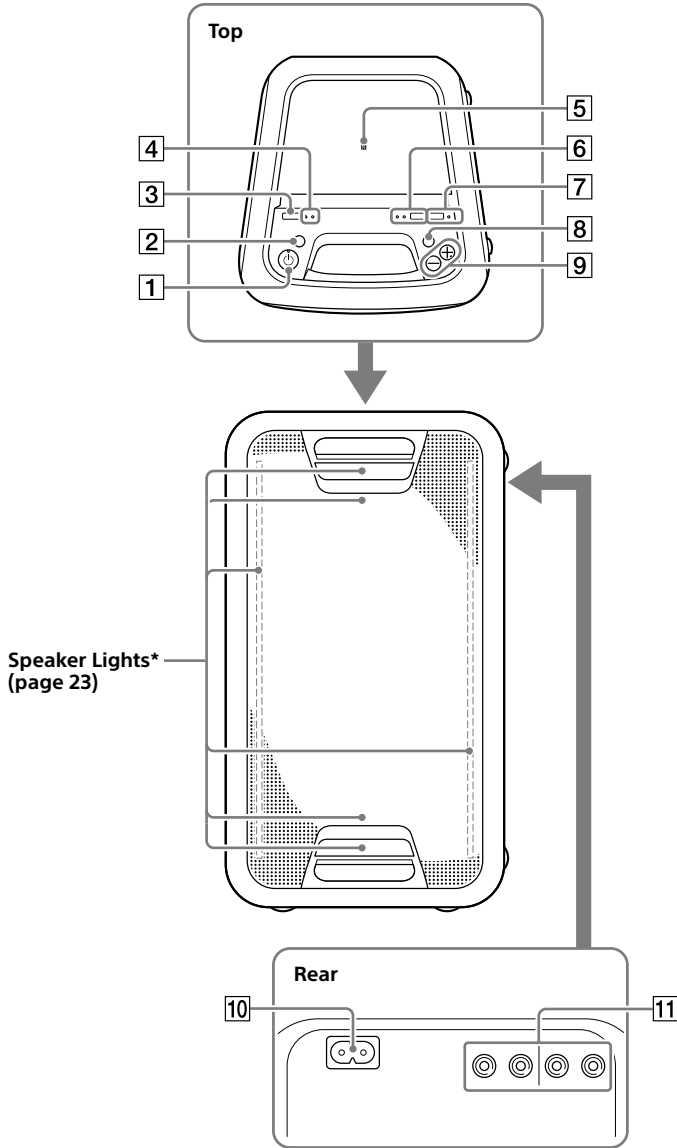
Using the Party Chain function.....	18
Listening to music wirelessly with two systems (Speaker add function).....	21
Enjoying music with the Speaker Lights turned on .....	23
Using an optional equipment .....	23
Setting the automatic standby function .....	23

---


## Additional Information


Information about compatible devices .....	24
Troubleshooting .....	24
Precautions .....	26
Specifications.....	28
License and Trademark Notice.....	29

# Guide to parts and controls



\* Do not look directly at the light-emitting parts when the Speaker Lights are turned on.

- 1  (power) button  
Press to turn on or off the system.


 (power) indicator

- Lights up in green while the system is turned on.
- Lights up in amber while the system is turned off, and when the BLUETOOTH standby mode is turned on.

- 2 LIGHT button (page 23)

- 3 FUNCTION – PAIRING button

- Press repeatedly to select the BLUETOOTH or Audio In function.
- When the BLUETOOTH function is selected, hold down to activate BLUETOOTH pairing.

- 4  (BLUETOOTH) indicator (page 14)

AUDIO IN indicator (page 23)

- 5  (N-Mark) (page 13)

- 6 ADD button (page 21)

ADD L/R indicators (page 21)

- 7 PARTY CHAIN button (page 20)

PARTY CHAIN indicator (page 20)

- 8 EXTRA BASS button

Press to generate more dynamic sound (page 17).

EXTRA BASS indicator (page 17)

- 9 Volume +/- buttons

Press to adjust the volume.

- 10 AC IN jack (page 8)

- 11 Audio output and input jacks

Use an audio cord (not supplied) to make either connection as follows:

• AUDIO/PARTY CHAIN OUT L/R jacks

- Connect to the audio input jacks of an optional equipment.
- Connect to another audio system to enjoy the Party Chain function (page 18).




• AUDIO/PARTY CHAIN IN L/R jacks

- Connect to the audio output jacks of a TV or an audio/video equipment. The sound is output through this system.
- Connect to another audio system to enjoy the Party Chain function (page 18).

\* The volume + button has a tactile dot. Use the tactile dot as a reference when operating the system.

## Indicator statuses

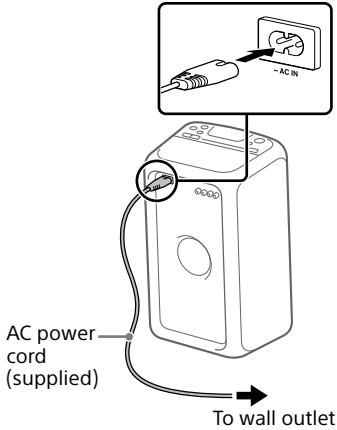
The statuses of the indicators on the unit are shown in the illustrations as follows.

Indicator status	Illustration
Flashing	
Lit up	
Turned off	



## Getting Started

### Turning on the system

- 1 **Connect the AC power cord (supplied) to the AC IN jack on the rear of the unit, and then to the wall outlet.**



The system is turned on in the demonstration mode and the demonstration starts automatically.

- 2 **Press  to turn on the system.**  
The  indicator lights up in green.

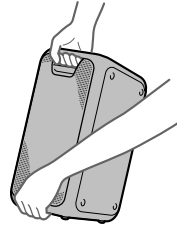
### Deactivating the demonstration

**Press LIGHT while the demonstration is performed.**

The demonstration ends and the system enters the standby mode. When you press LIGHT during the standby mode, or when you disconnect and reconnect the AC power cord, the system enters the demonstration mode.

### Carrying the system

Before carrying the system, disconnect all the cords.

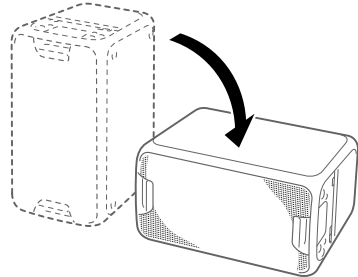


#### Note

Correct hand placement while carrying the system is very important to avoid personal injury and/or property damage.

### Placing the system horizontally

You can also place the system horizontally as illustrated below. (Place the rubber feet side down.)





---

## About the power management



By default, this system is set to turn off automatically in about 15 minutes when there is no operation, and no audio signal is detected. For details, see "Setting the automatic standby function" (page 23).

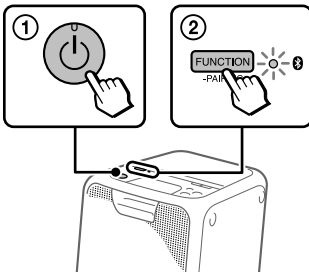
## BLUETOOTH

### Pairing this system with a BLUETOOTH device


Pairing is an operation where BLUETOOTH devices register with each other beforehand. Once a pairing operation is performed, it does not need to be performed again. If your device is an NFC-compatible smartphone, the manual pairing procedure is not necessary. (See "One Touch BLUETOOTH Connection by NFC" (page 12).)

- 1 Place the BLUETOOTH device within 1 meter (3 feet) from the system.
- 2 Select the BLUETOOTH function.


- ① Press  to turn on the system.
- ② Press FUNCTION - PAIRING repeatedly until the  (BLUETOOTH) indicator on the unit flashes slowly.

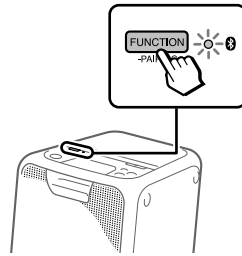


#### Hints

- When there is no pairing information on the system (for example, when you use the BLUETOOTH function for the first time after purchase), the  (BLUETOOTH) indicator flashes quickly and the system enters the pairing mode automatically. In this case, proceed to step 4.
- If the BLUETOOTH connection is established, terminate the BLUETOOTH connection (page 12).

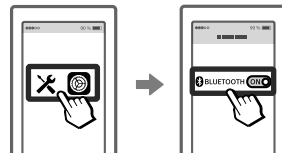
- 3 Hold down FUNCTION - PAIRING for more than 3 seconds.

The  (BLUETOOTH) indicator flashes quickly.



- 4 Perform the pairing procedure on the BLUETOOTH device.

For details, refer to the operating instructions of your BLUETOOTH device.




- 5 Select "GTK-XB5" on the display of the BLUETOOTH device.

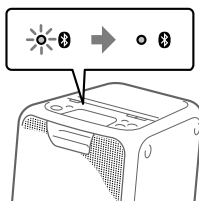


#### Note

If passkey is required on the BLUETOOTH device, enter "0000." "Passkey" may be called "Passcode," "PIN code," "PIN number," or "Password."

## 6 Perform the BLUETOOTH connection on the BLUETOOTH device.

When pairing is completed and the BLUETOOTH connection is established, the  (BLUETOOTH) indicator on the unit stops flashing and remains lit.



Depending on the BLUETOOTH device, connection may start automatically after pairing is completed.

### Notes

- You can pair up to 8 BLUETOOTH devices. If the 9th BLUETOOTH device is paired, the oldest paired device will be deleted.
- If you want to pair with another BLUETOOTH device, repeat steps 1 to 6.

### To cancel the pairing operation

Press FUNCTION – PAIRING.

### Erasing all the pairing registration information

To erase all the pairing registration information, the system should be reset to the factory default settings. See “Resetting the system” (page 26).

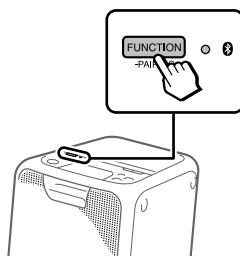
## Listening to music on a BLUETOOTH device

You can operate a BLUETOOTH device by connecting the system and the BLUETOOTH device using AVRCP. Check the following before playing music:

- The BLUETOOTH function of the BLUETOOTH device is turned on.
- Pairing has been completed (page 10).

Once the system and the BLUETOOTH device are connected, you can control playback by using the BLUETOOTH device.

### 1 Press FUNCTION – PAIRING repeatedly until the (BLUETOOTH) indicator on the unit lights up.

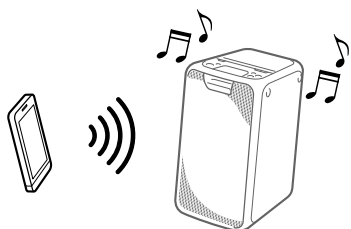


### 2 Establish connection with the BLUETOOTH device.

The last connected BLUETOOTH device will be connected automatically. Perform the BLUETOOTH connection from the BLUETOOTH device if the device is not connected.

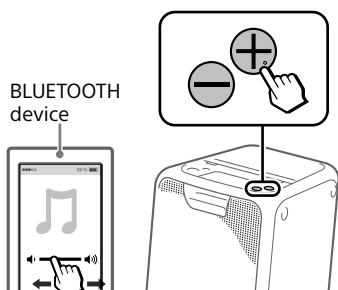
### 3 Start playback of an audio source on the BLUETOOTH device.

For details, refer to the operating instructions of your BLUETOOTH device.



### 4 Adjust the volume.

Adjust the volume of the BLUETOOTH device first. If the volume level is still too low, adjust the volume level on the system using the volume +/- buttons.



#### Note

If you try to connect another BLUETOOTH device to the system, the currently connected BLUETOOTH device will be disconnected.

### To terminate the BLUETOOTH connection

Hold down FUNCTION – PAIRING for more than 3 seconds.

Depending on the BLUETOOTH device, the BLUETOOTH connection may be terminated automatically when you stop playback.

## One Touch BLUETOOTH Connection by NFC

NFC (Near Field Communication) is a technology enabling short-range wireless communication between various devices, such as smartphones and IC tags.

When you touch the system with an NFC-compatible smartphone, the system automatically:

- turns on in the BLUETOOTH function.
- completes the pairing and BLUETOOTH connection.

#### Compatible smartphones

Smartphones with a built-in NFC function (OS: Android™ 2.3.3 or later, excluding Android 3.x)

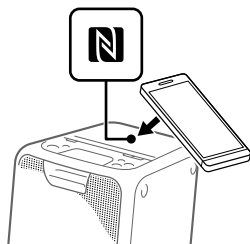
#### Notes

- The system can only recognize and connect to one NFC-compatible smartphone at a time. If you try to connect another NFC-compatible smartphone to the system, the currently connected NFC-compatible smartphone will be disconnected.
- Depending on your NFC-compatible smartphone, you may need to perform the following steps on your NFC-compatible smartphone in advance.
  - Turn on the NFC function. For details, refer to the operating instructions of the NFC-compatible smartphone.
  - If your NFC-compatible smartphone has an OS version that is older than Android 4.1.x, download and start the “NFC Easy Connect” application. “NFC Easy Connect” is a free application for Android smartphones that can be obtained from Google Play™. (The application may not be available in some countries/regions.)

### 1 Turn on the NFC function of the BLUETOOTH device.

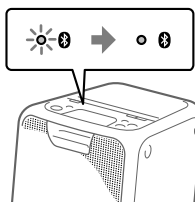


- 2** Touch the **BLUETOOTH** device, such as a smartphone or tablet, to the **N-Mark** on the unit until the **BLUETOOTH** device vibrates.



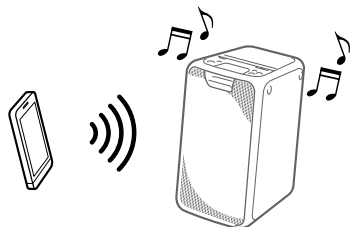
Complete the connection by following the instructions displayed on the **BLUETOOTH** device.

When the **BLUETOOTH** connection is established, the **BLUETOOTH** indicator on the unit stops flashing and remains lit.



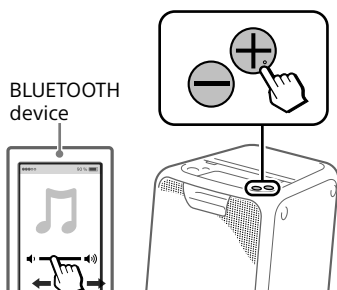
- 3** Start playback of an audio source on the **BLUETOOTH** device.

For details, refer to the operating instructions of your **BLUETOOTH** device.



- 4** Adjust the volume.

Adjust the volume of the **BLUETOOTH** device first. If the volume level is still too low, adjust the volume level on the system using the volume +/- buttons.



**Hint**

If pairing and the **BLUETOOTH** connection fail, perform the following.

- Remove the case from the smartphone if using a commercially available smartphone case.
- Touch the smartphone to the **N-Mark** on the unit again.
- Relaunch the “**NFC Easy Connect**” application.

**To terminate the BLUETOOTH connection**

Touch the **BLUETOOTH** device to the **N-Mark** on the unit again.

---


## About the BLUETOOTH wireless technology

BLUETOOTH wireless technology is a short-range wireless technology that enables wireless data communication between digital devices. BLUETOOTH wireless technology operates within a range of about 10 meters (33 feet).

### Supported BLUETOOTH version, profiles and codecs

For details, see “BLUETOOTH section” (page 28).

#### (BLUETOOTH) indicator

The  (BLUETOOTH) indicator on the unit lights up or flashes in blue to show the BLUETOOTH status.

System status	Indicator status
BLUETOOTH standby	Flashing slowly
BLUETOOTH pairing	Flashing quickly
BLUETOOTH connection is established	Lit up

---

## Playing back with high quality sound codec (AAC/LDAC™)

This system can receive data in the AAC or LDAC codec format from a BLUETOOTH device. It provides a playback with higher sound quality.

You can select an audio codec option from the following two settings by using “SongPal” (page 16). The default setting of this system is “AUTO.”

To apply the changes of the setting, you need to terminate the BLUETOOTH connection (page 12), and then perform the BLUETOOTH connection again.

- AUTO: The system detects the codec used on the source device and automatically selects the optimal codec from “SBC,” “AAC\*” or “LDAC\*.”
- SBC: “SBC” is always applied regardless of the codec used on the source device.

\* Available only when the codec is supported by your BLUETOOTH device.

#### Note

You can enjoy higher sound quality when the source device is compatible with AAC/LDAC and this function is set to “AUTO.” However, the sound may be interrupted depending on the conditions of the BLUETOOTH communication. If this happens, set the function to “SBC.”

LDAC is an audio coding technology developed by Sony, that enables the transmission of High-Resolution (Hi-Res) Audio content, even over a BLUETOOTH connection. Unlike other BLUETOOTH compatible coding technologies, such as SBC, it operates without any down-conversion of the Hi-Res Audio content<sup>1)</sup>. It also allows approximately three times more data<sup>2)</sup> than the other technologies, for transmitting over a BLUETOOTH wireless network with unprecedented sound quality using efficient coding and optimized data bundling.

<sup>1)</sup> Excluding DSD format contents.

<sup>2)</sup> In comparison with SBC (Sub Band Codec), when the bit rate of 990 kbps (96/48 kHz) or 909 kbps (88.2/44.1 kHz) is selected.

## Setting the BLUETOOTH standby mode

The BLUETOOTH standby mode enables the system to turn on automatically when you establish the BLUETOOTH connection with a BLUETOOTH device. This setting is turned off by default.

This setting can only be configured by using "SongPal." For details on "SongPal," see "Using "SongPal" via BLUETOOTH" (page 16).

### Hint

Disable the BLUETOOTH standby mode to reduce the power consumption in standby mode (eco mode).

---

## Turning on or off the BLUETOOTH signal

You can connect to the system from a paired BLUETOOTH device in all functions when the system's BLUETOOTH signal is set to on. This setting is turned on by default.

### Hold down FUNCTION – PAIRING and the volume + button for more than 5 seconds.

#### Note

You cannot perform the following operations when you turn off the BLUETOOTH signal:

- Pairing and/or connecting with BLUETOOTH device
- Using “SongPal” via BLUETOOTH

To turn on the BLUETOOTH signal, repeat the procedure shown above.

---

## Using “SongPal” via BLUETOOTH

### About App



You can control the system using the free App “SongPal,” which is available on both Google Play and the App Store. Search for “SongPal” or scan the two-dimensional code below, then download the App to find out more about the convenient features.



Downloading “SongPal” on your smartphone/iPhone provides the following.

#### Adjusting the sound (EQ)

You can adjust the sound by choosing from a variety of preset EQs.

#### Creating a party atmosphere (DJ EFFECT)

You can control the sound dynamically by selecting one of 3 effects (FLANGER/ISOLATOR/WAH).

#### Configuring the settings on the system

You can configure the various settings on the system, such as the auto standby mode, etc.

#### Configuring the settings of the BLUETOOTH function

You can configure the various settings of the BLUETOOTH function, such as the BLUETOOTH audio codecs, the BLUETOOTH standby mode, etc.



► Refer to SongPal Help for more details.

<http://info.songpal.sony.net/help/>



#### Notes

- If the “SongPal” application does not work properly, terminate the BLUETOOTH connection (page 12), then perform the BLUETOOTH connection again so that the BLUETOOTH connection functions normally.
- What you can control with “SongPal” varies depending on the connected device.
- The specification and design of the application may change without notice.

## Sound Adjustment

### Adjusting the sound

To	Do this
Adjust the volume	Press the volume +/- buttons.
Generate a more dynamic sound	Press EXTRA BASS. The EXTRA BASS indicator lights up in red while the EXTRA BASS function is turned on.

# Using the Party Chain function

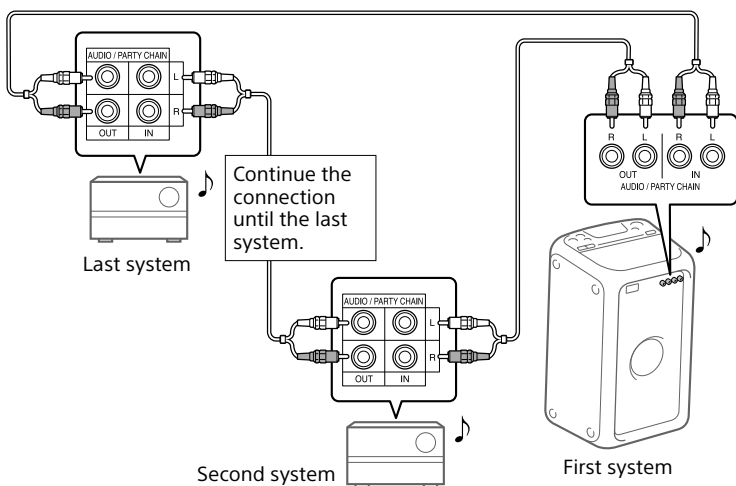
You can connect multiple audio systems in a chain to create a more interesting party environment and to produce higher sound output. An activated system in the chain will be the "Party Host" and share the music. Other systems will become "Party Guests" and play the same music as that being played by the "Party Host."


## Setting up the Party Chain

Set up a Party Chain by connecting all the systems using audio cords (not supplied). Before connecting cords, be sure to disconnect the AC power cord.

### **A** If all the systems are equipped with the Party Chain function

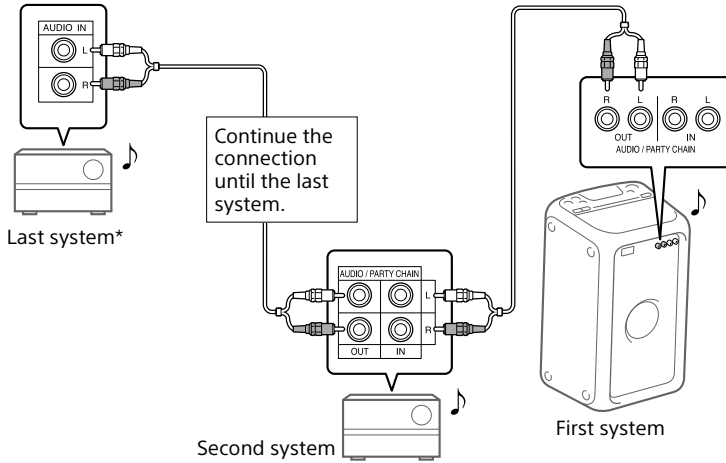
Example: When connecting using this system as the first system



- The last system must be connected to the first system.
- Any system can become a Party Host.
- You can change the Party Host to another system in the chain. For details, see "To select a new Party Host" (page 20).
- Make sure the  (BLUETOOTH) function is selected. When the Audio In function is selected, the Party Chain function cannot be activated.

## **B** If one of the systems is not equipped with the Party Chain function

Example: When connecting using this system as the first system



\* Connect the system which is not equipped with the Party Chain function at the last system. Be sure to select the Audio In function on this last system.

- The last system is not connected to the first system.
- You must select the first system as Party Host so that all systems are playing the same music when Party Chain function is activated.
- Sound output from a system not equipped with the Party Chain function may lag slightly.

## Enjoying the Party Chain

- 1 **Plug in the AC power cord and turn on all the systems.**
- 2 **Adjust the volume on each system.**
- 3 **Activate the Party Chain function on the system to be used as the Party Host.**

**Example: When using this system as the Party Host**

- ① **Press FUNCTION – PAIRING repeatedly to select the function you want.**  
When you connect using **A** (page 18), do not select the Audio In function. If you select this function, sound cannot be output.
- ② **Start playback, then press PARTY CHAIN.**  
The PARTY CHAIN indicator lights up. The Party Host starts the Party Chain, and other systems become Party Guests automatically. All systems play the same music as that being played by the Party Host.

### Notes

- Depending on the total unit of systems you have connected, Party Guests may take some time to start playing the music.
- Changing the volume level and sound effect on the Party Host will not affect the output on the Party Guests.
- For detailed operation on other systems, refer to the operating instructions of the systems.

## To select a new Party Host

Only when you connect using **A** (page 18), you can select a new Party Host. Repeat step 3 of “Enjoying the Party Chain” on the system to be used as a new Party Host. The current Party Host becomes Party Guest automatically. All systems play the same music as that being played by the new Party Host.

### Notes

- You can select another system as the new Party Host only after the Party Chain function of all the systems in the chain has been activated.
- If the selected system does not become a new Party Host after a few seconds, repeat step 3 of “Enjoying the Party Chain.”

## To deactivate the Party Chain

Press PARTY CHAIN on the Party Host.

### Note

If the Party Chain function is not deactivated after a few seconds, press PARTY CHAIN on the Party Host again.

## Party Chain indicator

The Party Chain indicator on the unit lights up or flashes to show the system status.

System status	Indicator status
Party Host	Lit up
Party Guest	Flashing

## Listening to music wirelessly with two systems (Speaker add function)

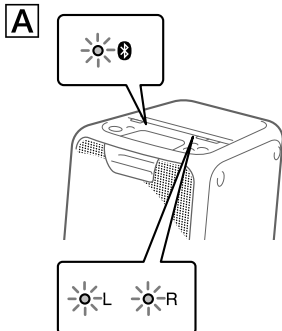
To use this function, two GTK-XB5 systems are required. By connecting two GTK-XB5 systems via BLUETOOTH, you can enjoy music in a more powerful way. You can also select an audio output between double mode (in which the two systems play the same sound) and stereo mode (stereo sound).

In the following steps, the two systems are described as "system **A**" (or master system) and "system **B**."

### Activating the speaker add function

- 1 Bring two GTK-XB5 systems within 1 meter (3 feet) of each other.
- 2 Press **FUNCTION – PAIRING** on system **A** repeatedly until the **BLUETOOTH** indicator on the unit lights up.
- 3 Hold down **ADD** on system **A** until the **ADD L/R** indicators on the unit flash.

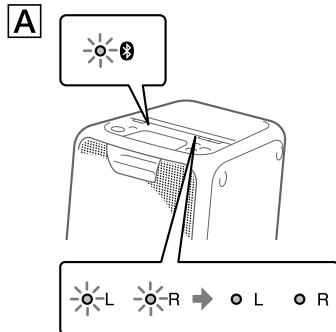
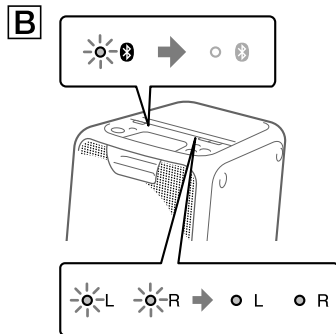
The system enters the speaker add mode.



- 4 Press **FUNCTION – PAIRING** on system **B** repeatedly until the **BLUETOOTH** indicator on the unit lights up.

- 5 Hold down **ADD** on system **B** until the **ADD L/R** indicators on the unit flash.

Then the L/R indicators on both systems change their status from flashing to lit while the **BLUETOOTH** indicator on system **B** is turned off.



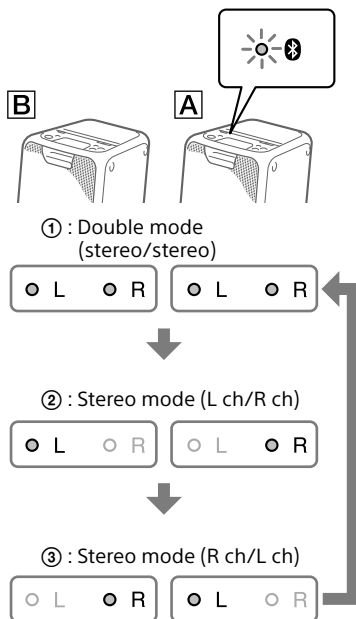
### Hint

When the connection by the speaker add function is established very quickly, the L/R indicators on system **B** may light up directly without flashing.

## 6 Press ADD on system **A** repeatedly to select the output mode.

The ADD L/R indicators on both systems show the current output mode.

Each time you press ADD, the output mode changes as follows.



### Hint

To change the output mode, operate system **A** (master system), on which you have activated the speaker add mode.

## Playing music with two systems

### 1 Activate the pairing mode on system **A**, and then perform the BLUETOOTH connection with a BLUETOOTH device.

For details on the pairing, see "Pairing this system with a BLUETOOTH device" (page 10) or "One Touch BLUETOOTH Connection by NFC" (page 12). Make sure to pair the BLUETOOTH device with system **A** (master system).

### 2 Start playback on the BLUETOOTH device, and adjust the volume.

For details, see "Listening to music on a BLUETOOTH device" (page 11).

Volume adjustments made on either one of the two systems are also reflected on the other system.

### Notes

- If any other BLUETOOTH device(s), such as a BLUETOOTH mouse or BLUETOOTH keyboard, is connected to the BLUETOOTH device that is connecting with the system, there may be distorted sound or noise in the system output. In this case, terminate the BLUETOOTH connection between the BLUETOOTH device and other BLUETOOTH device(s).
- If you reset one of the two systems while using the speaker add function, make sure to turn off the other system. If you do not turn off the other system before restarting the speaker add function, there may be problems in making a BLUETOOTH connection and outputting sound.

### To deactivate the speaker add function

Hold down ADD until the ADD L/R indicators are turned off.

### Hint

Unless you deactivate the function, the system will try to establish the last made connection next time you turn on the system.

---

## Enjoying music with the Speaker Lights turned on

### 1 Press LIGHT.

The Speaker Lights are turned on.

You can also select various light modes such as the following by using "SongPal" (page 16).

- RAVE: a light mode suitable for dance music with a lot of flashing
- CHILL: a light mode suitable for relaxing music
- RANDOM FLASH OFF: a light mode without flash suitable for all music, including dance music
- HOT: a light mode of warm color
- COOL: a light mode of cool color
- STROBE: a light mode with an electronic flash of white color

### To turn off the Speaker Lights

Press LIGHT again.

#### Note

If the illumination brightness is glaring, switch on the room lights or turn off the illumination.

---

## Using an optional equipment

- 1 Connect an optional equipment (i.e. WALKMAN®, smartphone, TV, DVD player, IC recorder, etc.) to the AUDIO/PARTY CHAIN IN L/R jacks on the unit using an audio cord (not supplied).
- 2 Press FUNCTION – PAIRING repeatedly until the AUDIO IN indicator on the unit lights up.
- 3 Start playback on the connected equipment.

### 4 Adjust the volume.

Adjust the volume of the connected equipment first. If the volume level is still too low, adjust the volume level on the system using the volume +/- buttons.

#### Note

The system may enter standby mode automatically if the volume level of the connected equipment is too low. In this case, increase the volume level of the equipment. To turn off the automatic standby function, see "Setting the automatic standby function" (page 23).

---

## Setting the automatic standby function

By default, this system is set to turn off automatically in about 15 minutes when there is no operation or audio signal output.

### To turn off the function, hold down more than 3 seconds while the system is turned on.

To turn on the function, repeat the procedure.

You can also configure this setting and make sure whether this function is turned on or off by using "SongPal." For details on "SongPal," see "Using "SongPal" via BLUETOOTH" (page 16).

# Information about compatible devices

## About BLUETOOTH communication for iPhone and iPod touch

### Made for

- iPhone SE
- iPhone 6s Plus
- iPhone 6s
- iPhone 6 Plus
- iPhone 6
- iPhone 5s
- iPhone 5c
- iPhone 5
- iPhone 4s
- iPod touch (6th generation)
- iPod touch (5th generation)

## Websites for compatible devices

Check the websites below for the latest information about compatible BLUETOOTH devices.

### For customers in the USA:

<http://esupport.sony.com/>

### For customers in Canada:

<http://esupport.sony.com/CA>

### For customers in Europe:

<http://www.sony.eu/support>

### For customers in Latin America:

<http://esupport.sony.com/LA>

### For customers in other countries/ regions:

<http://www.sony-asia.com/support>

# Troubleshooting

If a problem occurs while operating the system, follow the steps described below before consulting your nearest Sony dealer. If an error message appears, be sure to make a note of the contents for reference.

**1 Check to see if the problem is listed in this “Troubleshooting” section.**

**2 Check the following customer support websites.**

### For customers in the USA:

<http://esupport.sony.com/>

### For customers in Canada:

<http://esupport.sony.com/CA>

### For customers in Europe:

<http://www.sony.eu/support>

### For customers in Latin America:

<http://esupport.sony.com/LA>

### For customers in other countries/ regions:

<http://www.sony-asia.com/support>

You will find the latest support information and a FAQ at these websites.

Note that if the service personnel changes some parts during repair, these parts may be retained.

## General

### The system does not turn on.

- Check that the AC power cord is connected securely.

### The system has entered standby mode.

- This is not a malfunction. The system enters standby mode automatically in about 15 minutes when there is no operation or audio signal output (page 23).



### **There is no sound.**

- Adjust the volume.
- Check the connection of the optional equipment, if any.
- Turn on the connected equipment.
- Disconnect the AC power cord, then reconnect the AC power cord and turn on the system.

### **There is severe hum or noise.**

- Move the system away from sources of noise.
- Connect the system to a different wall outlet.
- Install a noise filter (commercially available) to the AC power cord.
- Turn off surrounding electrical equipment.

### **There is acoustic feedback.**

- Reduce the volume.

## **BLUETOOTH device**

---

### **Pairing cannot be performed.**

- Move the BLUETOOTH device closer to the system.
- Pairing may not be possible if other BLUETOOTH devices are present around the system. In this case, turn off the other BLUETOOTH devices.
- Make sure to enter the correct passkey when selecting the system's name (this system) on the BLUETOOTH device.

### **The BLUETOOTH device cannot detect the system.**

- Set the BLUETOOTH signal to on (page 16).

### **Connection is not possible.**

- The BLUETOOTH device you attempted to connect does not support the A2DP profile, and cannot be connected with the system.
- Enable the BLUETOOTH function of the BLUETOOTH device.
- Establish a connection from the BLUETOOTH device.
- The pairing registration information has been erased. Perform the pairing operation again.

- If you cannot connect to the system from an already paired BLUETOOTH device, erase the pairing information of the BLUETOOTH device, and then perform the pairing operation again (page 10).

### **The sound skips or fluctuates, or the connection is lost.**

- The system and the BLUETOOTH device are too far apart.
- If there are obstacles between the system and your BLUETOOTH device, remove or avoid the obstacles.
- If there is equipment that generates electromagnetic radiation, such as a wireless LAN, other BLUETOOTH device, or a microwave oven nearby, move them away.

### **The sound of your BLUETOOTH device cannot be heard on this system.**

- Increase the volume on your BLUETOOTH device first, then adjust the volume using the volume +/- buttons.

### **There is severe hum, noise, or distorted sound.**

- If there are obstacles between the system and your BLUETOOTH device, remove or avoid the obstacles.
- If there is equipment that generates electromagnetic radiation, such as a wireless LAN, other BLUETOOTH device, or a microwave oven nearby, move them away.
- Turn down the volume of the connected BLUETOOTH device.

## **Party Chain and speaker add function**

---


### **Party Chain function cannot be activated.**

- Check the connections (page 18).
- Make sure the audio cords are connected correctly.
- Select the function other than the Audio In function (page 20).

### **Party Chain function does not work properly.**

- Turn off the system. Then, turn it back on again to activate the Party Chain function.

## Unable to connect a BLUETOOTH device with the system in the speaker add function.

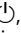

- After connecting two GTK-XB5 systems, perform the pairing procedure between a BLUETOOTH device and the system where the  (BLUETOOTH) indicator is flashing. Then perform the BLUETOOTH connection.

### Resetting the system

If the system still does not operate properly, reset the system to factory default settings.

#### 1 Disconnect and reconnect the AC power cord, and then turn on the system.

#### 2 Hold down FUNCTION – PAIRING and the volume – button for more than 5 seconds.

After the ,  (BLUETOOTH), and AUDIO IN indicators on the unit flash for more than 3 seconds, all user-configured settings, such as the pairing registration information, are reset to factory default settings.

#### Note

If you reset the system, the system may not be able to connect your BLUETOOTH device. In this case, erase the pairing information on the BLUETOOTH device, and then perform the pairing operation again (page 10).

## Precautions

### On safety

- Completely disconnect the AC power cord (mains lead) from the wall outlet (mains) if it is not going to be used for an extended period of time. When unplugging the unit, always grip the plug. Never pull the cord itself.
- Should any solid object or liquid get into the system, unplug the system, and have it checked by qualified personnel before operating it again.
- AC power cord must be changed only at the qualified service shop.

### On placement

- Do not place the system in an inclined position or in locations that are extremely hot, cold, dusty, dirty, or humid or lacking adequate ventilation, or subject to vibration, direct sunlight or a bright light.
- Be careful when placing the system on surfaces that have been specially treated (for example, wax, oil, polish) as staining or discoloration of the surface may result.
- Make sure not to splash water on the unit. This unit is not waterproof.

### On heat buildup

- Heat buildup on the system during operation is normal and is not a cause for alarm.
- Do not touch the cabinet if it has been used continuously at a high volume because the cabinet may have become hot.
- Do not obstruct the ventilation holes.

### On the speaker system

The built-in speaker system is not magnetically shielded, and the picture on nearby TV sets may become magnetically distorted. In this situation, turn off the TV, wait 15 to 30 minutes, and turn it back on. If there is no improvement, move the system far away from the TV.

### Cleaning the cabinet

Clean this system with a soft cloth slightly moistened with a mild detergent solution. Do not use any type of abrasive pad, scouring powder, or solvent, such as thinner, benzene, or alcohol.

## On BLUETOOTH Communication

- BLUETOOTH devices should be used within approximately 10 meters (33 feet) (unobstructed distance) of each other. The effective communication range may become shorter under the following conditions.
  - When a person, metal object, wall or other obstruction is between the devices with a BLUETOOTH connection
  - Locations where a wireless LAN is installed
  - Around microwave ovens that are in use
  - Locations where other electromagnetic waves are generated
- BLUETOOTH devices and wireless LAN (IEEE 802.11b/g) equipment use the same frequency band (2.4 GHz). When using your BLUETOOTH device near a device with wireless LAN capability, electromagnetic interference may occur. This could result in lower data transfer rates, noise, or inability to connect. If this happens, try the following remedies:
  - Use this system at least 10 meters (33 feet) away from the wireless LAN equipment.
  - Turn off the power to the wireless LAN equipment when using your BLUETOOTH device within 10 meters (33 feet).
  - Use this system and BLUETOOTH device as closer to each other as possible.
- The radio waves broadcast by this system may interfere with the operation of some medical devices. Since this interference may result in malfunction, always turn off the power on this system and BLUETOOTH device in the following locations:
  - In hospitals, on trains, in airplanes, at gas stations, and any place where flammable gases may be present
  - Near automatic doors or fire alarms
- This system supports security functions that comply with BLUETOOTH specifications to ensure secure connections during communication using BLUETOOTH technology. However, this security may be insufficient depending on the setting contents and other factors, so always be careful when performing communication using BLUETOOTH technology.
- Sony cannot be held liable in any way for damages or other loss resulting from information leaks during communication using BLUETOOTH technology.
- BLUETOOTH communication is not necessarily guaranteed with all BLUETOOTH devices that have the same profile as this system.
- BLUETOOTH devices connected with this system must comply with the BLUETOOTH specification prescribed by the Bluetooth SIG, Inc., and must be certified to comply. However, even when a device complies with the BLUETOOTH specification, there may be cases where the characteristics or specifications of the BLUETOOTH device make it impossible to connect, or may result in different control methods, display or operation.
- Noise may occur or the audio may cut off depending on the BLUETOOTH device connected with this system, the communications environment, or surrounding conditions.

---

# Specifications

## Speaker section

Tweeter:

50 mm (2 in) × 2, cone type

Woofer:

130 mm (5 1/8 in) × 2, cone type

## Inputs

AUDIO/PARTY CHAIN IN L/R:

Voltage 2 V, impedance 10 kilohms

## Outputs

AUDIO/PARTY CHAIN OUT L/R:

Voltage 2 V, impedance 600 ohms

## BLUETOOTH section

Communication system:

BLUETOOTH Standard version 3.0

Output:

BLUETOOTH Standard Power Class 2

Maximum communication range:

Line of sight approx. 10 m (33 feet)<sup>1)</sup>

Frequency band:

2.4 GHz band (2.4000 GHz –  
2.4835 GHz)

Modulation method:

FHSS (Freq Hopping Spread  
Spectrum)

Compatible BLUETOOTH profiles<sup>2)</sup>:

A2DP (Advanced Audio Distribution  
Profile)

AVRCP (Audio Video Remote Control  
Profile)

SPP (Serial Port Profile)

Supported codecs:

SBC (Sub Band Codec)

AAC (Advanced Audio Coding)

LDAC

<sup>1)</sup> The actual range will vary depending on factors such as obstacles between devices, magnetic fields around a microwave oven, static electricity, reception sensitivity, antenna's performance, operating system, software application, etc.

<sup>2)</sup> BLUETOOTH standard profiles indicate the purpose of BLUETOOTH communication between devices.

## General

Power requirements:

North American model: AC 120 V,  
60 Hz

Other models: AC 120 V – 240 V,  
50/60 Hz

Power consumption:

30 W

Standby power consumption:

When BLUETOOTH standby mode is  
set to off: 0.5 W (eco mode)

When BLUETOOTH standby mode is  
set to on: 2.8 W (all wireless network  
ports on)

Dimensions (W/H/D) (Approx.):

262 mm × 524 mm × 273 mm  
(10 3/8 in × 20 3/4 in × 10 3/4 in)

Mass (Approx.):

7 kg (15 lb 7 oz)

Quantity of the system:

1 piece

Supplied accessories:

AC power cord (1)

AC plug adaptor\* (1) (supplied only  
for certain areas)

\* This plug adaptor is not for the use  
in Chile, Paraguay and Uruguay. Use  
this plug adaptor in the countries  
where it is necessary.

Design and specifications are subject to  
change without notice.

---

## License and Trademark Notice

- The BLUETOOTH® word mark and logos are registered trademarks owned by Bluetooth SIG, Inc. and any use of such marks by Sony Corporation is under license. Other trademarks and trade names are those of their respective owners.
- The N-Mark is a trademark or registered trademark of NFC Forum, Inc. in the United States and in other countries.
- Google Play and Android are trademarks of Google Inc.
- LDAC™ and LDAC logo are trademarks of Sony Corporation.
- Apple, the Apple logo, iPhone, and iPod touch are trademarks of Apple Inc., registered in the U.S. and other countries. App Store is a service mark of Apple Inc.
- “Made for iPod” and “Made for iPhone” mean that an electronic accessory has been designed to connect specifically to iPod or iPhone, respectively, and has been certified by the developer to meet Apple performance standards. Apple is not responsible for the operation of this device or its compliance with safety and regulatory standards. Please note that the use of this accessory with iPod or iPhone may affect wireless performance.
- WALKMAN and WALKMAN logo are registered trademarks of Sony Corporation.
- All other trademarks and registered trademarks are of their respective holders. In this manual, ™ and ® marks are not specified.





<http://www.sony.net/>

