



All for better networking.

## PoE15F

10/100Mbps PoE Injector

# PoE15F

## 10/100Mbps PoE Injector

---

### Products Description

The PoE injector PoE15F can realize synchronous delivery of device network data and power via one Ethernet cable (Cat.5 or better). The output power of per port is up to 15W, which can serve as an outlet for a PoE device (powering via RJ45 port). You can connect PSE15F to an IEEE 802.3af compliant PD, such as wireless AP, IP camera, IP phone, etc. In a sense, it is a good choice for you to reduce the installation cost and improve the network performance.



## Key Feature

---

- Delivers power and data through one Ethernet cable for easy network extension.
- Compatible with IEEE 802.3af/at compliant powered devices.
- PoE Port Delivers power up to 100 meters.
- Plug and Play, no configuration required.

## Product Features

---



### Power over Ethernet

Support IEEE802.3af/at standard, automatically detect and identify powered devices compliant with the standard and provide power supply, single-port power supply up to 15.4W.



### Power Supply Distance Extension

The power supply distance of standard CAT 5E and CAT 6E cable is up to 100m. It can supply power for the PD remotely, which expands the range of PoE applications, improves wiring efficiency, and better for project installation works.

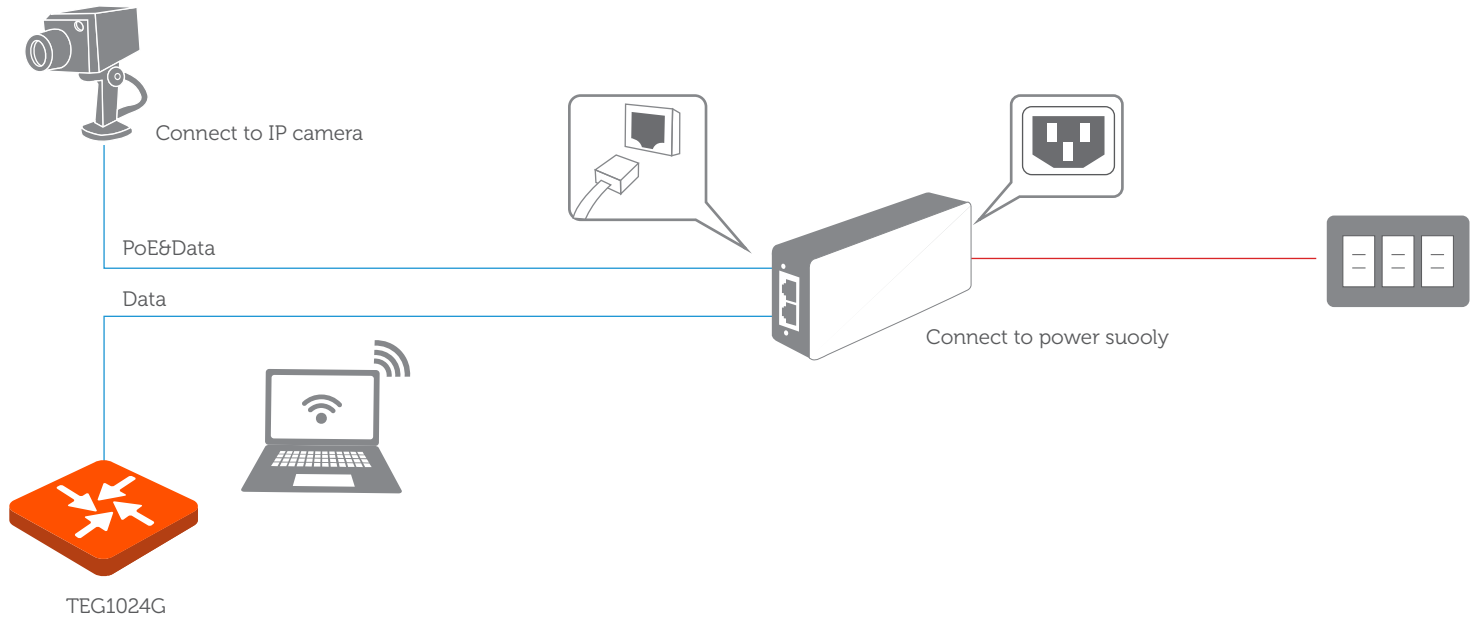


### Extreme Speed Transmission

10/ 100Mbps self-adaptive RJ45 port, extreme speed and high efficient data transmission, support link-speed forwarding and MDI / MDIX auto-flip function, plug and play.

# Application

---



Product Model		PoE15F
Hardware Features		
Standards&Protocols	IEEE802.3、 IEEE802.3u、 IEEE802.3af	
Indicators	Link/Act , PoE Status	
Interfaces	1 10/100Mbps RJ45 Port(Data/PoE) 1 10/100Mbps RJ45 Port(Data)	
Input Voltage	AC: 100—240V~ 50/60Hz	
Ouput Voltage	DC: 48V/0.3A(max)	
Power consumption	Power Supply: 15.4W (max)	
PoE Supply	PoE Port supports power( maximum power for PoE port is 15.4W), PoE power type is mid-span( 45+, 78- line pair)	
Dimensions (W x D x H)	84.5mm*44mm*29.8mm	
Environment	Operating Temperature: 0°C~40°C (32°F~104°F) Storage Temperature: -40°C~70°C (-40°F~158°F) Operating Humidity: 10%~90% non-condensing Storage Humidity: 5%~90% non-condensing	
Certification	FCC、 CE 、 RoHS	

[www.tendacn.com/en/](http://www.tendacn.com/en/)

**SHENZHEN TENDA TECHNOLOGY CO.,LTD.**

Tenda Technology Bldg.Int' IE-City,  
#1001 Zhong Shan Yuan Rd.,Nanshan District,Shenzhen China.

E-mail:[support@tenda.com.cn](mailto:support@tenda.com.cn)  
Tel: +86-755-2765 7098  
Fax: +86-755-2765 7178  
PC: 518055

