

Kraftform Kompakt 60 Torque 1.2 - 3.0 Nm, 17 pieces

Kraftform Kompakt 60, 62



EAN:	4013288169624	Size:	180x150x55 mm
Part number:	05059293001	Weight:	568 g
Article number:	KK 60 Torque	Country of origin:	CZ
		Customs tariff number:	82079030



- Adjustable Kraftform torque screwdriver with Rapidaptor quick-release chuck
- Multi-component Kraftform handle for fast and ergonomic screwdriving
- Rapidaptor technology for rapid bit change
- Suitable for manual and power tool operations
- Practical pouch for tidy storage

Pouch with bits in a length of 89 mm. Includes torque screwdriver 7441 with Rapidaptor quick-release chuck and multi-component Kraftform handle for low-fatigue working. Suitable for manual and power tool operations. 17-piece; compact handle/interchangeable blade system for torque-controlled tightening. Includes torque holder 7441, settings from 1.2 to 3.0 Nm. Adjustable in 0.10 Nm steps. Simple setting of the required torque value without any special tools. Easy-to-read scale value. Rapidaptor quick-release technology for rapid bit change. Unlimited torque to loosen seized screws. Multi-component Kraftform handle with hard and soft zones for high working speeds, whilst being easy on the hand. Includes 16 bits with a length of 89 mm and a practical pouch for tidy storage.

Web link

http://products.wera.de/en/kraftform_kompakt_kraftform_kompakt_60_62_kk_60_torque.html

Wera - KK 60 Torque
05059293001 - 4013288169624

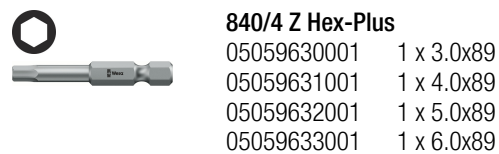
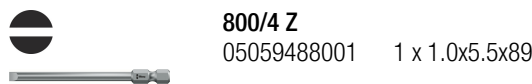
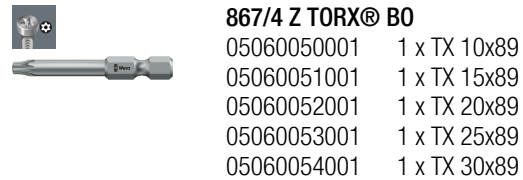
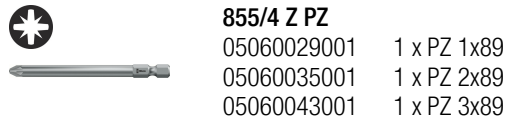
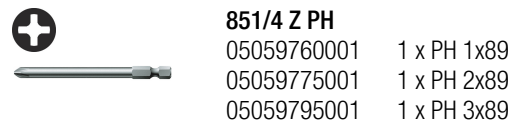
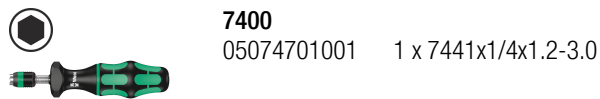
Wera Werkzeuge GmbH
Korzter Straße 21-25
D-42349 Wuppertal
Tel: +49 (0)2 02 / 40 45-0
E-Mail: info@wera.de

Kraftform Kompakt 60 Torque 1.2 - 3.0 Nm, 17 pieces



Kraftform Kompakt 60, 62

Set contents:



Handle/interchangeable blade system



Many screws – particularly in assembly and maintenance applications – have to be tightened with controlled torque to ensure the dependability of the screw connection and/or to avoid damage to the screw or work piece. Wera's adjustable torque screwdrivers are the ideal tool for this. They feature a torque range of 0.3 Nm to 8.8 Nm, two different handles, measurement accuracy of $\pm 6\%$ and Rapidaptor technology for rapid bit change.



The handle/interchangeable blade system allows rapid exchange of the blades required for a wide range of applications.

Adjustable Kraftform torque screwdriver with Rapidaptor quick-release chuck



Simple setting of the required torque by hand. Easy-to-read scale value. Measurement accuracy is $\pm 6\%$ in accordance with the standard EN ISO 6789. Distinctly audible and noticeable excess-load signal when the pre-set torque is reached.

Manual and power tool operations



The sets come with a Kraftform handle, quick-release chuck and bits for manual and power tool operations.

Web link

http://products.wera.de/en/kraftform_kompakt_kraftform_kompakt_60_62_kk_60_torque.html

Wera - KK 60 Torque
05059293001 - 4013288169624

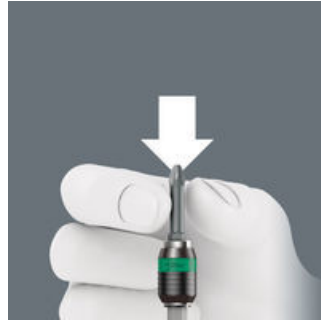
Wera Werkzeuge GmbH
Korzter Straße 21-25
D-42349 Wuppertal
Tel: +49 (0)2 02 / 40 45-0
E-Mail: info@wera.de

Chuck-all



The Rapidaptor quick-release chucks hold 1/4" DIN ISO 1173-C 6,3 and E 6,3 as well as Wera series 1 and 4 bits.

Rapid-in and self-lock



The bit can be pushed into the adaptor without moving the sleeve. The lock is activated automatically as soon as the bit is applied to the screw. Bits are held securely and wobble-free.

Storage and transport



The tools can be stored and carried in a robust belt pouch, keeping them always to hand.

Prevents hand injuries



The outstanding design of the Kraftform handle that fits perfectly into the hand prevents hand injuries such as blisters and calluses.

Web link

http://products.wera.de/en/kraftform_kompakt_kraftform_kompakt_60_62_kk_60_torque.html

Wera - KK 60 Torque
05059293001 - 4013288169624

Wera Werkzeuge GmbH
Korzter Straße 21-25
D-42349 Wuppertal
Tel: +49 (0)2 02 / 40 45-0
E-Mail: info@wera.de