



**EAN:** 4013288165695  
**Part number:** 05073675001  
**Article number:** Kraftform Micro 12  
Universal 1

**Size:** 245x115x55 mm  
**Weight:** 356 g  
**Country of origin:** CZ  
**Customs tariff number:** 82054000

- Anti-roll feature and swivel cap for rapid twisting
- Kraftform Micro handle for fast and ergonomic working
- E.g. for electricians, opticians, precision mechanics, jewellers or IT hardware fitters
- The refined screwdriver for electronics technicians
- Kraftform Micro set in a robust pouch

Wera Micro screwdriver set for precision mechanical work. Rapid twisting results from fixing the hand on the head and using the fast-turning zone just below. This makes time-consuming grip adjustments unnecessary. Storage and transport in a robust belt pouch – so the tool is always at hand.



**Web link**

[http://products.wera.de/en/innovations\\_and\\_spring\\_summer\\_campaign\\_2018\\_kraftform\\_micro\\_12\\_universal\\_1.html](http://products.wera.de/en/innovations_and_spring_summer_campaign_2018_kraftform_micro_12_universal_1.html)

Wera - Kraftform Micro 12 Universal 1  
05073675001 - 4013288165695

Wera Werkzeuge GmbH  
Korzter Straße 21-25  
D-42349 Wuppertal  
Tel: +49 (0)2 02 / 40 45-0  
E-Mail: [info@wera.de](mailto:info@wera.de)

Set contents:



**2050 PH Micro**  
 05118020001<sup>1)</sup> 1 x PH 00x60  
 05118022001<sup>2)</sup> 1 x PH 0x60

1) Optimised for Asian PH screws  
 2) Size 0 modified according to JClS 0 (Japanese Camera Industrial Standard)



**2067 TORX® HF**  
 05118181001 1 x TX 5x40  
 05118182001 1 x TX 6x40



**2035 Micro**  
 05118002001 1 x 0.23x1.5x40  
 05118004001 1 x 0.30x1.8x60  
 05118006001 1 x 0.40x2.0x60  
 05118008001 1 x 0.40x2.5x80  
 05118010001 1 x 0.50x3.0x80



**2054 Micro**  
 05118062001 1 x 0.9x40  
 05118066001 1 x 1.5x60  
 05118068001 1 x 2x60

**Kraftform Micro Handle**



Screwdriving jobs in electrical and precision engineering applications are often tedious and time-consuming. We learned from users what is important for them: working speeds, torque, precision – and we then focused particularly on these issues.



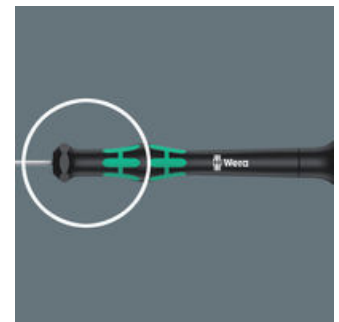
Multi-component screwdriver handle for ergonomic working.

**The refined screwdriver for electronics technicians**



The Kraftform Micro, with its three zones and their specific arrangement, satisfies these requirements perfectly. The free-turning cap that provides support for the hand works with these advantages, enabling quick and easy precision work.

**The precision zone**



The precision zone directly above the blade gives the user a better feel for the right rotation angle during fine adjustment work.

**Web link**

[http://products.wera.de/en/innovations\\_and\\_spring\\_summer\\_campaign\\_2018\\_kraftform\\_micro\\_12\\_universal\\_1.html](http://products.wera.de/en/innovations_and_spring_summer_campaign_2018_kraftform_micro_12_universal_1.html)

Wera - Kraftform Micro 12 Universal 1  
 05073675001 - 4013288165695

Wera Werkzeuge GmbH  
 Korzter Straße 21-25  
 D-42349 Wuppertal  
 Tel: +49 (0)2 02 / 40 45-0  
 E-Mail: info@wera.de

**The power zone**



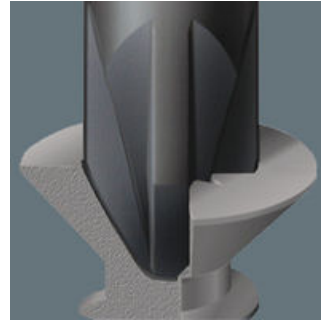
The power zone has integrated soft zones near the blade tip to ensure high torque transfer for loosening or tightening screws without losing contact with the screw.

**The fast-turning zone**



The fast-turning zone just below the rotating cap allows rapid twisting.

**Wera Black Point tip**



The Wera Black Point tip and a refined hardening process ensure long service life of the tip, improved corrosion protection and an exact fit.

**Applications**



Indispensable for many users, including electronics technicians, opticians, precision engineers, jewellers, EDP hardware fitters and model-makers.

**Web link**

[http://products.wera.de/en/innovations\\_and\\_spring\\_summer\\_campaign\\_2018\\_kraftform\\_micro\\_12\\_universal\\_1.html](http://products.wera.de/en/innovations_and_spring_summer_campaign_2018_kraftform_micro_12_universal_1.html)

Wera - Kraftform Micro 12 Universal 1  
05073675001 - 4013288165695

Wera Werkzeuge GmbH  
Korzter Straße 21-25  
D-42349 Wuppertal  
Tel: +49 (0)2 02 / 40 45-0  
E-Mail: [info@wera.de](mailto:info@wera.de)