

Series Kraftform Micro



EAN: 4013288108425
Part number: 05117991001
Article number: 2035 Micro

Size: 137x13x13 mm
Weight: 10 g
Country of origin: CZ
Customs tariff number: 82054000



- Kraftform Micro screwdriver for slotted screws
- Multi-component Kraftform Micro handle for fast and ergonomic screwdriving
- Anti-roll feature and swivel cap for rapid twisting
- The Wera Black Point tip offers an exact fit and optimum corrosion protection
- E.g. for electricians, opticians, precision mechanics, jewellers or IT hardware fitters

High quality Wera Micro screwdriver for precision mechanical jobs. Rapid twisting results from fixing the hand on the head and using the fast-turning zone just below. This makes time-consuming grip adjustments unnecessary. Power zones with integrated soft sections ensure the transfer of high loosening and tightening torque; a precision zone for the right rotation angle during fine adjustment work. The Black Point tip offers optimised corrosion protection and an exact fit.

Web link

http://products.wera.de/en/screwdrivers_series_kraftform_micro_2035_micro.html

Wera - 2035 Micro
05117991001 - 4013288108425

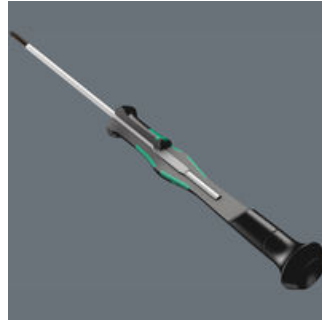
Wera Werkzeuge GmbH
Korzter Straße 21-25
D-42349 Wuppertal
Tel: +49 (0)2 02 / 40 45-0
E-Mail: info@wera.de

Series Kraftform Micro

Kraftform Micro Handle



Screwdriving jobs in electrical and precision engineering applications are often tedious and time-consuming. We learned from users what is important for them: working speeds, torque, precision – and we then focused particularly on these issues.



Multi-component screwdriver handle for ergonomic working.

The refined screwdriver for electronics technicians



The Kraftform Micro, with its three zones and their specific arrangement, satisfies these requirements perfectly. The free-turning cap that provides support for the hand works with these advantages, enabling quick and easy precision work.

The precision zone



The precision zone directly above the blade gives the user a better feel for the right rotation angle during fine adjustment work.

The power zone



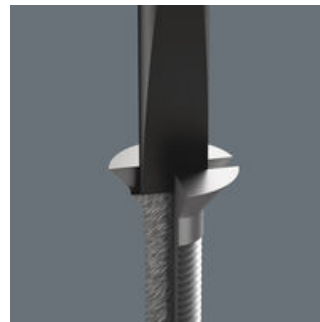
The power zone has integrated soft zones near the blade tip to ensure high torque transfer for loosening or tightening screws without losing contact with the screw.

The fast-turning zone



The fast-turning zone just below the rotating cap allows rapid twisting.

Wera Black Point tip



The Wera Black Point tip and a refined hardening process ensure long service life of the tip, improved corrosion protection and an exact fit.

Applications



Indispensable for many users, including electronics technicians, opticians, precision engineers, jewellers, EDP hardware fitters and model-makers.

Web link








http://products.wera.de/en/screwdrivers_series_kraftform_micro_2035_micro.html

Wera - 2035 Micro
05117991001 - 4013288108425

Wera Werkzeuge GmbH
Korzter Straße 21-25
D-42349 Wuppertal
Tel: +49 (0)2 02 / 40 45-0
E-Mail: info@wera.de

Series Kraftform Micro

Further versions in this product family:

							
	mm	mm	mm	mm	mm	inch	inch
05117990001	0.16	0.8	40	97	2.0	1/32	1 9/16
05117991001	0.18	1.0	40	97	2.0	0.04	1 9/16
05117992001	0.20	1.2	40	97	2.0	0.05	1 9/16
05118002001	0.23	1.5	40	97	2.0	1/16	1 9/16
05118003001	0.23	1.5	60	97	2.0	1/16	2 3/8
05118000001	0.25	1.2	40	97	2.0	0.05	1 9/16
05117993001	0.30	1.8	40	97	2.0	0.07	1 9/16
05118004001	0.30	1.8	60	97	2.0	0.07	2 3/8
05117997001	0.35	2.5	40	97	2.5	0.07	1 9/16
05118017001	0.30	2.0	50	97	2.0	0.07	2
05118005001	0.40	2.0	40	97	2.5	5/64	1 9/16
05118006001	0.40	2.0	60	97	2.5	5/64	2 3/8
05118007001	0.40	2.0	100	97	2.5	5/64	4
05117994001	0.40	2.5	50	97	2.5	3/32	2
05118008001	0.40	2.5	80	97	2.5	3/32	3 1/8
05117995001	0.50	3.0	50	97	3.0	1/8	2
05118010001	0.50	3.0	80	97	3.0	1/8	3 1/8
05118012001	0.60	3.5	80	97	4.0	9/64	3 1/8
05118014001	0.80	4.0	80	97	4.0	5/32	3 1/8

Web link

http://products.wera.de/en/screwdrivers_series_kraftform_micro_2035_micro.html

Wera - 2035 Micro

05117991001 - 4013288108425

Wera Werkzeuge GmbH

Korzter Straße 21-25

D-42349 Wuppertal

Tel: +49 (0)2 02 / 40 45-0

E-Mail: info@wera.de