

8100 SA 12 HF Zyklop Metal Ratchet Set with switch lever, 1/4" drive, metric, 13 pieces

The Zyklop Metal Ratchets Switch, 1/4"



EAN: 4013288190987
Part number: 05003756001
Article number: 8100 SA 12 HF

Size: 196x93x48 mm
Weight: 557 g
Country of origin: CZ
Customs tariff number: 82041100



Web link

http://products.wera.de/en/innovations_and_spring_summer_campaign_2018_8100_sa_12_hf.html

Wera - 8100 SA 12 HF
05003756001 - 4013288190987

Wera Werkzeuge GmbH
Korzter Straße 21-25
D-42349 Wuppertal
Tel: +49 (0)2 02 / 40 45-0
E-Mail: info@wera.de

8100 SA 12 HF Zyklop Metal Ratchet Set with switch lever, 1/4" drive, metric, 13 pieces

The Zyklop Metal Ratchets Switch, 1/4"



- 13-piece ratchet set in robust textile box
- Extremely slim ratchet with long lever
- Sockets with holding function for screws/bolts/nuts
- Take it easy tool finder with colour coding according to sizes
- Suitable for docking with the Wera 2go system

Incredibly compact set arrangement with many tools in a minimum of space. A completely new ratchet set feeling thanks to the unique textile boxes that are very robust and durable. They can be positioned upright for tidy storage on the workshop shelf. Additional surface protection due to textile outer material. Low weight and volume for simpler mobility. "Take it easy" Tool Finder with colour coding according to sizes.

Web link

http://products.wera.de/en/innovations_and_spring_summer_campaign_2018_8100_sa_12_hf.html

Wera - 8100 SA 12 HF
05003756001 - 4013288190987

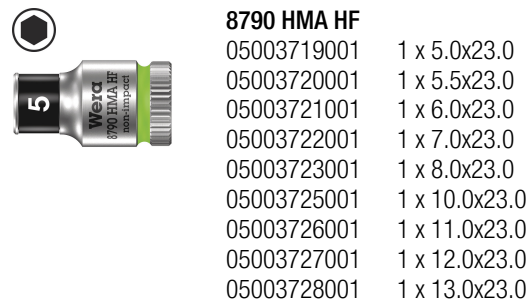
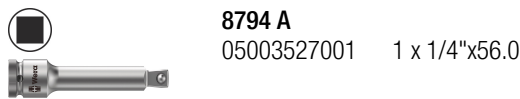
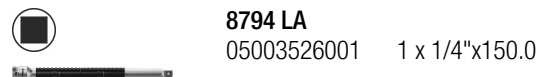
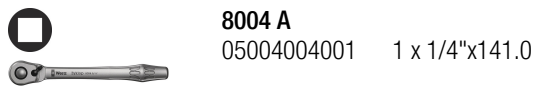
Wera Werkzeuge GmbH
Korzter Straße 21-25
D-42349 Wuppertal
Tel: +49 (0)2 02 / 40 45-0
E-Mail: info@wera.de

8100 SA 12 HF Zyklop Metal Ratchet Set with switch lever, 1/4" drive, metric, 13 pieces

The Zyklop Metal Ratchets Switch, 1/4"



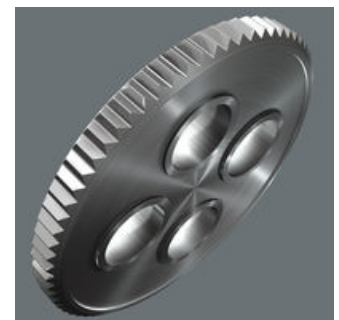
Set contents:



Zyklop Metal Switch

Reversible

Small return angle



Due to the ever-more confined working environment, space is becoming more and more an issue for the application of ratchets. Our product developers therefore intensively occupied themselves with the issue of confined working spaces, and Wera has now solved this problem. The extremely slim and robust Zyklop Metal ratchet with a long lever was what emerged. When the socket must not get lost and a coincidental change of direction has to be avoided at all cost, the Zyklop Metal Push is the correct choice.

Due to the ever-more confined working environment, space is becoming more and more an issue for the application of ratchets. Our product developers therefore intensively occupied themselves with the issue of confined working spaces, and Wera has now solved this problem. The extremely slim and robust Zyklop Metal ratchet with a long lever was what emerged. When the change in direction needs to be quick, the Zyklop Metal Switch ratchet is the right tool. When the socket must not get lost and a coincidental change of direction has to be avoided at all cost, the Zyklop Metal Push is the correct choice.

Switch lever for convenient change of direction.

Fine-pitched with 72 teeth for a return angle of only 5°

Web link

http://products.wera.de/en/innovations_and_spring_summer_campaign_2018_8100_sa_12_hf.html

Wera - 8100 SA 12 HF
05003756001 - 4013288190987

Wera Werkzeuge GmbH
Korzter Straße 21-25
D-42349 Wuppertal
Tel: +49 (0)2 02 / 40 45-0
E-Mail: info@wera.de

8100 SA 12 HF Zyklop Metal Ratchet Set with switch lever, 1/4" drive, metric, 13 pieces

The Zyklop Metal Ratchets Switch, 1/4"



Sockets with retaining function for hexagon headed bolts, screws and nuts



The clamping of the screw is achieved by a twin spring loaded ball retention system. The tubing is effectively protected against mechanical wear and tear by a steel ring. The holding function is especially helpful in confined, hard-to-reach spaces, where there is no room for a second hand to secure the screw.

Secure hold and easy removal



The all new smooth turning mechanism guarantees both secure and rattle-free storage, yet allows easy removal of the tool.

Take it easy tool finder system



Take it easy tool finder system - with profile and size colour-coding for quick and easy tool selection. Colour-coded system for hexagon drive screws (L-Keys, Zyklop bit sockets), external hex drive screws and nuts (Joker wrenches, Zyklop sockets and Zyklop bit sockets with holding function), and TORX® drive screws (L-Keys, Zyklop bit sockets).

The Zyklop Ratchet Metal Switch



Extremely slim. Long leverage. With switch lever.

Web link

http://products.wera.de/en/innovations_and_spring_summer_campaign_2018_8100_sa_12_hf.html

Wera - 8100 SA 12 HF
05003756001 - 4013288190987

Wera Werkzeuge GmbH
Korzterter Straße 21-25
D-42349 Wuppertal
Tel: +49 (0)2 02 / 40 45-0
E-Mail: info@wera.de