

Kraftform Kompakt Zyklus Speed, 26 pieces

The Zyklus Speed Ratchets, 1/4"



EAN:	4013288155313	Size:	195x130x55 mm
Part number:	05051045001	Weight:	756 g
Article number:	Kraftform Kompakt Zyklus	Country of origin:	CZ
		Customs tariff number:	82041100



- Combines five different types of a ratchet in one
- Flywheel design and easy-to-grip free-turning sleeve for very high working speeds
- Can also be used as a screwdriver
- Fine-toothing for small return angle
- Pouch for belt attachment

Web link

http://products.wera.de/en/zyklus_ratchets_and_accessories_the_zyklus_ratchets_the_zyklus_ratchets_1_4_the_zyklus_speed_ratchets_1_4_kraftform_kompakt_zyklus.html

Wera - Kraftform Kompakt Zyklus
05051045001 - 4013288155313

Wera Werkzeuge GmbH
Korzter Straße 21-25
D-42349 Wuppertal
Tel: +49 (0)2 02 / 40 45-0
E-Mail: info@wera.de

The Zyklus Speed Ratchets, 1/4"

Ratchet and screws in a Kraftform Kompakt format; including a Zyklus ratchet for incredibly high screwdriving speeds. Combines five different types of ratchet in one. Flywheel design and easy-to-grip, free-turning sleeve for fast working. Freely pivoting ratchet head; predefined locking at 0° and 90° to the left and right as well as 15° from 90° inwards; can be used as a conventional screwdriver in its 0° position. Simple push button release; left/right switchover, fine-toothing, small return angle of 5°. Multi-component Kraftform handle for low-fatigue working. 26-piece, in a pouch for belt attachment: 1 Zyklus ratchet with 1/4" drive, 7 Zyklus sockets (metric), 1 Zyklus extension (long) with free-turning sleeve, 1 adaptor, 16 bits in a length of 50 mm.

Web link

http://products.wera.de/en/zyklus_ratchets_and_accessories_the_zyklus_ratchets_the_zyklus_ratchets_1_4_the_zyklus_speed_ratchets_1_4_kraftform_kompakt_zyklus.html

Wera - Kraftform Kompakt Zyklus
05051045001 - 4013288155313

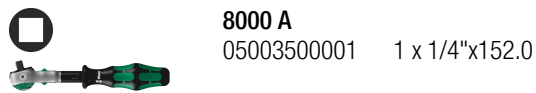
Wera Werkzeuge GmbH
Korzter Straße 21-25
D-42349 Wuppertal
Tel: +49 (0)2 02 / 40 45-0
E-Mail: info@wera.de

Kraftform Kompakt Zyklus Speed, 26 pieces

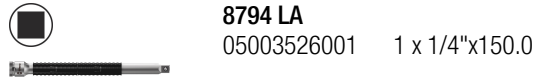


The Zyklus Speed Ratchets, 1/4"

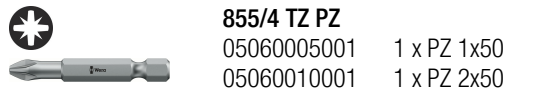
Set contents:



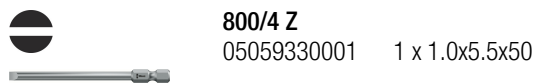
8000 A
05003500001 1 x 1/4"x152.0



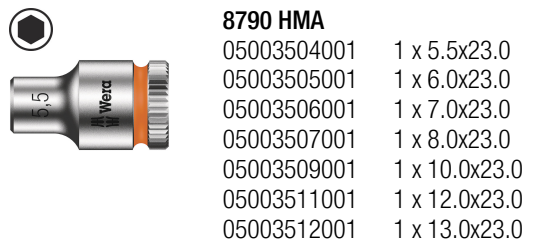
8794 LA
05003526001 1 x 1/4"x150.0



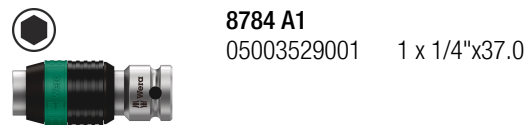
855/4 TZ PZ
05060005001 1 x PZ 1x50
05060010001 1 x PZ 2x50



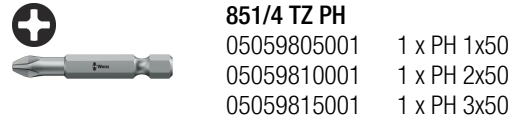
800/4 Z
05059330001 1 x 1.0x5.5x50



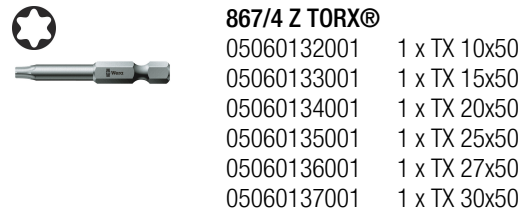
8790 HMA
05003504001 1 x 5.5x23.0
05003505001 1 x 6.0x23.0
05003506001 1 x 7.0x23.0
05003507001 1 x 8.0x23.0
05003509001 1 x 10.0x23.0
05003511001 1 x 12.0x23.0
05003512001 1 x 13.0x23.0



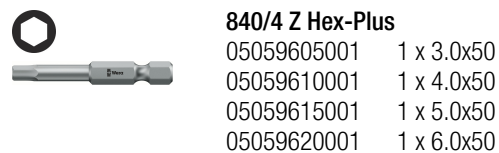
8784 A1
05003529001 1 x 1/4"x37.0



851/4 TZ PH
05059805001 1 x PH 1x50
05059810001 1 x PH 2x50
05059815001 1 x PH 3x50



867/4 Z TORX®
05060132001 1 x TX 10x50
05060133001 1 x TX 15x50
05060134001 1 x TX 20x50
05060135001 1 x TX 25x50
05060136001 1 x TX 27x50
05060137001 1 x TX 30x50



840/4 Z Hex-Plus
05059605001 1 x 3.0x50
05059610001 1 x 4.0x50
05059615001 1 x 5.0x50
05059620001 1 x 6.0x50

Web link

http://products.wera.de/en/zyklus_ratchets_and_accessories_the_zyklus_ratchets_the_zyklus_ratchets_1_4_the_zyklus_speed_ratchets_1_4_kraftform_kompakt_zyklus.html

Wera - Kraftform Kompakt Zyklus
05051045001 - 4013288155313

Wera Werkzeuge GmbH
Korzter Straße 21-25
D-42349 Wuppertal
Tel: +49 (0)2 02 / 40 45-0
E-Mail: info@wera.de

Zyklop "6 in 1"



1. Fine-tooth ratchet 2. Flex-head ratchet 3. Angle ratchet 4. Quick-release ratchet 5. Power ratchet 6. Screwdriver

Pivots freely



The ratchet head pivots freely and can be locked into any defined position by using the slide switch that is positioned on either side. It is even possible to work in very confined and difficult-to-access areas with enhanced hand clearance. The predefined locking at 0°, 15° and 90°, both to the right and left, ensure safe working without any slipping of the ratchet head.

Fast movers



The Zyklop Speed ratchets are really fast movers. The gyrating mass design means that screwdriving is accelerated. The rotation-symmetric structure of the Kraftform handle and the free-turning sleeve reinforce this rapid twisting process, particularly when the ratchet does not engage due to too little resistance in the thread.

Simple direction change



All Zyklop Speed ratchets feature a thumbwheel that can be used to quickly and easily switch between clockwise and anticlockwise rotation, at any position. No complicated handling, no loss of time!

Low return angle



The reversible ratchet with 72 fine-pitched teeth has a low return angle of only 5°. This short stroke allows fast and precise work in all types of installation.

Screwdriver



The ratchet can be used as a conventional screwdriver in the 0° position by attaching a bitholding adaptor and a bit.

Ball lock



The ball lock holds the sockets and attachments securely, ensuring safe working. A changeover into any predefined position is completed by simply pressing the release button – this is even the case in the 90° position.

Web link

http://products.wera.de/en/zyklop_ratchets_and_accessories_the_zyklop_ratchets_the_zyklop_ratchets_1_4_the_zyklop_speed_ratchets_1_4_kraftform_kompakt_zyklop.html

Wera - Kraftform Kompakt Zyklop
05051045001 - 4013288155313

Wera Werkzeuge GmbH
Korzter Straße 21-25
D-42349 Wuppertal
Tel: +49 (0)2 02 / 40 45-0
E-Mail: info@wera.de