

# 86 05 250

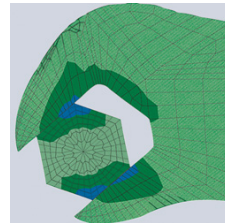
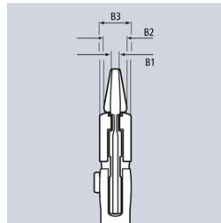
## Pliers Wrench pliers and a wrench in a single tool



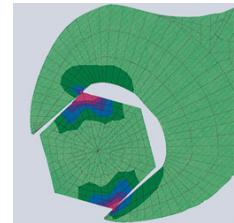
- Replaces the need for sets of metric and imperial spanners
- Smooth jaws for damage free installation of plated fittings - working directly on chrome!
- Adjustable tightening tool
- Also excellent for gripping, holding, pressing and bending workpieces
- Push the button for adjustment on the workpiece
- Zero backlash jaw pressure prevents damage to edges of sensitive components
- Parallel jaws give a more solid grip; its design allows flexible adjustment of all widths up to the specified maximum size
- Reliable catching of the hinge bolt: no unintentional shifting
- The ratchet type principle allows quick and easy tightening and release of all bolted connections
- Lever transmission greater than 10 : 1 for strong gripping power
- Chrome vanadium electric steel, forged, oil-hardened

The smooth jaws grip all parallel surfaces in the capacity range with a high degree of pressure if necessary and open up almost unlimited application possibilities for the pliers wrench: e.g. for tightening locknuts, exerting pressure to activate the adhesive power of contact adhesives, edge breaking in tile work, snapping cable ties, utilisation as a small vice.

<b>Article No.</b>	86 05 250
<b>EAN</b>	4003773047841
<b>Pliers</b>	chrome plated
<b>Handles</b>	with multi-component grips
<b>B2 mm</b>	8,0
<b>B3 mm</b>	14,0
<b>B1 mm</b>	8,0
<b>Adjustment positions</b>	17
<b>Capacities for nuts Inch</b>	1 3/4
<b>Capacities for nuts mm</b>	46
<b>Length mm</b>	250
<b>Net weight g</b>	571



Pliers wrench: zero backlash contact pressure, no damage to edges



Conventional open end wrench: edge pressure causes surface damage

technical change and errors excepted



### Spare Parts

<b>Article No.</b>	<b>EAN</b>	
87 09 01	4003773074724	Assortment of spare parts for adjustment for 86/87 250/300 (without 87 2)