

86 43 250

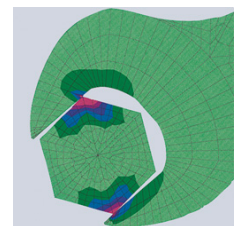
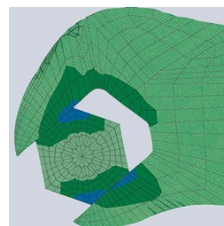
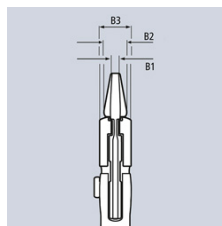
Pliers Wrench pliers and a wrench in a single tool



- Replaces the need for sets of metric and imperial spanners
- Smooth jaws for damage free installation of plated fittings - working directly on chrome!
- Adjustable tightening tool
- Also excellent for gripping, holding, pressing and bending workpieces
- Push the button for adjustment on the workpiece
- Zero backlash jaw pressure prevents damage to edges of sensitive components
- Parallel jaws give a more solid grip; its design allows flexible adjustment of all widths up to the specified maximum size
- Reliable catching of the hinge bolt: no unintentional shifting
- The ratchet type principle allows quick and easy tightening and release of all bolted connections
- Lever transmission greater than 10 : 1 for strong gripping power
- Chrome vanadium electric steel, forged, oil-hardened
- 15° angled pliers handle provides space for counter screw connections or bolted fittings on surfaces
- Reduced risk of knuckle injuries

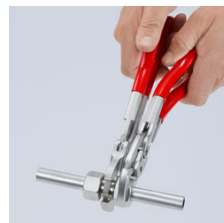
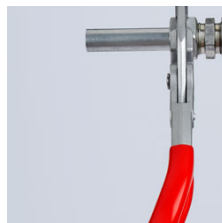
The smooth jaws grip all parallel surfaces in the capacity range with a high degree of pressure if necessary and open up almost unlimited application possibilities for the pliers wrench: e.g. for tightening locknuts, exerting pressure to activate the adhesive power of contact adhesives, edge breaking in tile work, snapping cable ties, utilisation as a small vice.

Article No.	86 43 250
EAN	4003773081296
Pliers	chrome plated
Handles	plastic coated
B2 mm	8,0
B3 mm	14,0
B1 mm	8,0
Adjustment positions	17
Capacities for nuts Inch	1 3/4
Capacities for nuts mm	46
Length mm	250
Net weight g	540



Pliers wrench: zero backlash contact pressure, no damage to edges

Conventional open end wrench: edge pressure causes surface damage



Angled handles for more room to grip

technical change and errors excepted

Spare Parts

Article No.	EAN	
87 09 01	4003773074724	Assortment of spare parts for adjustment for 86/87 250/300 (without 87 2)