



1,200-lb Electromagnetic Locks

- E-941SA-1200** *UL Listed*
- E-941SA-1K2PQ** *With bond sensor, status LED, UL listed*
- E-941SA-1K2PD** *With bond sensor, status LED, Timer*



E-941SA-1200 shown

Features:

- 1,200-lb Holding force
- Anodized aluminum housing (US 28)
- Selectable 12/24 VDC operation
- No residual magnetism
- MOV surge protection
- Adjustable mounting bracket
- Complete mounting hardware for typical installations
- “L” and “Z” brackets available for easy mounting
- Detachable faceplate

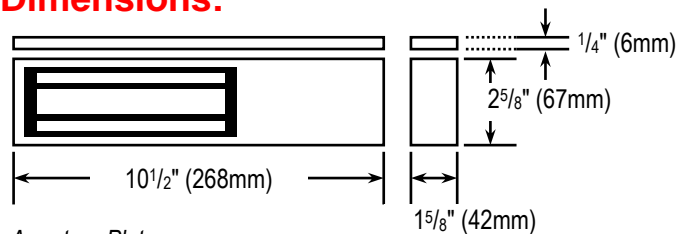
E-941SA-1K2PQ Only:

- Built-in dual-colored status LED and bond sensor to indicate locking status
- Bond sensor relay rated 3A@12VDC

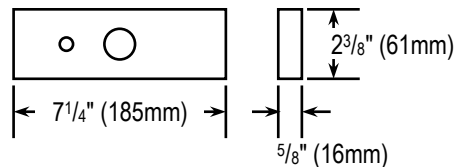
E-941SA-1K2PD Only:

- Built-in dual-colored status LED and bond sensor to indicate locking status
- Built-in timer: 1~78 seconds

Dimensions:



Armature Plate



Additional brackets for easy mounting:

E-941S-1K2/ZQ
“Z” Bracket



E-941S-1K2/LQ
“L” Bracket



E-941S-1K2/HQ
Armature Plate Holder



E-941S-1K2/UQ
“U” Bracket



Specifications:

Model	SA-1200	SA-1K2PQ	SA-1K2PD
Holding force	1,200-lb (545kg)		
Operating voltage	12/24 VDC±10%		
Current draw	12VDC	500mA@12VDC	
	24VDC	250mA@24VDC	
Bond sensor relay	3A@12VDC		
Operating temperature	14°~131° F (-10°~55° C)		
Weight	11-lb (5kg)		
Bond sensor relay		✓	✓
Status LEDs		✓	✓
Built-in timer			✓

SECO-LARM® U.S.A., Inc.

16842 Millikan Avenue, Irvine, CA, 92606

Phone: (949) 261-2999 | (800) 662-0800 Fax: (949) 261-7326

Website: www.seco-larm.com Email: sales@seco-larm.com



Copyright © 2016 SECO-LARM U.S.A., Inc. All rights reserved.
The SECO-LARM policy is one of continual development. For that reason, SECO-LARM reserves the right to change prices and specifications without notice. SECO-LARM is not responsible for misprints.

SECO-LARM® ENFORCER® CRIMEBUSTER® CBA SLI®