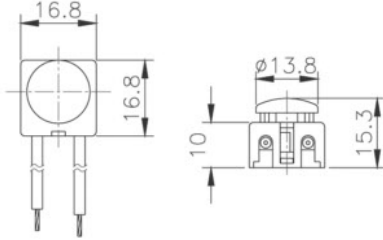


# NEW PRODUCTS 2012

A series of handy switches that will switch on night lights for safety and security. Simple two-wire packages make this an easy series to use; each has six inches long insulated wires with stripped ends. These switches are made to be mounted in a case or behind a control panel with the photo-sensor protruding through a mounting hole.

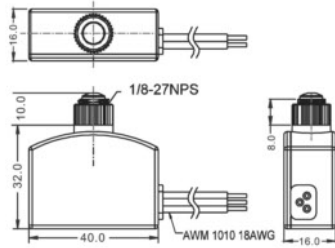
## PHOTO-ELECTRIC ON-AT-DARK SWITCHES



### 25 Watt, 125 VAC Photo-Switch

A small switch inside a plastic case with two lead wires. Normal usage might be with incandescent, Halogen or LED lamps not to exceed the 25 watt, 125 VAC rating. This switch is intended for indoor use only.

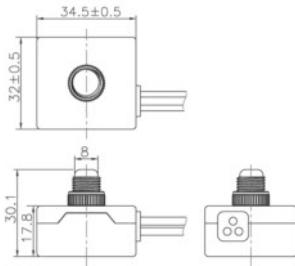
No. 30-10825



### 100 Watt INDOOR/OUTDOOR Photo-Switch

A handy switch rated for 100 watts maximum (@125 volts AC) when used to control an incandescent light or 39 voltamps if used with a fluorescent lighting assembly. The case assembly is best used inside a protected case but the 8mm diameter sensor can protrude through the mounting hole to either an indoor or outdoor environment. Built in a protective plastic shell with three lead wires.

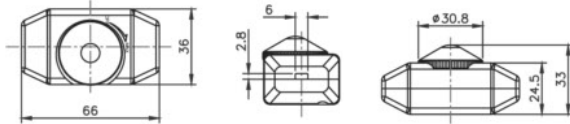
No. 30-10830



### 250 Watt INDOOR/OUTDOOR Photo-Switch

Used when a large lighting load is required (generally for large areas) such as in dark warehouse areas, protected loading docks and can handle an incandescent or Halogen lamp up to 250 watts (@125 volts AC) or could be used with fluorescent lamp assembly up to 60 watts. Built in a protective plastic shell with three lead wires. It can be used for both indoor or outdoor environment.

No. 30-10835

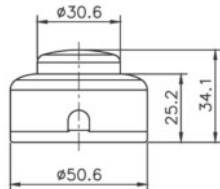


### Cord Mount Dimmer Switch

#### SPECIFICATIONS:

Current Rating:	1.2 A @ 125V AC
Material:	Plastic housing
Terminal Type:	Solder
Wire Gauge:	Up to 18 AWG, SPT-1 or SPT-2

No. 30-10190

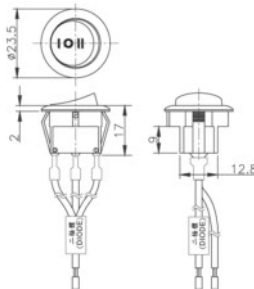


### Cord Mount Push Button Switch

#### SPECIFICATIONS:

Current Rating:	2A-125VAC, 1A-250VAC 1A-125VL
Material:	Plastic housing
Terminal Type:	Screw
Wire Gauge:	Up to 18 AWG, SPT-1 or SPT-2

No. 30-10198



### HI-LO Rocker Switch

#### SPECIFICATIONS:

Current Rating:	10A-125VA, 5A-250VAC 3A-125VL
Action:	LO-OFF-HIGH
Actuator:	Black Rocker with white Legend
Material:	Plastic housing
Terminal Type:	6" Wire Leads

No. 30-9167

Mounting Hole: 0.80"