

## CUSTOMER INFORMATION

### Safety Shoe

#### Description:

For simple, effective safety footwear, choose our Safety Shoes. The grain leather teamed with a PU sole make this shoe tough and resilient to the hazards of your work environment.

- BS EN ISO 20345:2011 S1P SRC
- 200 joule steel safety toe cap
- Penetration resistant steel midsole
- Dual density PU oil resistant sole
- Antistatic sole
- Energy absorbing heel

#### Fabric:

- Black leather
- Cambrella liner

#### Applications:

Risk assessed tasks requiring foot protection from a range of hazards



#### Colourways:



Black

#### Product Codes:

90309	3	Safety Shoe - Black
90409	4	Safety Shoe - Black
90400-B	5 - 13	Safety Shoe - Black

#### Standards:



EC Council Directive 89/686/EEC  
BS EN ISO 20345:2011 S1P SRC

#### Size Chart:

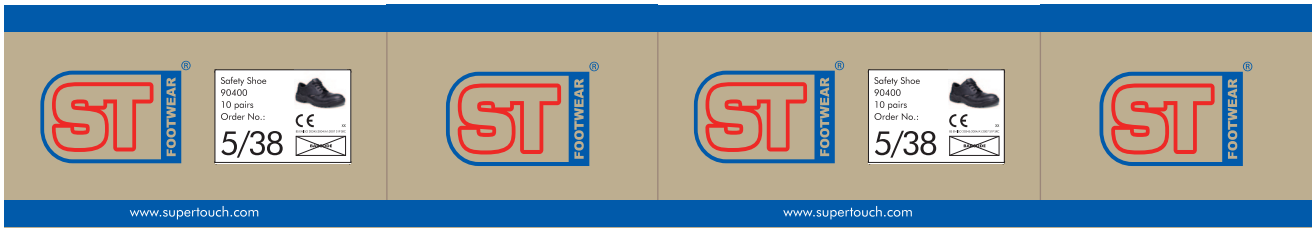
UK Size	3	4	5	6	7	8	9	10	11	12	13
EU Size	36	37	38	39	40	41	42	43	44	45	46

Issue No.: 2

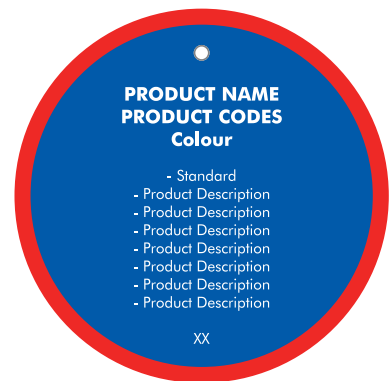
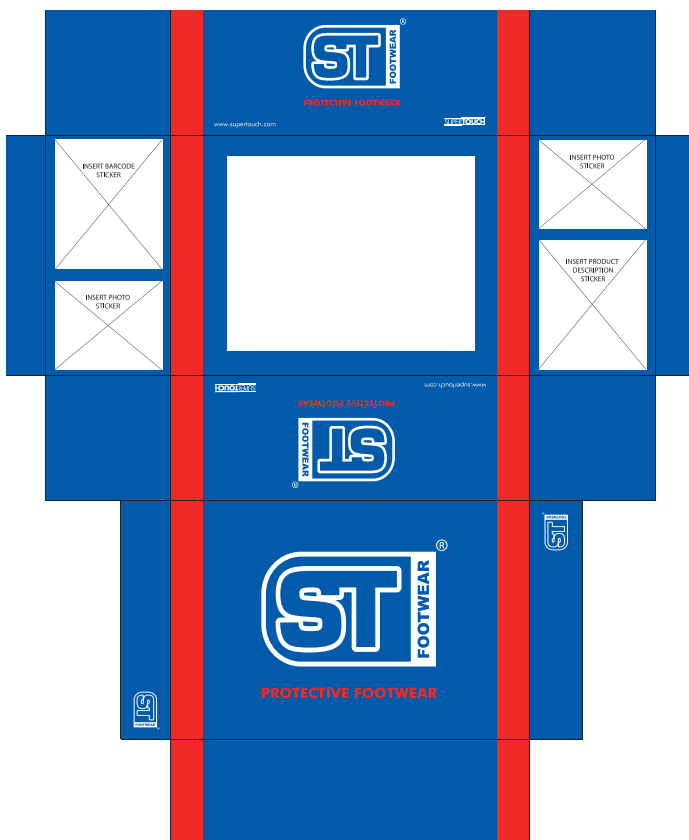
Issue Date: 22/08/2014

**Packaging:** 1 pair per box - 10 boxes per case

**Outer Carton Artwork:**



**Inner Artwork:**



**Feature Symbols:**



Product features  
200J toe cap



Product features  
reinforced midsole



Product features energy  
absorbing heel



Product features  
antistatic sole

The information shown on this specification sheet is intended as a guide and is advisory only. All details were correct at the time of issue. As conditions of use are ultimately beyond our control, we advise that the product is tested for the particular application before use.