

# Push-In Spring Type PCB Terminal Block



**RoHS  
Compliant**

## Specifications

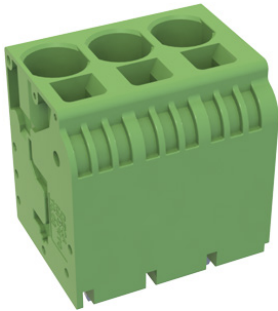
No. of Poles : 2 Pole ~ 9 Pole  
 Pitch Spacing : 10mm  
 Wire Connection Method : Push-In Spring  
 Block Orientation : Through Hole Vertical  
 PCB Hole Diameter : 1.7mm  
 Colour : Green

### In accordance to UL/CUL

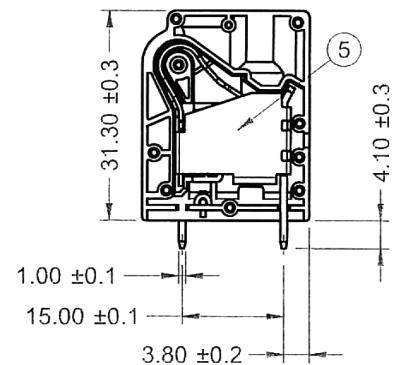
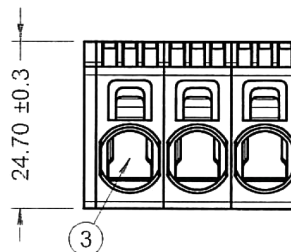
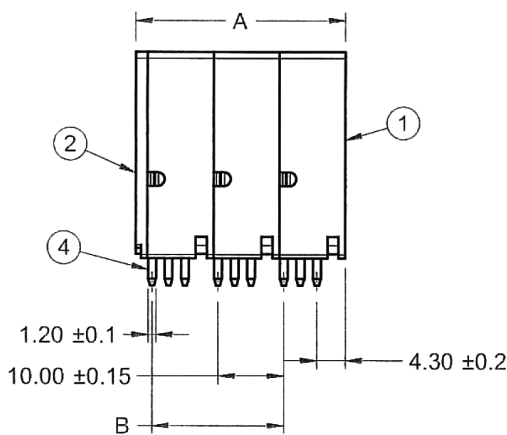
Current Rating : 66A @ AC 600V  
 Insulation Withstand Voltage : AC 2200V Min.  
 Insulation Resistance : >2000MΩ @ DC 500V  
 Wire Range : 4 ~ 20AWG

### In accordance to IEC/DIN VDE

Voltage Rating : 1000V AC  
 Current Rating : 76A  
 Rated Surge Voltage Max. : 8kV  
 Over Voltage Category : III  
 Nominal Cross Section : 0.75 ~ 16mm<sup>2</sup>  
 Operating Temperature : -40°C to + 105°C  
 Wire Strip Length : 18mm



## Diagram



Dimensions : Millimetres

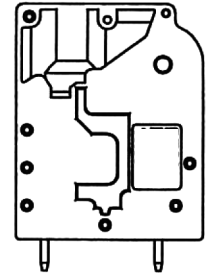
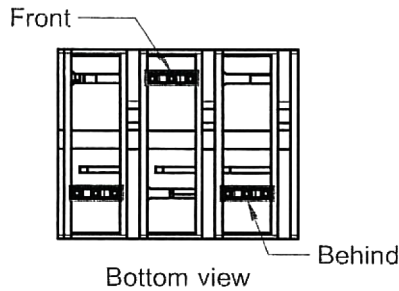
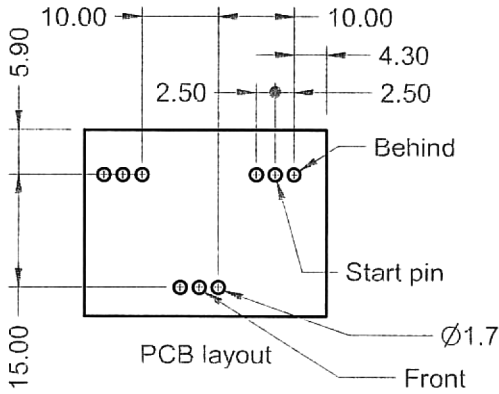
## Material Specifications

No.	Parameter	Description	Plating/Colour
1	Insulating Body	Polyamide 6.6 (UL94V-0)	Green
2	Side Cover	Polyamide 6.6 (UL94V-0)	Green
3	Spring	Stainless Steel	-
4	Contact	Copper	Tin
5	Metal Frame	Steel	Zinc

www.element14.com  
 www.farnell.com  
 www.newark.com



# Push-In Spring Type PCB Terminal Block



Dimensions : Millimetres

## Part Number Table

Description	"A" (mm)	"B" (mm)	Part Number
PCB Terminal Block, Push-In Spring, Tri-Pin, 2Pole, 10mm, 4-20AWG, THT, Green	21.8 ±0.2	10 ±0.15	MC004200
PCB Terminal Block, Push-In Spring, Tri-Pin, 3Pole, 10mm, 4-20AWG, THT, Green	31.8 ±0.2	20 ±0.2	MC004201
PCB Terminal Block, Push-In Spring, Tri-Pin, 4Pole, 10mm, 4-20AWG, THT, Green	41.8 ±0.2	30 ±0.2	MC004202
PCB Terminal Block, Push-In Spring, Tri-Pin, 5Pole, 10mm, 4-20AWG, THT, Green	51.8 ±0.25	40 ±0.2	MC004203
PCB Terminal Block, Push-In Spring, Tri-Pin, 6Pole, 10mm, 4-20AWG, THT, Green	61.8 ±0.25	50 ±0.2	MC004204
PCB Terminal Block, Push-In Spring, Tri-Pin, 7Pole, 10mm, 4-20AWG, THT, Green	71.8 ±0.25	60 ±0.25	MC004205
PCB Terminal Block, Push-In Spring, Tri-Pin, 8Pole, 10mm, 4-20AWG, THT, Green	81.8 ±0.4	70 ±0.25	MC004206
PCB Terminal Block, Push-In Spring, Tri-Pin, 9Pole, 10mm, 4-20AWG, THT, Green	91.8 ±0.4	80 ±0.25	MC004207

**Important Notice :** This data sheet and its contents (the "Information") belong to the members of the Premier Farnell group of companies (the "Group") or are licensed to it. No licence is granted for the use of it other than for information purposes in connection with the products to which it relates. No licence of any intellectual property rights is granted. The Information is subject to change without notice and replaces all data sheets previously supplied. The Information supplied is believed to be accurate but the Group assumes no responsibility for its accuracy or completeness, any error in or omission from it or for any use made of it. Users of this data sheet should check for themselves the Information and the suitability of the products for their purpose and not make any assumptions based on information included or omitted. Liability for loss or damage resulting from any reliance on the Information or use of it (including liability resulting from negligence or where the Group was aware of the possibility of such loss or damage arising) is excluded. This will not operate to limit or restrict the Group's liability for death or personal injury resulting from its negligence. Multicomp is the registered trademark of the Group. © Premier Farnell Limited 2016.

www.element14.com  
www.farnell.com  
www.newark.com

