

**PLEASE CHECK WWW.MOLEX.COM FOR LATEST PART INFORMATION**

**Part Number:** [0015976021](#)  
**Status:** **Active**  
**Overview:** Mini-Fit TPA2 Plugs and Receptacles  
**Description:** Mini-Fit® TPA Plug Housing, 4.20mm Pitch, Dual Row with Secondary Terminal Retention, 2 Circuits

**Documents:**

[3D Model](#) [Product Specification PS-5556-003 \(PDF\)](#)  
[Drawing \(PDF\)](#) [RoHS Certificate of Compliance \(PDF\)](#)  
[Product Specification PS-45750-001-001 \(PDF\)](#)

**Agency Certification**

CSA LR19980  
 UL E29179

**General**

Product Family Crimp Housings  
 Series [30068](#)  
 Application Power, Wire-to-Wire  
 Comments Current = 13A max. per circuit when header is mated to a receptacle loaded with [45750](#) series terminals crimped to 16 AWG wire. . See Molex product specification PS-45750-001 for additional current derating information.  
 Overview [Mini-Fit TPA2 Plugs and Receptacles](#)  
 Product Name Mini-Fit® TPA  
 UPC 800754202312

**Physical**

Circuits (maximum) 2  
 Color - Resin Black  
 Flammability 94V-0  
 Gender Plug  
 Glow-Wire Compliant No  
 Material - Resin Nylon  
 Net Weight 2.446/g  
 Number of Rows 2  
 Packaging Type Bag  
 Panel Mount No, Yes  
 Pitch - Mating Interface 4.20mm  
 Stackable No  
 Temperature Range - Operating -40°C to +105°C

**Electrical**

Current - Maximum per Contact 13.0A

**Solder Process Data**

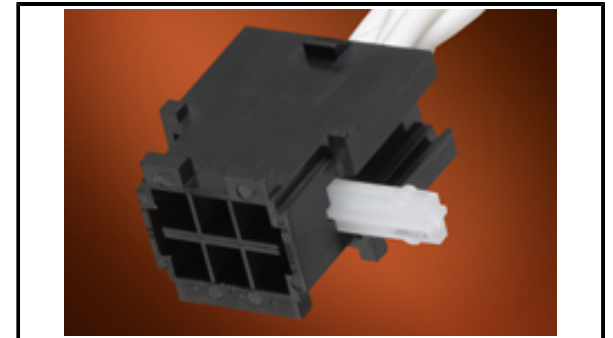
Lead-freeProcess Capability N/A

**Material Info**

Engineering Number 30068-02

**Reference - Drawing Numbers**

Product Specification PS-45750-001-001, PS-5556-003  
 Sales Drawing SD-30068-\*



Series image - Reference only

**EU ELV**

**Not Relevant**

**EU RoHS**

**Compliant**

**REACH SVHC**

Not Contained Per - ED/30/2017 (7 July 2017)

**Halogen-Free Status**

**Not Low-Halogen**

**Need more information on product environmental compliance?**

Email [productcompliance@molex.com](mailto:productcompliance@molex.com)  
 Please visit the [Contact Us](#) section for any non-product compliance questions.

China ROHS

ELV

RoHS Phthalates

Green Image

Not Relevant

Not Contained

**Search Parts in this Series**

[30068](#) Series

**Mates With**

[30068](#) Plug Housing, [30069](#) Header, [30070](#) Right Angle Header, [44473](#) Right Angle Header

**Use With**

[30072](#) Mini-Fit® TPA Key

**PLEASE CHECK [WWW.MOLEX.COM](http://WWW.MOLEX.COM) FOR LATEST PART INFORMATION**