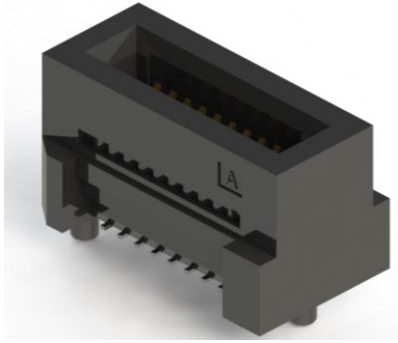




370/371 SERIES

Card Edge Connector SMT 0.8mm Pitch



Features:

- High Density for Space Saving
- Insertion Loss : Differential Pair Signaling 21Gbps@<-3dB
- Available in 20 contacts, 100 contacts, 180 contacts, 200 contacts
- Height : 7.8 mm
- SAS 3.0 & PCIe 3.0 Compliant
- Application : IPC, Server, Data Storage

Specifications:

Housing Material	High Temperature Thermoplastic UL-94V-0
Contact & Shield Material	Copper Alloy
Contact Plating	Gold Flash Plating
Current Rating	3.1 A/Pin
Contact Resistance	Initial: 15mΩ Max. After Test: ΔR 5mΩ
Dielectric Withstand Voltage	750 V AC for 60s
Insulation Resistance	1000 MΩ Min.
Operating Temperature	-55°C to +125°C
Mating Force	0.63N / Per Pair Max.
Unmating Force	0.06N / Per Pair Min.

Part Number	No. of Contacts	Photo	Key	Latch
370-020-229-102	20		No	No
370-100-229-002	100		Yes	No
371-100-529-002	100		Yes	Yes
371-180-529-002	180		Yes	Yes
370-200-229-002	200		Yes	No