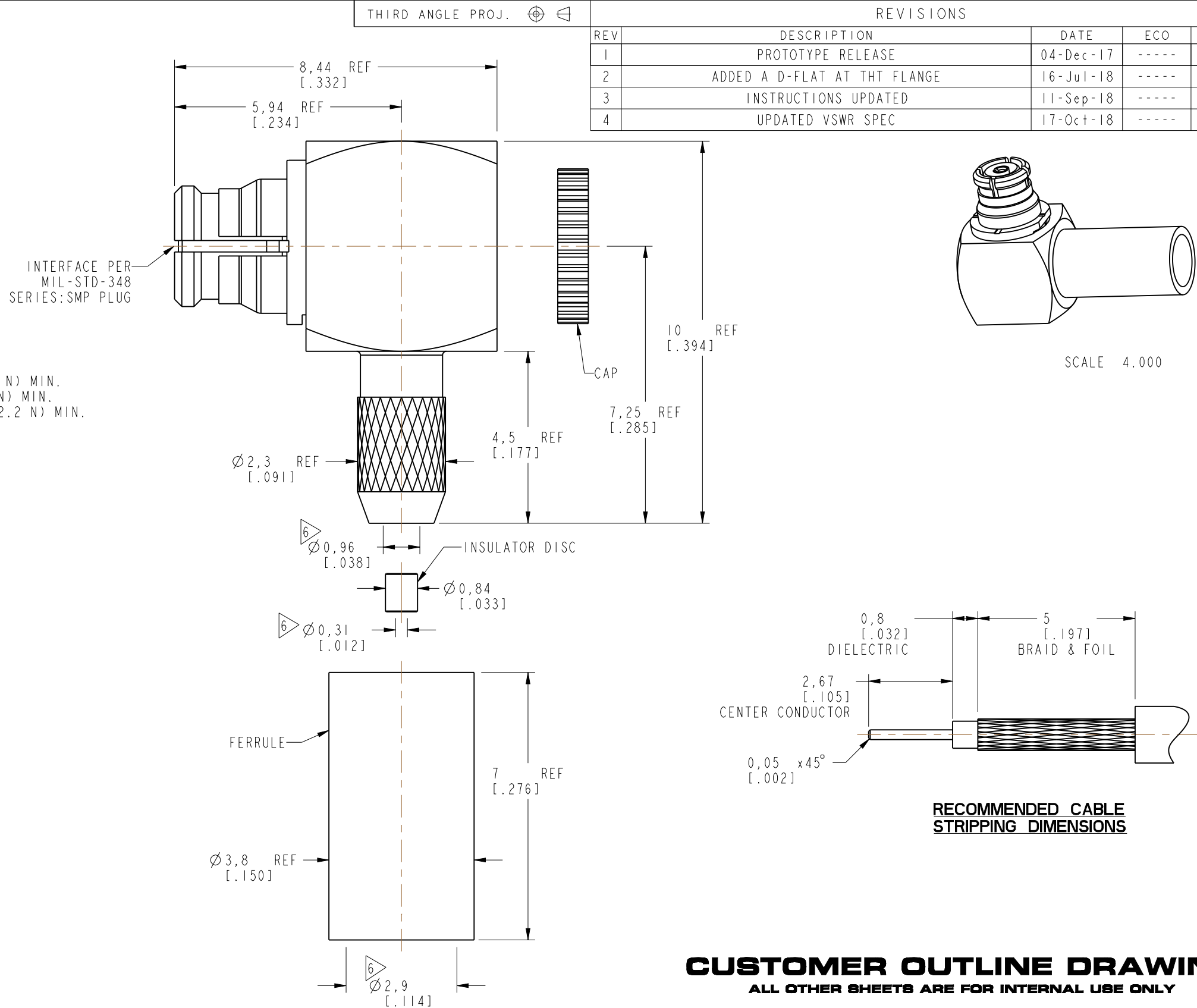


NOTES:

1. MATERIALS AND FINISHES:
 - BODY & CONTACT - BeCu, GOLD PLATING
 - BODY-REAR & CAP - BRASS, GOLD PLATING
 - RETAINING RING - BeCu, NICKEL PLATING
 - FERRULE - COPPER, NICKEL PLATING
 - INSULATOR - PTFE, NATURAL
 - INSULATOR DISC - PEEK, NATURAL
2. ELECTRICAL:
 - A. IMPEDANCE: 50 OHM
 - B. FREQUENCY RANGE: DC - 26.5 GHz.
 - C. VSWR (RETURN LOSS): 1.22 MAX. (-20 dB MIN.) @ DC - 3 GHz
1.43 MAX. (-15 dB MIN.) @ 3 - 12.4 GHz
 - D. DIELECTRIC WITHSTANDING VOLTAGE: 500 VRMS, MIN.
3. MECHANICAL:
 - A. DURABILITY: 100 CYCLES MIN. WHEN MATED FULL DETENT JACK
500 CYCLES MIN. WHEN MATED LIMITED DETENT JACK
1000 CYCLES MIN. WHEN MATED A SMOOTH BORE JACK
 - B. TEMPERATURE RANGE: -65°C TO 165°C
 - C. MATING FORCES (PER DSCC #94007):

ENGAGEMENT:		DISENGAGEMENT:	
FULL DETENT:	15 LBS (67 N) MAX.	FULL DETENT:	5 LBS (22 N) MIN.
LIMITED DETENT:	10 LBS (45 N) MAX.	LIMITED DETENT:	2 LBS (9 N) MIN.
SMOOTH BORE:	2 LBS (9 N) MAX.	SMOOTH BORE:	0.5 LBS (2.2 N) MIN.
4. PACKAGING:
 - A. QUANTITY: SINGLE PACK
 - B. MARKING: BAG TO BE MARKED
"AMPHENOL RF, SMP-FR-C19 AND DATE CODE"
5. CABLE ASSEMBLY INSTRUCTIONS:
 - A. TRIM CABLE AS SHOWN.
 - B. SLIDE FERRULE AND INSULATOR DISC ONTO CABLE.
 - C. SOLDER CABLE CENTER CONDUCTOR TO CONTACT.
 - D. CRIMP FERRULE OVER THE BRAID WITH 0.128" HEX.
 - E. PRESS CAP FLUSH.

6. SHOWS CABLE ENTRY DIMENSIONS.



PRELIMINARY ISSUE

CUSTOMER OUTLINE DRAWING

ALL OTHER SHEETS ARE FOR INTERNAL USE ONLY

UNLESS OTHERWISE SPECIFIED, DIMENSIONS ARE IN METRIC AND TOLERANCES ARE: <0.5mm 0.5 - 6mm 6 - 30mm 30 - 120mm ANGLES ± 0.05mm ±0.1mm ±0.2mm ± 0.3mm ±1° NOTICE - These drawings, specifications, or other data (1) are, and remain the property of Amphenol corp. (2) must be returned upon request; and (3) are confidential and not to be disclosed to any person other than those to whom they are given by Amphenol Corp. the furnishing of these drawings, specifications, or other data by Amphenol Corp., or to any other person to anyone for any purpose is not to be regarded by implication or otherwise in any manner licensing, granting rights to permitting such holder or any other person to manufacture, use or sell any product, process or design, patented or otherwise, that may in any way be related to or disclosed by said drawings, specifications, or other data.	MATERIAL SEE NOTES	DRAWN LOKESH P	DATE 16-Jul-18	TITLE SMP RA PLUG WITH ROCK RING FOR RG 178 CABLE		Amphenol RF www.amphenolrf.com	
		ENGINEER VIJI K	DATE 04-Dec-17			DRAWING NO. SMP-FR-C19	
	REFERENCE EAR# 8025 AND SMP-FR-C08-1	APPROVED	DATE	SCALE: 8.5:1.0	SHEET 2 OF 2	ITEM NO. SMP-FR-C19	
	CONFIGURATION LEVEL: In Work	CAD FILE	DWG SIZE B		REV 4	PART NO. SMP-FR-C19	
	FINISH						