

Why Griplt®?

Verified weights, Independently tested on 15mm plasterboard

- Strongest plasterboard fixing on the market holding extreme loads of up to 225kgs per fixing
- Holds heavier loads than conventional plasterboard fixings
- Removable & re-usable
- Easy & Quick to install only 3 quick steps
- Suitable for all plasterboard types
- Allows you to hang what you want where you want, there is no need to search for the baton behind the plasterboard to ensure a secure fixing.
- Colour coded to indicate strength
- Various assortment packs of 4, 8, 25 and tubs of 100
- Job specific kits also available (e.g Curtain & Blind Kit, Mirror & Picture Kit and Shelf Kit)
- A range of Griplt® accessories are also available (Hole cutters, tile saws, Under Cutting tool)
- Griplt® saves you time, materials and money

What is each Griplt® used for?



15mm

Ideal for bathroom accessories, towel rails, ceiling fans, wall lights, small shelving, curtain rails, Venetian blinds, picture frames and mirrors



18mm

Ideal for lighting tracks, shower units, audio visual equipment, AC units, heated towel rails, bathroom fixtures, suspended ceilings and large shelf brackets



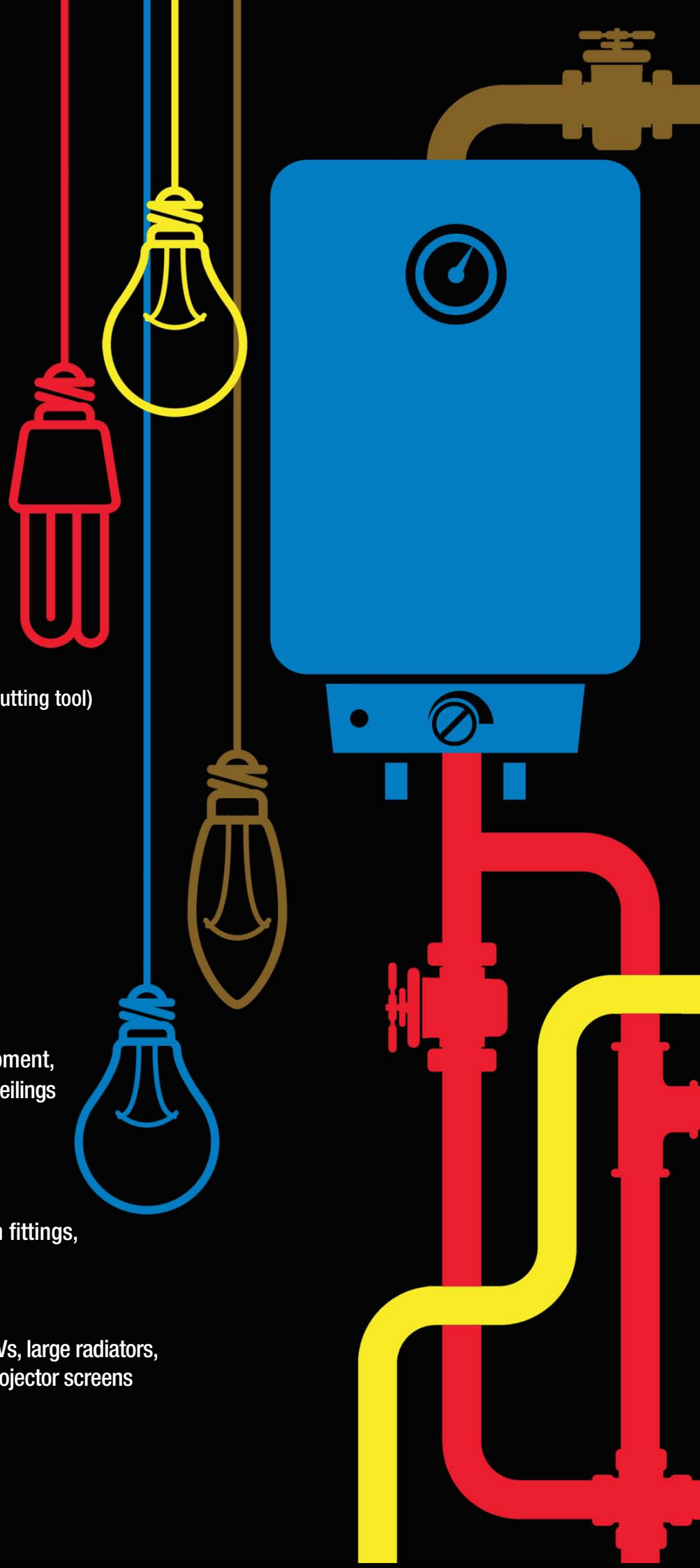
20mm

Ideal for mounted gaming units, audio visual equipment, speakers, ceiling lights, chandeliers, radiators, bathroom fittings, heaters and cabinets



25mm

Ideal for kitchen cupboards, water heaters, wall mounted TVs, large radiators, PC screens, wall mounted home entertainment systems, projector screens and large AC units







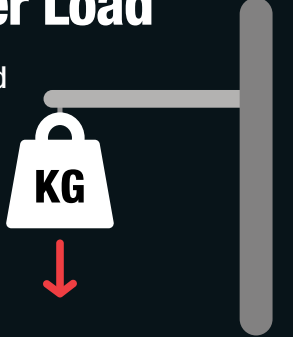
The World's Ultimate Plasterboard Fixing

Weights & Measurements

Verified weights, Independently tested on 15mm plasterboard

Shear Load		Griptt®	Size	Substrate thickness	Min edge distance	Safe Load*			Max Load*		
						50mm	75mm	150mm	50mm	75mm	150mm
Weight suspended from a fixing, mounted in a vertical wall with a load or weight attached to that fixing and acting vertically downwards.		●	15mm	9.5 -15mm	20mm	71kgs			142kgs		
			18mm	9.5 -15mm	24mm	74kgs			148kgs		
			20mm	9.5 -15mm	28mm	93kgs			185kgs		
			25mm	9.5 -15mm	28mm	113kgs			225kgs		

Tension Load		Griptt®	Size	Substrate thickness	Min edge distance	Safe Load*			Max Load*		
						50mm	75mm	150mm	50mm	75mm	150mm
The force applied to the fixing is 'pulled' away from the wall.		●	15mm	9.5 -15mm	20mm	20kgs			38kgs		
			18mm	9.5 -15mm	24mm	20kgs			39kgs		
			20mm	9.5 -15mm	28mm	20kgs			39kgs		
			25mm	9.5 -15mm	28mm	20kgs			39kgs		

Cantilever Load		Griptt®	Size	Safe Load*			Max Load*		
				50mm	75mm	150mm	50mm	75mm	150mm
The weight applied along the length of a horizontal beam at a known distance from a vertical wall and acting.		●	15mm	35kgs	30kgs	18kgs	70kgs	60kgs	36kgs
			18mm	25kgs	31kgs	12kgs	50kgs	62kgs	23kgs
			20mm	33kgs	35kgs	24kgs	66kgs	70kgs	48kgs
			25mm	30kgs	20kgs	25kgs	61kgs	40kgs	50kgs

How does it work?

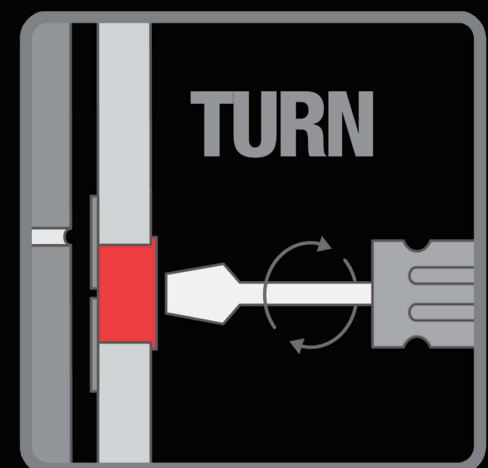
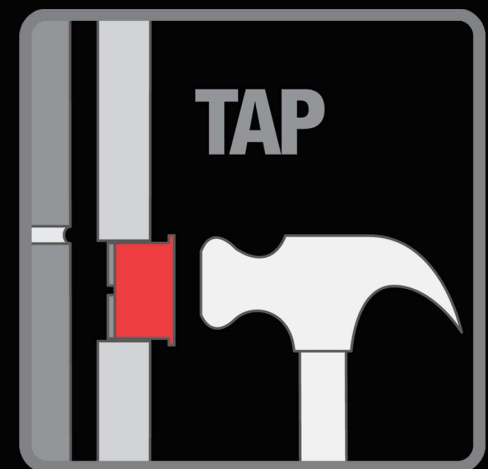
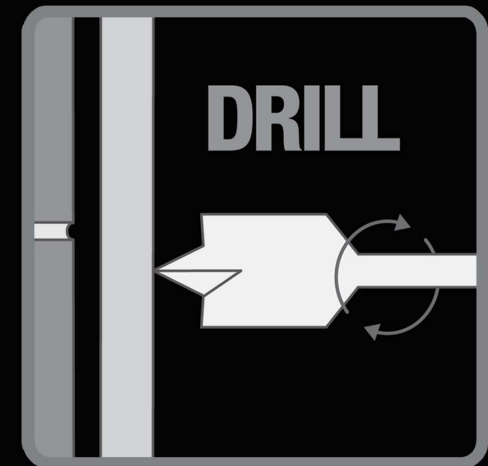
The unique design of the Griplt[®] allows the weight to be spread across a wider area and also means that you don't need much space behind the plasterboard.

It couldn't be easier to install, simply:

- **DRILL** the hole required.
- Angle the Griplt[®] so that the screws are at approximately 45 degrees (*this allows maximum strength*), **TAP** the Griplt into the hole.
- Then **TURN** the Griplt[®] wings open using the central slot with a flat head screwdriver.

It really is as easy as that...
DRILL, TAP & TURN!

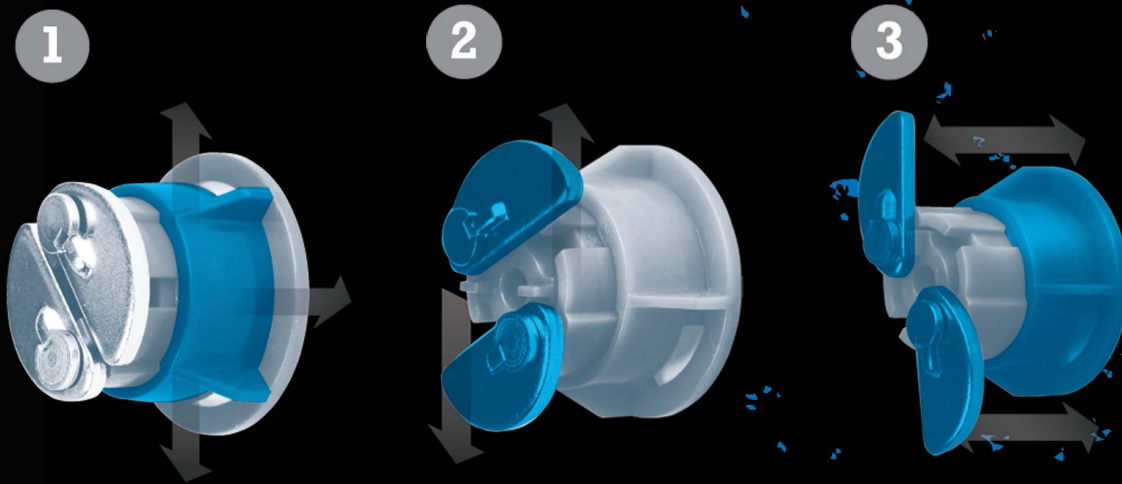
Watch these
installation
videos



GRIPIT[®]

The World's Ultimate
Plasterboard Fixing

Unique 3-way Gripping System



Step 1

The universal collar automatically adjusts to the thickness of the plasterboard and distributes load weight across a much wider area of the plasterboard than conventional fixings or plugs.

When tapped into place, anti-rotational wings help to eliminate movement and increase lateral strength.

2

Step 2

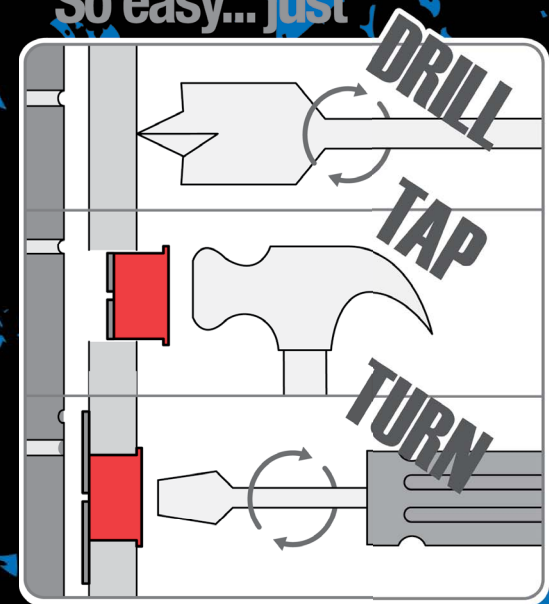
Unique backing wings expand inside the cavity space to provide a secure anchor on the back of the plasterboard surface.

3

Step 3

Fixing your item to the Griptt[®] induces a vice-like grip onto all three surfaces of the plasterboard, providing the ultimate grip for heavier loads.

So easy... just

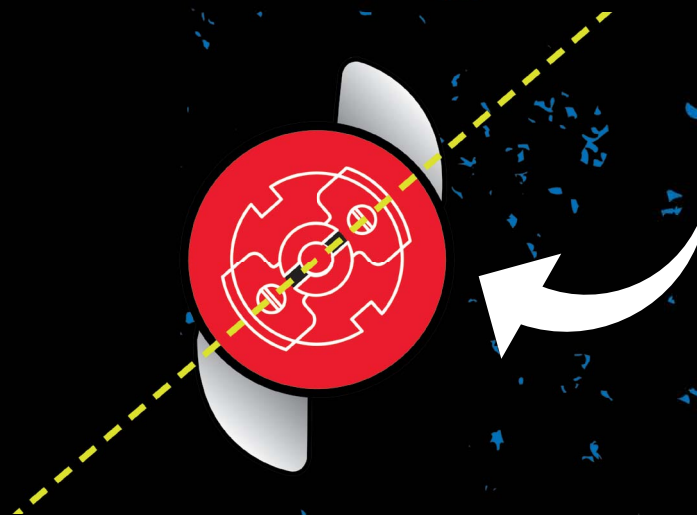


Just DRILL - TAP & TURN

Use positioning shown below for correct fixing.

Open the Griptt[®] wings using the quick-fix slot provided. Griptt[®]s are also re-usable: simply turn wing screws to release & remove. All Griptt[®]s are sold with the recommended screws.

For maximum strength, fit with screws tilted to the right as shown.



FAQs

Q: What size Drill bit do I need?

A: You can use a standard flat / spade drill bit to drill the hole to install your Griplt®. The size of drill / spade bit depends on the size of fixing you are installing. 15mm Yellow Griplt® - requires a 15mm drill bit, 18mm Red Griplt® – requires a 18mm drill bit, 20mm Brown Griplt® - requires a 20mm drill bit and the 25mm Blue Griplt® - requires a 25mm drill bit.

Q: Can I use any screw size with Griplt®?

A: You can use any length of screw / bolt to hang heavy items on plasterboard we supply some standard length screws / bolts with the fixings when you buy them. The Yellow Griplt® requires a 4mm screw, the Red Griplt a 5mm screw (self-tapping in the centre of the fixing). The larger Brown Griplt® requires an M6 bolt and the Blue Griplt® a M8 bolt (the hole in these fixings has been threaded). As long as you have sufficient space behind the plasterboard you can use as long or short a screw / bolt as you see fit for the task at hand.

Q: It seems like a large hole to drill if I decide to use a Griplt®?

A: With the majority of installations you won't be able to see the Griplt® once you have completed your installation. E.g. if you are hanging a cabinet, radiator, mirror - the bracket or piece of furniture will hide the fixing - so this need not be a problem. Apart from the unique wings, the Griplt® actually gains a lot of its strength from the large surface area that is in contact with the plasterboard. The Griplt® becomes an integral part of the plasterboard. If you decide to remove the Griplt® at a later date - you will have a hole in the wall no matter what type of fixing you use, we would advise you to fill the hole as you would with any other.

Q: What equipment do I need to install a Griplt® and how complicated is it to use?

A: Installing a Griplt® is quick and simple. There are 3 easy steps. All you need is a drill (with the correct size drill bit), a hammer and a screw driver. Simply drill your hole once you have decided on the location of your fixings, tap the Griplt® into the hole with your hammer, then open the wings with your flat head screwdriver using the central slot. Your Griplt® is now secure and safe for you to hang your chosen item onto the wall using the screws / bolts provided.

Q: They seem a bit expensive!

A: Griplt® is a premium product that is manufactured in the UK. It is a premium product because it is 'The World's Ultimate Plasterboard Fixing'. It would be unfair to compare a Griplt® to your traditional wall plugs and self-drive fixings because whilst they are cheaper they do not claim to hold the extreme loads that a Griplt® can. One other thing to consider is whilst the unit price is higher the quantity of fixings required for the task is fewer.

Q: How / why is a Griplt® so strong compared to traditional plasterboard fixings?

A: The incredible loading capabilities of Griplt fixings are derived from a unique combination of mechanical innovation and physical engineering. Each component is designed to work in harmony to create the most effective plasterboard anchoring device on the market today. The Griplt® system is not based upon anchorage to a single contact point like most other fixing products which tear loose under stress. Griplt®s use a unique three-way system of multiple contact points in combination to disperse load and lock onto plasterboard and drywall. We manufacture our own products at our high-tech factory in Wiltshire - England. Each Griplt® component is precision moulded by us and tested to ensure they always deliver ultimate performance.

Q: Do we have to purchase a special tool to use the Griplt®?

A: No. As long as you have the correct drill bit size all you really need is a hammer, drill and screw driver.

Q: What is the best-selling Griplt® Kit?

A: Our best-selling kit is the Assorted kit. We think people like to have a selection of Griplt®s in their tool box so they always have the correct Griplt® for any job

Q: What if my plasterboard is thicker than 15mm or is double thickness?

A: This is not a problem. You can buy one of our Undercutting tools. This can be used when you have double thickness plasterboard. The Griplt® Undercutting Tool accessory is specially designed to create a recess in double thickness plasterboard, insulation or Dot & Dab adhesive from behind plasterboard and plasterboard, to allow the Griplt® wings to rotate into place. This accessory may also be used for creating wing space when either timber wall studs or building block material is encountered. Griplt® make tough and robust accessory tools and care should be taken to handle your power tools appropriately.

GRIPIT®

**The World's Ultimate
Plasterboard Fixing**

GRIPIT®

The World's Ultimate
Plasterboard Fixing

DRILL, TAP & TURN

ASSORTED
KIT
32

GRIPIT®

The World's Ultimate
Plasterboard Fixing

UK Building Products Limited
C1 - C3 Ashville Centre, Commerce Way,
Melksham, Wiltshire SN12 6ZE

+44 (0)845 6800 215
sales@Griptfixings.co.uk
technical@Griptfixings.co.uk



www.Griptfixings.co.uk

GRIPIT®
The World's Ultimate
Plasterboard Fixing
Fixes anything to plasterboard

TAP & TURN

18x30
mm
25
mm
113
kg



GRIPIT®

The World's Ultimate
Plasterboard Fixing

CURTAIN RAIL AND BLIND Fixing kit

QTY
7
7x25
mm
15
mm
71
kg
Safe Load



GRIT