

Product End of Life Notice

10/2018

G3 Human Machine Interfaces (HMIs)



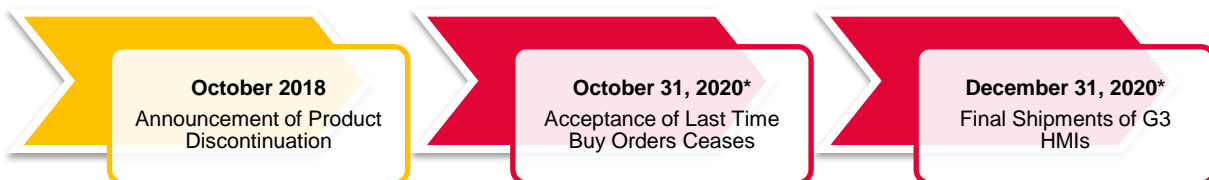
Introduction

For nearly a decade, Red Lion's G3 HMIs have served customers requiring easy-to-configure, powerfully versatile HMIs for a variety of applications. With the introduction of the new CR3000 product line in 2017, customers have an opportunity to transition their applications to newer technology, taking advantage of advanced features like improved graphics, gauges and an enhanced web server, all while retaining the familiar capabilities our customers have come to value and trust over the years.

This document describes the alternatives available and provides information on how their features compare with one another.

Timing

Red Lion Controls intends to honor the standard warranty obligation for this product when ordered and delivered in accordance with the following transition schedule:



October 2018

- Announcement to customers
- Red Lion begins accepting non-cancellable, non-returnable last time buy orders
- Orders may be scheduled for delivery between October 2018 and December 31, 2020

October 31, 2020

- General availability of G3 HMIs ceases
- Acceptance of last time buy orders concludes

December 31, 2020

- Shipment of G3 HMIs stops

*Dates may be subject to change depending on product sales

What happens to my current investment in G3 HMIs?

Maintaining excellent compatibility for easy and cost-effective transition is an important design criterion when designing next generation products. Red Lion Controls recommends the CR3000 HMIs as a designated replacement for G3 HMIs used in indoor applications. For outdoor applications, Red Lion recommends our Graphite® HMIs.

Please note some differences do exist. Consult product manuals or contact technical support for additional detailed information.

Please see the following for a comparison of products:

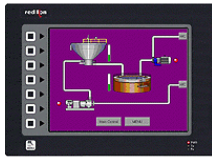
- [Appendix A: General Comparison](#)
 - [Crimson Database Conversion](#)
- [Appendix B: 6 Inch HMI Alternatives](#)
- [Appendix C: 8 Inch HMI Alternatives](#)
- [Appendix D: 10 Inch HMI Alternative](#)
- [Appendix E: 15 Inch HMI Alternative](#)

Appendix A

Comparison of G3 HMIs, CR3000 HMIs and Graphite HMIs

The CR3000 is the designated replacement for the indoor models of the G3 HMIs. The Graphite HMIs will replace the outdoor G3 HMIs. The chart below compares the features of these products.

One feature of the G3 HMI that did not transition is the physical membrane buttons on the outside panel of the display. However, several options exist in the CR3000 and Graphite HMI families to replace the button functionality, including pop-up menus, pop-up windows, and directory screens, all easily created in the Crimson development environment. See the Red Lion YouTube channel for a video on how to create pop-up menus as an effective alternative to the physical panel buttons.



G3 HMIs



CR3000 HMIs



Graphite HMIs

Crimson Database Conversion

Databases created by Crimson 3.0 can be opened directly by Crimson 3.1 by changing the file type selection in the bottom right-hand corner of the File Open dialog box. When you come to save the database, Crimson will note that the file must be saved in Crimson 3.1 format and will ask you where you wish to save it and under what name. The new name will typically be the old one with the cd3 extension replaced with cd31. Crimson 3.0 databases may also be opened via the File Import command, which essentially performs the same operation but without any need to change the selected file type. You will be asked to which new device you wish to convert the file. You may be offered several options, depending on which products are best capable of supporting the display resolution of the original device.

The alternatives have neither the MENU key nor the soft keys available on the G3's external panel. You will need to replace the functionality of these buttons with on-screen buttons and other elements that achieve the same result. We recommend that you do this in Crimson 3.0 before converting the database to Crimson 3.1.

Appendix B

6 Inch HMI Alternatives

	G3 Series Product	CR3000 Alternative
Indoor	G306A000	CR30000700000420
Power	24 VDC +/- 20%	10 to 30 VDC
Construction	Metal Case	Plastic Case
Display	6" 320 x 240 Color	7" 800 x 480 Color
Serial Ports	1 - RS485, 2 - RS232	2 - RS232/RS485, 2 - RS232
10/100 Ethernet	1	2
Front Panel Buttons	Yes	Create in Crimson 3.1
Mounting	Panel	Panel - requires G3AD0607 for exact replacement

Appendix C

8 Inch HMI Alternatives

	G3 Series HMIs			CR3000 Alternatives	
Part Number	G308A210	G308A230	G308C210	CR30000700000420	CR30001000000420
Power	24 VDC +/- 20%	24 VDC +/- 20%	24 VDC +/- 20%	10 to 30 VDC	10 to 30 VDC
Construction	Metal Case	Metal Case	Metal Case	Plastic Case	Plastic Case
Display	8.4" 640 x 480	8.4" 640 x 480	7.5" 640 x 480	7" 800 x 600	10.4" 800 x 600
Serial Ports	1 - RS485, 2 - RS232	1 - RS485, 2 - RS232	1 - RS485, 2 - RS232	2 - RS232/RS485, 2 - RS232	2 - RS232/RS485, 2 - RS232
10/100 Ethernet	1	1	1	2	2
Front Panel Buttons	Yes	Yes	Yes	Create in Crimson 3.1	Create in Crimson 3.1
Mounting	Panel	Panel	Panel	Requires G3AD0807 for exact replacement	Panel - new cutout required
List Price	\$2,208	\$2,760	\$1,655	\$1,199	\$1,999

Prices listed are Red Lion standard list price at time of publication, in USD. Pricing is for illustrative purposes only and does not constitute a quote.

Appendix D

10 Inch HMI Alternatives

Part Number	G3 Series HMIs			CR3000 Alternative	Graphite Alternative
Indoor	G310C210	G310R210		CR30001000000420	
Indoor	G310C230	G310R230		CR30001000000420	
Outdoor			G310S210		G10S0000
Outdoor			G310S230		G10S1000
Power	24 VDC +/- 20%	24 VDC +/- 20%	24 VDC +/- 20%	10 to 30 VDC	10 to 30 VDC
Construction	Metal Case	Metal Case	Metal Case	Plastic Case	Metal Case
Display	640 x 480	800 x 600	640 x 480	800 x 600	640 x 480
Serial Ports	1 - RS485, 2 - RS232	1 - RS485, 2 - RS232	1 - RS485, 2 - RS232	2 - RS232/RS485, 2 - RS232	1 - RS485, 2 - RS232
Ethernet	1 (210), 2 (230)	1 (210), 2 (230)	1 (210), 2 (230)	2	G10S0000 - 1, G10S1000 - 2
External Memory	Compact flash	Compact flash	Compact flash	SD Card	SD Card
Front Panel Buttons	Yes	Yes	Yes	Create in Crimson 3.1	Create in Crimson 3.1
Mounting	Panel	Panel	Panel	Panel - requires G3AD1010 for exact replacement	Panel - G3AD1010 for exact replacement
List Price	\$2649/\$3200	\$2980/\$3532	\$2870/\$3422	\$1999	\$3142/\$3445

Prices listed are Red Lion standard list price at time of publication, in USD. Pricing is for illustrative purposes only and does not constitute a quote.

Appendix E

15 Inch HMI Alternative

	G3 Series HMIs		CR3000 Alternative
Indoor	G315C210	G315C230	CR30001500000420
Power	24 VDC +/- 20%	24 VDC +/- 20%	10 to 30 VDC
Construction	Metal Case	Metal Case	Plastic Case
Display	640 x 480	800 x 600	800 x 600
Serial Ports	1 - RS485, 2 - RS232	1 - RS485, 2 - RS232	2 - RS232/RS485, 2 - RS232
Ethernet	1	2	2
Front Panel Buttons	Yes	Yes	Create in Crimson 3.1
Mounting	Panel	Panel	Panel - requires G3AD1515 for exact replacement