



Grove - Rotary Angle Sensor User Manual

Release date: 2015/9/22

Version: 1.0

Wiki:[http://www.seeedstudio.com/wiki/Grove -](http://www.seeedstudio.com/wiki/Grove_-_Rotary_Angle_Sensor)

[_Rotary Angle Sensor](http://www.seeedstudio.com/wiki/Grove_-_Rotary_Angle_Sensor)

Bazaar:<http://www.seeedstudio.com/depot/Grove-Rotary-Angle-SensorP-p-1242.html>

Document Revision History

Revision	Date	Author	Description
1.0	Sep 22, 2015	Jiankai.li	Create file

Contents

Document Revision History	2
1. Introduction	2
2. Feature	3
3. Specification	4
4. Usage	5
4.1 With Arduino	5
4.2 With TI LaunchPad	7
4.3 With Raspberry Pi	8
5. Resource	11

Disclaimer

For physical injuries and possessions loss caused by those reasons which are not related to product quality, such as operating without following manual guide, natural disasters or force majeure, we take no responsibility for that.

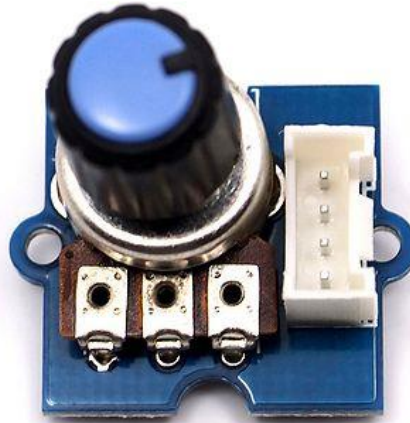
Under the supervision of Seeed Technology Inc., this manual has been compiled and published which covered the latest product description and specification. The content of this manual is subject to change without notice.

Copyright

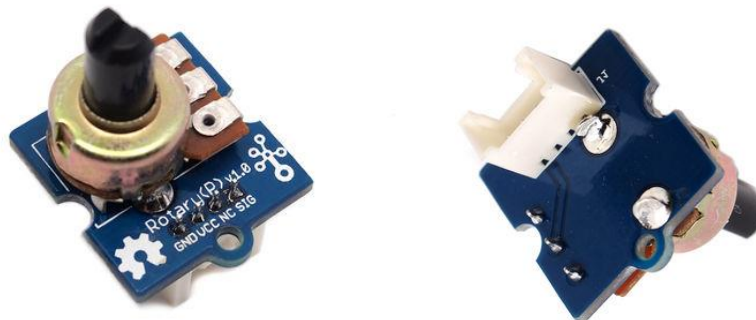
The design of this product (including software) and its accessories is under tutelage of laws. Any action to violate relevant right of our product will be penalized through law. Please consciously observe relevant local laws in the use of this product.

1. Introduction

The rotary angle sensor produces analog output between 0 and Vcc (5V DC with Seeeduino) on its D1 connector. The D2 connector is not used. The angular range is 300 degrees with a linear change in value. The resistance value is 10k ohms, perfect for Arduino use. This may also be known as a “potentiometer” .



There is another production - Grove - Rotary Angle Sensor(P). What does “P” mean? “P” is for “panel mount” in this product. It is the sister version of Grove - Rotary Angle Sensor. They are identical except the Grove connector is moved to the back so that you can easily use it as a neat and wire-free human interface device.



2. Feature

- Grove Interface
- Easy to Use
- Grove Base Module

3. Specification

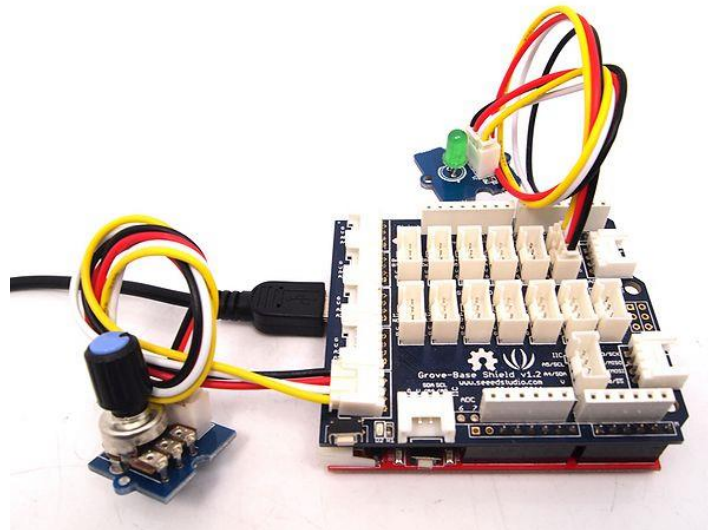
Item	Min	Typical	Max	Unit
Voltage	4.75	5.0	5.25	VDC
Rotary Angle	0	~	300	Deg
Dimension	19x19x30.1			mm

4. Usage

4.1 With Arduino

The following sketch demonstrates a simple application of using the rotary angle sensor to control the brightness of the LED. The degrees of Rotary Angle Sensor is 0~300 degrees, we should be converted to the corresponding voltage value in demo code for controlling the brightness of the LED.

- As the picture on the below indicates, the Rotary Angle Sensor sensor is connected to Analog port A0 of the [Grove - Basic Shield](#) and the LED is connected to digital port 2.



- Copy and paste code below to a new Arduino sketch.

```

/*****
*/macro definitions of Rotary angle sensor and LED pin*/
#define ROTARY_ANGLE_SENSOR A0
#define LED 2//the Grove - LED is connected to D3 of Arduino
#define ADC_REF 5//reference voltage of ADC is 5v.If the Vcc switch on the seeeduino
//board switches to 3V3, the ADC_REF should be 3.3
#define GROVE_VCC 5//VCC of the grove interface is normally 5v
#define FULL_ANGLE 300//full value of the rotary angle is 300 degrees
void setup()
{
  Serial.begin(9600);
  pinsInit();
}

void loop()

```



```

{
  int degrees;
  degrees = getDegree();
  Serial.println("The angle between the mark and the starting position:");
  Serial.println(degrees);

  int brightness;
  /*The degrees is 0~300, should be converted to be 0~255 to control the*/
  /*brightness of LED */
  brightness = map(degrees, 0, FULL_ANGLE, 0, 255);
  controlBrightness(brightness);

  delay(500);
}
void pinsInit()
{
  pinMode(ROTARY_ANGLE_SENSOR, INPUT);
  pinMode(LED, OUTPUT);
}

/*PWM control brightness */
/*If brightness is 0, the LED is off. */
/*The Greater the brightness, the brighter the LED.*/
/*The range of brightness is 0~255 */
void controlBrightness(int brightness)
{
  analogWrite(LED, brightness);
}

/*****/
/*Function: Get the angle between the mark and the starting position */
/*Parameter:-void */
/*Return:-int, the range of degrees is 0~300 */
int getDegree()
{
  int sensor_value = analogRead(ROTARY_ANGLE_SENSOR);
  float voltage;
  voltage = (float)sensor_value*ADC_REF/1023;
  float degrees = (voltage*FULL_ANGLE)/GROVE_VCC;
  return degrees;
}

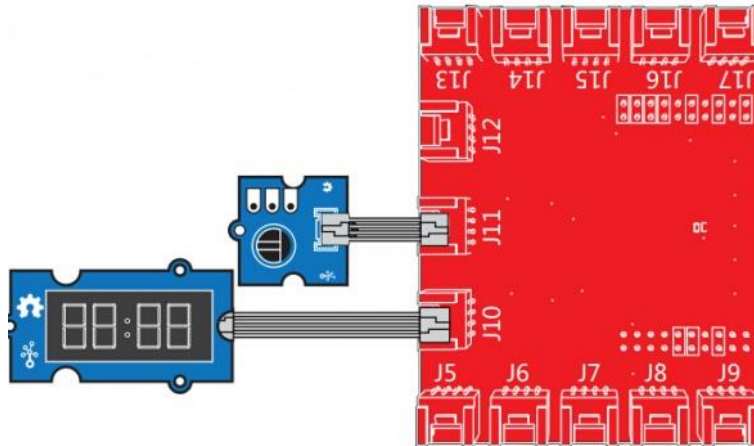
```

- Upload the code, please click [here](#) if you do not know how to upload.
- Then you can control the LED by rotating the sensor. Have a try!

4.2 With TI LaunchPad

Reading the Potentiometer (Rotary Angle Sensor)

This example shows how to read the analog output coming from the Grove potentiometer module. We will be combining a few Grove modules in this example! By turning the potentiometer knob, we will display the analog reading value on the Grove 4-digital display.



```

/*
  Rotary Angle Sensor
  Demonstrates analog input by reading an analog sensor on J16 of the Grove Base BoosterPack. The
  speed of the red LED on the LaunchPad will change depending on the position of the potentiometer
  knob. This example will also display the analog reading value on the Grove 4-digital display.

```

The circuit:

- * Potentiometer attached to pin 24 (J6 on Grove Base BoosterPack)
- * center pin of the potentiometer to the analog pin
- * one side pin (either one) to ground
- * the other side pin to VCC (3.3V)

* Note: Because of unstable of the voltage, the value of the rotary angle sensor varies slightly from run to run even you don't touch it.

Created by Oliver Wang

This example code is in the public domain.

http://www.seeedstudio.com/wiki/GROVE_-_Starter_Kit_v1.1b#Grove_-_Rotary_Angle_Sensor

```
*/
```

```
#include "TM1637.h"
```

```
/* Macro Define */
```

```
#define CLK          39                /* 4-digital display clock pin */
```

```

#define DIO          38          /* 4-digital display data pin */
#define ROTARY_ANGLE_P  24      /* pin of rotary angle sensor */

/* Global Variables */
TM1637 tm1637(CLK, DIO);        /* 4-digital display object */
int analog_value = 0;          /* variable to store the value coming from rotary angle
sensor */

int8_t bits[4] = {0};          /* array to store the single bits of the value */

/* the setup() method runs once, when the sketch starts */
void setup() {

    /* Initialize 4-digital display */
    tm1637.init();
    tm1637.set(BRIGHT_TYPICAL);
}

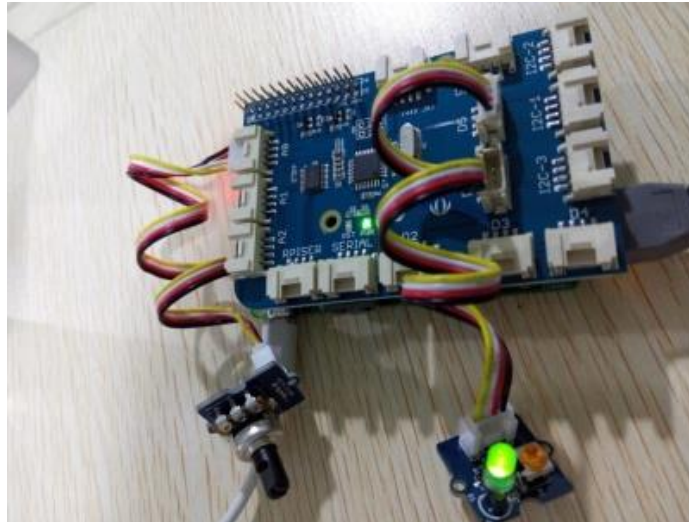
/* the loop() method runs over and over again */
void loop() {

    analog_value = analogRead(ROTARY_ANGLE_P);    /* read the value from the sensor */
    memset(bits, 0, 4);                          /* reset array when we use it */
    for(int i = 3; i >= 0; i--) {
        /* get single bits of the analog value */
        bits[i] = analog_value % 10;
        analog_value = analog_value / 10;
        tm1637.display(i, bits[i]);              /* display by 4-digital display */
    }
    delay(100);
}

```

4.3 With Raspberry Pi

This example uses ADC channel 0 to get the value of the rotary angle. Then gives PWM output to change brightness of LED.



```
# GrovePi + Grove Rotary Angle Sensor (Potentiometer) + Grove LED
import time
import grovepi

# Connect the Grove Rotary Angle Sensor to analog port A0
# SIG, NC, VCC, GND
potentiometer = 0

# Connect the LED to digital port D5
# SIG, NC, VCC, GND
led = 5

grovepi.pinMode(potentiometer, "INPUT")
grovepi.pinMode(led, "OUTPUT")
time.sleep(1)

# Reference voltage of ADC is 5v
adc_ref = 5

# Vcc of the grove interface is normally 5v
grove_vcc = 5

# Full value of the rotary angle is 300 degrees, as per it's specs (0 to 300)
full_angle = 300

while True:
    try:
        # Read sensor value from potentiometer
        sensor_value = grovepi.analogRead(potentiometer)

        # Calculate voltage
```

```
voltage = round((float)(sensor_value) * adc_ref / 1023, 2)

# Calculate rotation in degrees (0 to 300)
degrees = round((voltage * full_angle) / grove_vcc, 2)

# Calculate LED brightness (0 to 255) from degrees (0 to 300)
brightness = int(degrees / full_angle * 255)

# Give PWM output to LED
grovepi.analogWrite(led, brightness)

print "sensor_value =", sensor_value, " voltage =", voltage, " degrees =", degrees, "
brightness =", brightness

except IOError:
    print "Error"
```

Run the program

- Find the path to the file(According to your own path)

```
cd GrovePi/Software/Python/
```

- Run Program

```
sudo python grove_rotary_angle_sensor.py
```

5. Resource

- [Grove-Rotary Angle v1.2 Sensor Eagle File](#)
- [Grove-Rotary Angle Sensor Eagle File](#)
- [github repository for Rotary Angle Sensor](#)

Mouser Electronics

Authorized Distributor

Click to View Pricing, Inventory, Delivery & Lifecycle Information:

[Seeed Studio:](#)

[101020048](#)