



# BW-12D1S-U

## Extreme 12X Blu-ray Writing Speed with USB 3.0

BW-12D1S-U is an external Blu-ray disc drive that provides fastest 12X writing speed with innovative USB 3.0, which is 2X faster compared with USB 2.0. BW-12D1S-U support Blu-ray 3D entertainment, creating a fantastic 3D world for users.

### FEATURE

#### Magic Cinema Technology

##### Experience Blu-ray Entertainment So True to Life

- Eye-popping Blu-ray 3D visual excitement
- Transform 2D/DVD video content to 3D/HD video easily
- Experience crisp audio with lossless pass-through for Dolby Digital EX and DTS-HD (5.1 channels)

#### Superior Burning Innovation

##### Extreme 12X Blu-ray writing speed with USB 3.0

- Fastest 12X Blu-ray burning speed
- The best burning quality is assured by OTS technology
- USB 3.0 doubles transmission speed compared with USB 2.0

#### Aesthetics of Technology

##### Diamond-shaped Design

- The unique blue power indicator is inspired by diamonds, with its edges leading to different lines and different materials of the device.
- Space-saving design can be placed either horizontally or vertically with an included stand.



### Package Contents

- ASUS BW-12D1S-U Drive with detachable stand & USB 3.0 cable
- Bundled software: Cyberlink PowerDVD 10 with Magic Cinema
- Multilingual quick installation guide



### SPECIFICATIONS

Read Speed	• BD-R(SL/DL):8X
	• BD-RE:8X
	• BD-ROM(SL/DL):8X
	• BD-RE(DL):6X
	• BD-R(LTH):6X
	• DVD±R/ROM:16X
	• DVD±RW/±R(DL)/ROM(DL):12X
	• DVD-RAM:5X
	• CD-R/ROM:40X
	• CD-RW:24X
	• DVD video playback:5X
	• VCD/Audio CD playback:9.3X

Write Speed	• BD-R:12X
	• BD-R(LTH):6X
	• BD-RE(SL/DL): 2X
	• BD-R(DL): 8X
	• DVD±R:16X
	• DVD±RW:8X
	• DVD±R(DL):8X
	• DVD-RW:6X
	• DVD±R(DL): 8X
	• DVD-RAM: 5X
	• CD-R:40X
	• CD-RW:24X

#### Color

#### Access Time (1/3 Stroke)

#### Interface

#### Data Buffer

#### O/S Compatibility

#### Configurations

#### Mounting Orientation

#### Dimensions

#### Weight

#### Power Requirement

#### Temperature

#### Humidity

#### • Black

#### Random Seek

- BD: 250ms
- DVD:170ms
- CD:150ms

#### • USB 3.0 / USB 2.0

#### • 4 MB

#### • Windows® 7 / Vista / XP

#### • Vertical and Horizontal (+5° ~ -5°)

#### • 243 x 165 x 63 mm(L/W/H)

#### • 1160g (1290g with stand)

### Electrical and Environmental Specifications

#### • Adapter 12V 3A

- Operating: 5°C to 40°C
- Storage: -30°C to 60°C

#### • Operating:15%~80% (Non-condensing)

#### • Storage: 10% ~ 90% (Non-condensing)

⊙ Specifications are subject to changes without notice. ⊙ All other brands and names are properties of their respective owners. ⊙ For more details, please contact the addresses below.

#### ASUSTeK Computer Inc.

15 Li-Te Road, Peitou, Taipei, Taiwan, R.O.C. Tel: + 886-2-2894-3447. Fax: + 886-2-2896-7761 <http://www.asus.com>

#### ASUS Computer International

800 Corporate Way, Fremont, CA 94539, USA. Tel: +1-510-739-3777. Fax: +1-510-608-4555 <http://usa.asus.com>

#### ASUS Computer GmbH.

Harkort Str. 21-23, D-40880, Ratingen, Germany. Tel: + 49-2102-9599-0. Fax: + 49-2102-9599-11 <http://www.asus.de>

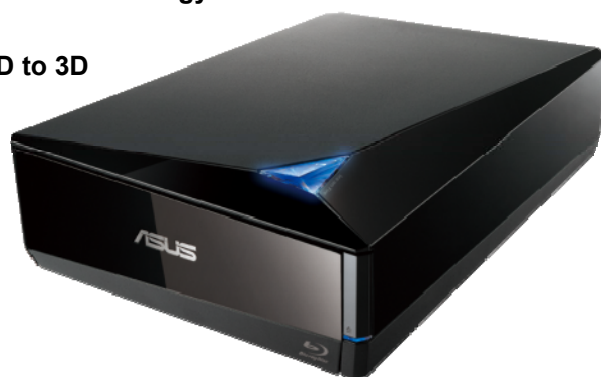


# External Blu-ray Disc Writer

BW-12D1S-U

## Extreme 12X Blu-ray writing speed with USB 3.0

- Fastest 12X Blu-ray burning speed and best burning quality by OTS technology
- USB 3.0 doubles transmission speed compared with USB 2.0
- Magic Cinema technology enables Blu-ray 3D entertainment, 2D to 3D conversion, DVD upscaling
- Diamond-Shaped Design realize aesthetics of technology



### ASUS Innovations



#### Magic Cinema Technology

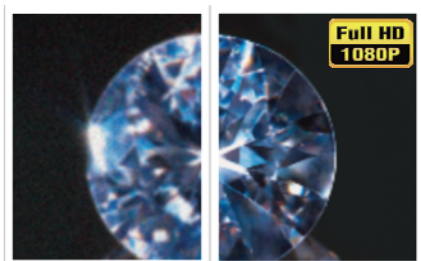
Normal 2D videos

Enjoy 3D!



Disabled

Enabled



#### Eye-popping Blu-ray 3D Visual Excitement

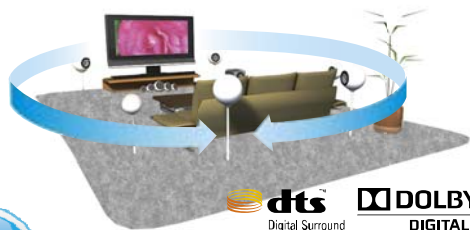
Supports the latest Blu-ray 3D technology for life-like movie experiences with Cyberlink PowerDVD 10. Features technology to give depth to 2D video with real-time 2D-to-3D conversion with a single click of a button.

#### Experience Blu-ray Entertainment So True to Life

ASUS provides HD-like visuals via an innovative suite of advanced video enhancement technologies that deliver unsurpassed quality in DVD movies easily and flexibly.

#### Refresh Your Listening Experience

Experience crisp audio with lossless pass-through for Dolby Digital EX and DTS-HD (5.1 channels).



#### Aesthetics of Technology

#### Diamond-shaped Design

This unique space-saving design can be placed either horizontally or vertically with a detachable stand.

#### Flexible Dual Positioning

This unique space-saving design can be placed either horizontally or vertically with a detachable stand.

