

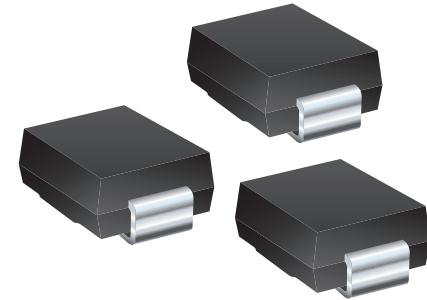
*ESD Protection Product Solutions*  
***Bourns® TVS SMC Package Diode Design Kit***

**RoHS  
Compliant**

\*RoHS Directive 2015/863, Mar 31, 2015  
and Annex.

**TRANSIENT VOLTAGE SUPPRESSOR (TVS) DIODES**  
SMLJ Series

Design Kits for most Bourns® product lines are available.  
Contact your nearest Bourns sales office for more information.



**BOURNS®**

**CD-LAB9**



**SMLJ6.5A**  
 $V_{WM} = 6.5 V$   
 Unidirectional  
 Single Line

**SMLJ10CA**  
 $V_{WM} = 10 V$   
 Bidirectional  
 Single Line

**SMLJ13A**  
 $V_{WM} = 13 V$   
 Unidirectional  
 Single Line

**SMLJ15A**  
 $V_{WM} = 15 V$   
 Unidirectional  
 Single Line

**SMLJ15CA**  
 $V_{WM} = 15 V$   
 Bidirectional  
 Single Line

**SMLJ16A**  
 $V_{WM} = 16 V$   
 Unidirectional  
 Single Line

**SMLJ17A**  
 $V_{WM} = 17 V$   
 Unidirectional  
 Single Line

**SMLJ20A**  
 $V_{WM} = 20 V$   
 Unidirectional  
 Single Line

**SMLJ20CA**  
 $V_{WM} = 20 V$   
 Bidirectional  
 Single Line

**SMLJ24A**  
 $V_{WM} = 24 V$   
 Unidirectional  
 Single Line

**SMLJ24CA**  
 $V_{WM} = 24 V$   
 Bidirectional  
 Single Line

**SMLJ26A**  
 $V_{WM} = 26 V$   
 Unidirectional  
 Single Line

**SMLJ26CA**  
 $V_{WM} = 26 V$   
 Bidirectional  
 Single Line

**SMLJ28CA**  
 $V_{WM} = 28 V$   
 Bidirectional  
 Single Line

**SMLJ30A**  
 $V_{WM} = 30 V$   
 Unidirectional  
 Single Line

**SMLJ30CA**  
 $V_{WM} = 30 V$   
 Bidirectional  
 Single Line

**SMLJ33A**  
 $V_{WM} = 33 V$   
 Unidirectional  
 Single Line

**SMLJ33CA**  
 $V_{WM} = 33 V$   
 Bidirectional  
 Single Line

**SMLJ36CA**  
 $V_{WM} = 36 V$   
 Bidirectional  
 Single Line

**SMLJ40A**  
 $V_{WM} = 40 V$   
 Unidirectional  
 Single Line

**SMLJ45A**  
 $V_{WM} = 45 V$   
 Unidirectional  
 Single Line

**SMLJ48A**  
 $V_{WM} = 48 V$   
 Unidirectional  
 Single Line

**SMLJ48CA**  
 $V_{WM} = 48 V$   
 Bidirectional  
 Single Line

**SMLJ51CA**  
 $V_{WM} = 51 V$   
 Bidirectional  
 Single Line

**SMLJ54CA**  
 $V_{WM} = 54 V$   
 Bidirectional  
 Single Line

**SMLJ58A**  
 $V_{WM} = 58 V$   
 Unidirectional  
 Single Line

**SMLJ58CA**  
 $V_{WM} = 58 V$   
 Bidirectional  
 Single Line

**SMLJ64CA**  
 $V_{WM} = 64 V$   
 Bidirectional  
 Single Line

**SMLJ70CA**  
 $V_{WM} = 70 V$   
 Bidirectional  
 Single Line

**SMLJ75CA**  
 $V_{WM} = 75 V$   
 Bidirectional  
 Single Line

**SMLJ85CA**  
 $V_{WM} = 85 V$   
 Bidirectional  
 Single Line

**SMLJ150CA**  
 $V_{WM} = 150 V$   
 Bidirectional  
 Single Line