

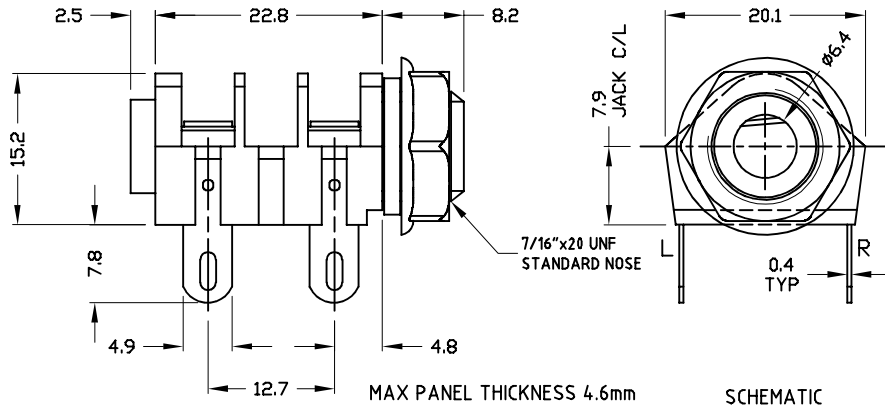
CLIFF

GOLD SWITCHED JACK SOCKETS

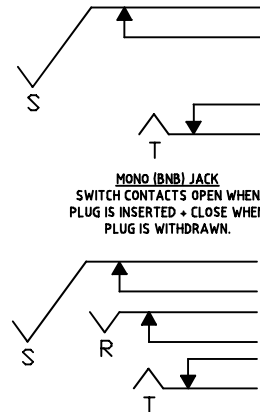
6.35mm JACK SOCKET



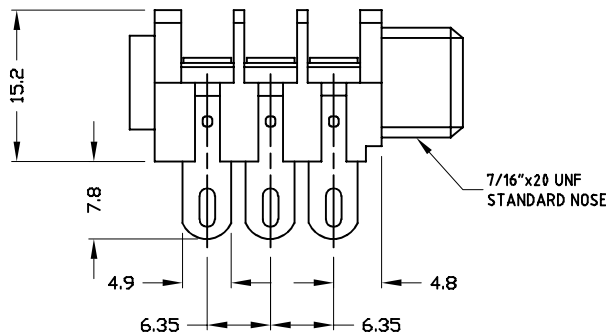
CL11607



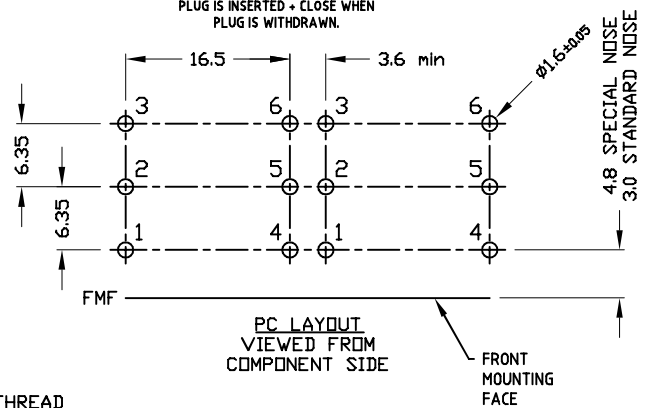
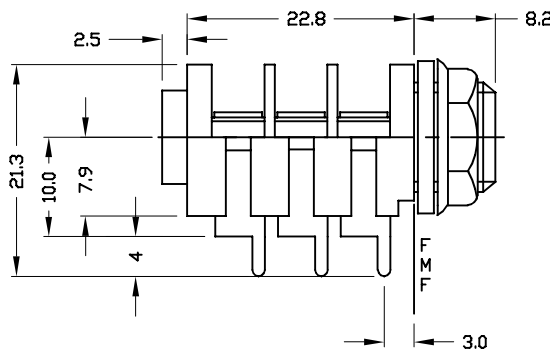
SCHEMATIC



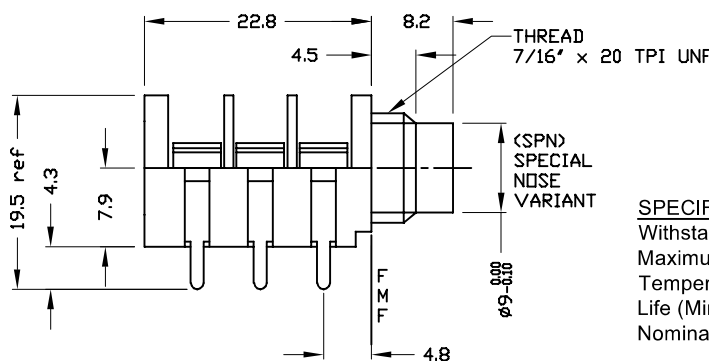
CL12207



CL12327



CL12345



SPECIFICATION

Withstand voltage:	2000V DC Min.
Maximum Current:	5A
Temperature Rating:	-10° C to +70° C
Life (Minimum):	10,000+ Operations
Nominal Contact Resistance:	<50mΩ

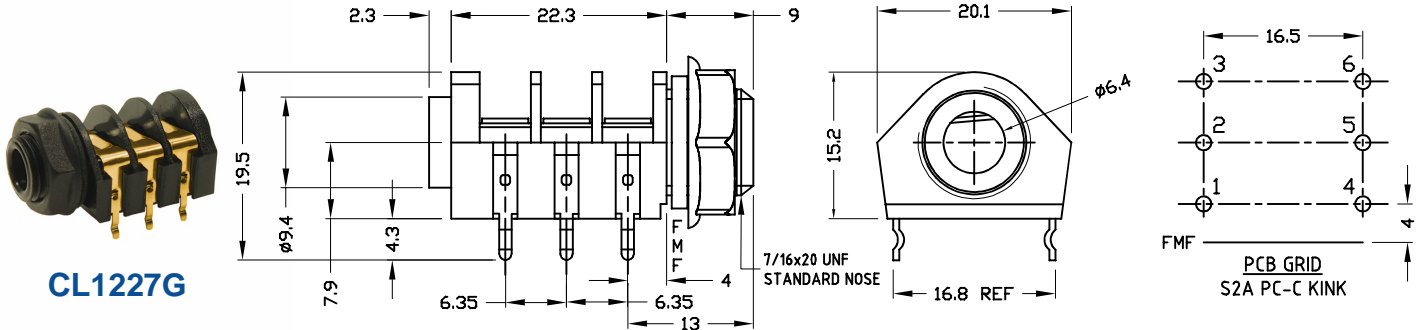
DESCRIPTION

- CL11607** - Jack Socket Mono S2/BNB Solder Tag
- CL12207** - Jack Socket Stereo S2/BBB Solder Tag
- CL12327** - Jack Socket Stereo S2/BBB PC Tag Type A.
- CL12345** - Jack Socket Stereo S2/BBB Special Nose PC Tag Type C. No nut or washers.

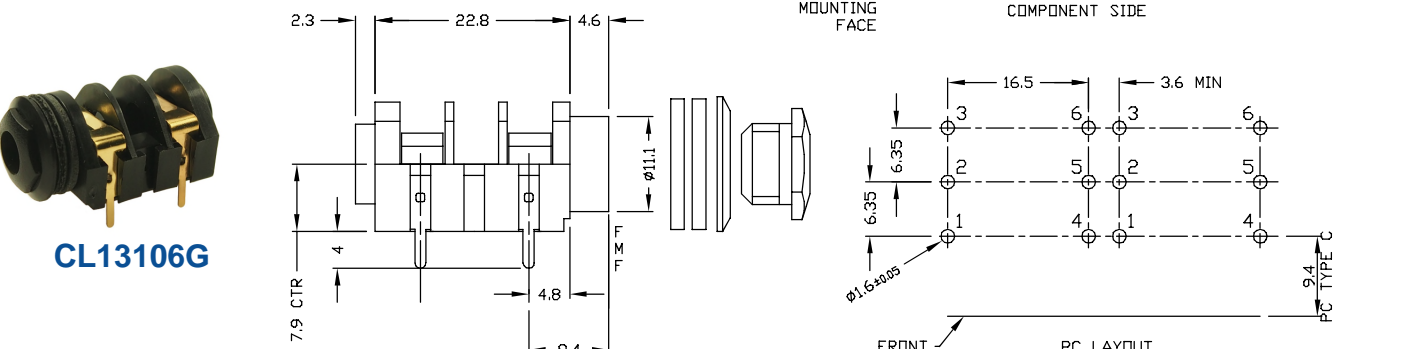
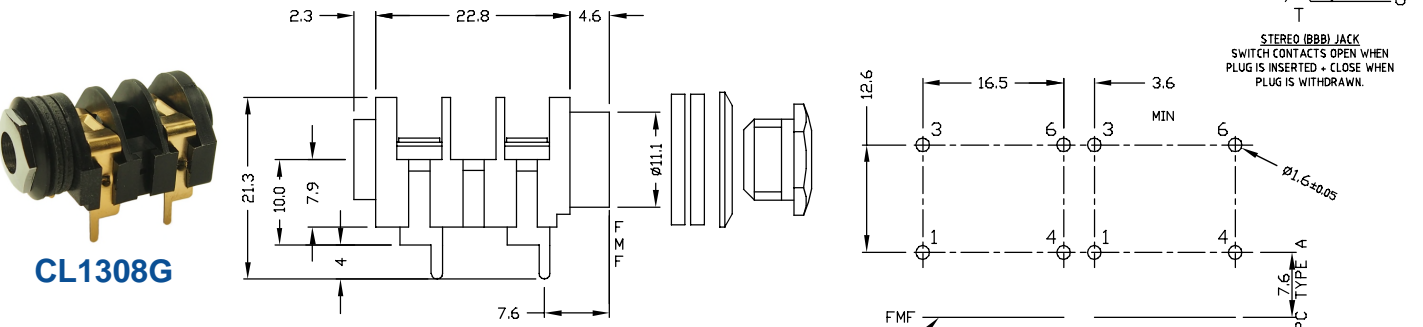
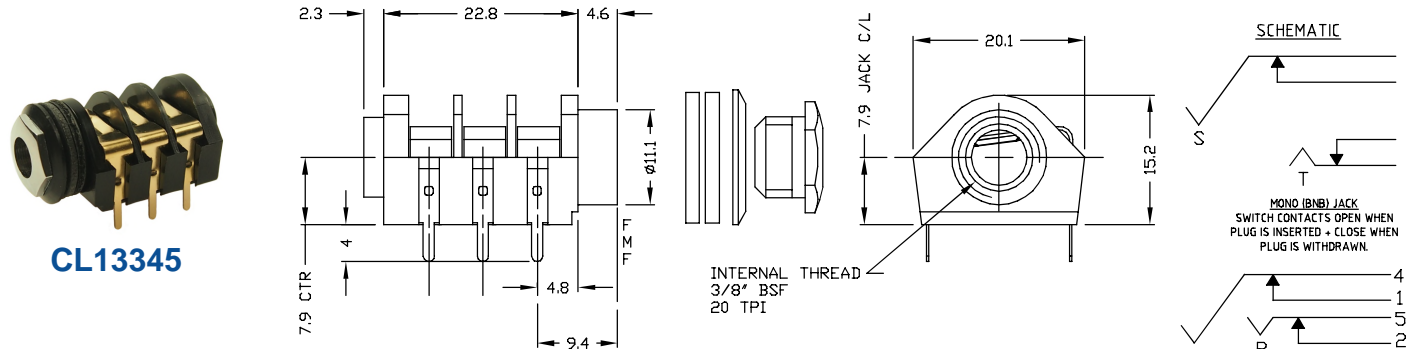
CLIFF

GOLD SWITCHED JACK SOCKETS

6.35mm JACK SOCKET

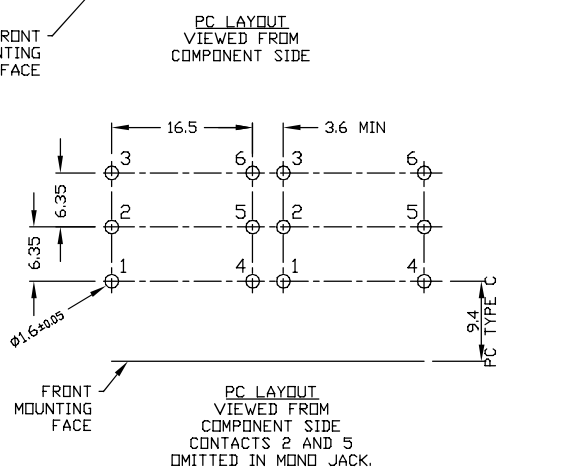


6.35mm JACK SOCKET



DESCRIPTION

- CL1227G** - Jack Socket Stereo S2A/BBB PC tag type C Kinked
- CL13345** - Jack Socket Stereo S4/BBB PC tag type C
- CL1308G** - Jack Socket Mono S4/BNB PC tag type A
- CL13106G** - Jack Socket Mono S4/BNB PC tag type C



CLIFF

GOLD SWITCHED JACK SOCKETS

3.5mm JACK SOCKET



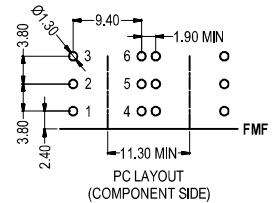
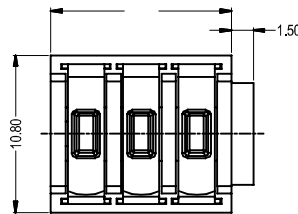
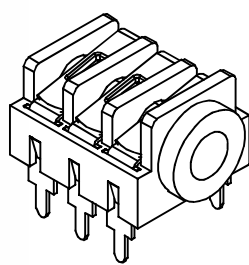
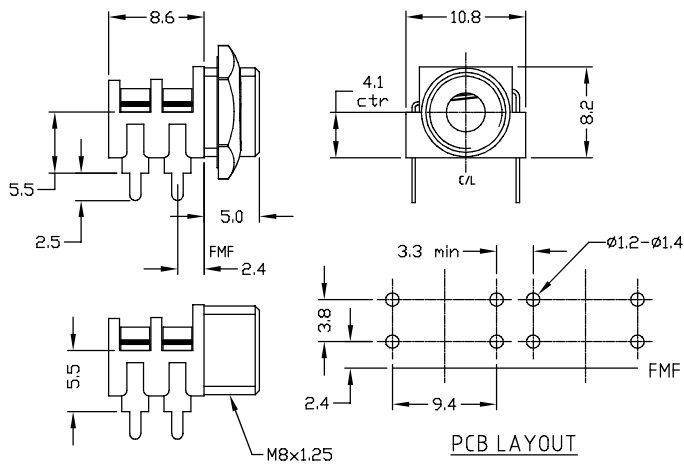
CL13845G



CL13843G

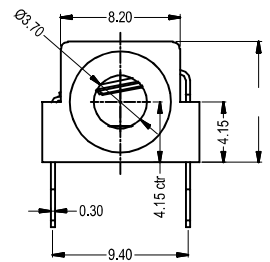
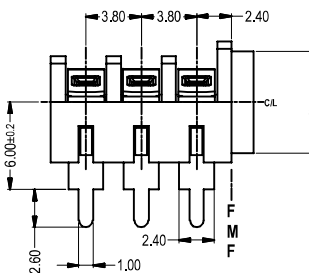
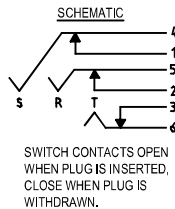


FCR1295G



SPECIFICATIONS

- WITHSTAND VOLTAGE: 2000V DC min
- MAXIMUM CURRENT: 5A
- TEMPERATURE RANGE: -10°C TO +70°C
- LIFE (MINIMUM): 5,000+ OPERATIONS
- CONTACT RESISTANCE <50mΩ



DESCRIPTION

CL13845G - 3.5mm Jack Socket S6G/BB with nut

CL13843G - 3.5mm Jack Socket S6G/BB without nut

CL1295G - 3.5mm Stereo Jack Socket S9/BBB with 6mm PCB legs

JACK SOCKET ACCESSORIES



FCR1442 - EMI / RFI SCREEN FOR 6.35mm JACK SOCKETS

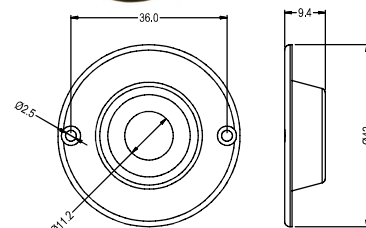


CL14218 - BLACK COMBINED NUT/BEZEL FOR S4 TYPE JACK SOCKET



CL14218GY - GREY COMBINED NUT/BEZEL FOR S4 TYPE JACK SOCKET

CL1396 - RECESS PLATE TO ALLOW FLUSH MOUNTING OF 6.35mm JACK SOCKETS



For further information, contact sales@cliffuk.co.uk