

AC Frame Solenoid



Model 11HD

Features:

- Available return spring kit
- AC & DC Applications
- See Model 11HD DC
- UL recognized

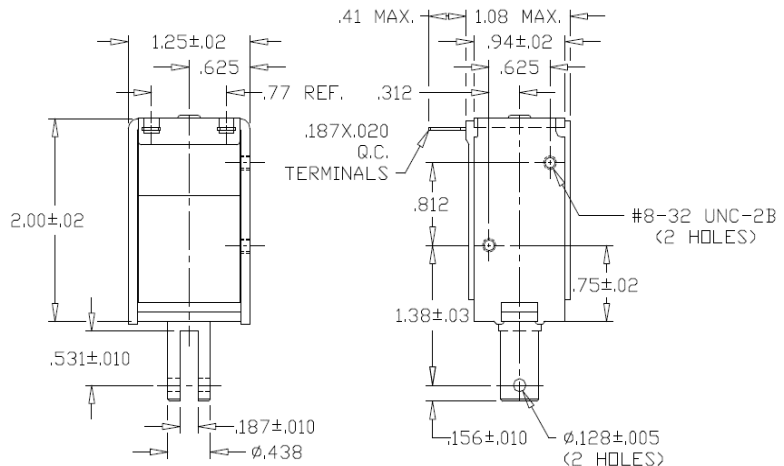
Electrical:

- Coil Voltages: 24, 120, 240 VAC standard
- Coil Termination: 3/16" QC terminals
- Duty Cycle: 100% Continuous, 25% Intermittent, 10% Intermittent, 1% Pulse
- Coil treatment: Plastic cover
- Insulation Class: Class A Rating - 105° C (221° F)
- Dielectric Strength: 1500V 60 Hz

Mechanical:

- Size: 1.54" (L) x 1.62" (W) x 1.57" (H)
- Plunger Diameter: 0.438"
- Plunger Guide Material: Plastic
- Mounting: 2 - #8-32 holes
- Weight: Plunger 1.3 oz, Total 6.6 oz
- Life Expectancy: 1 Million Cycles¹

¹ - Dependent on load conditions



Solenoid shown energized with plunger fully seated

Standard Part Numbers

Model No.	Part No.	Duty Cycle	Voltage	Resistance ² (Ω)	Power (W)	Current
11HD-C-120A	A420-065756-00	Cont.	120VAC	165	16	133 mA
11HD-I-120A	A420-065757-00	Inter. 20%	120VAC	75	40	333 mA
11HD-C-240A	A420-065758-00	Cont.	240VAC	660	16	67 mA
11HD-I-240A	A420-065759-00	Inter. 20%	240VAC	300	40	167 mA

² - Coil resistance tolerance +/- 5%

Contact us for custom voltages or duty cycles



Available Customization:

- Plunger
 - AC Voltage
 - Duty Cycle
 - Insulation systems up to class H 180° C (356° F)
- * Minimum quantities apply

Stroke (in.)	Typical Pull Force Ounces [N] @ 20°C (68°F) (Distance from fully seated position)							HOLDING FORCE Ounces [N]
	0.125	0.250	0.375	0.500	0.625	0.750	1.0	
Continuous 100%	12 [3.3]	10 [2.8]	10 [2.8]	9 [2.5]	8 [2.2]	7 [1.9]	3 [0.8]	50 [13.9]
Intermittent 20%	24 [6.7]	20 [5.6]	19 [5.3]	18 [5]	17 [4.7]	16 [4.4]	7 [1.9]	85 [23.6]

Optional Return Spring Kit

A490-367462-06

Continuous Duty = 100% On Time
Intermittent Duty 20% = 20% On Time (4 Minutes On Max Followed By 16 Minutes Off)



GUARDIAN-ELECTRIC.COM

1425 Lake Ave - Woodstock IL 60098 - Phone: 800-762-0369
The information is subject to change without notice. © Guardian Electric

