

# AC Frame Solenoid



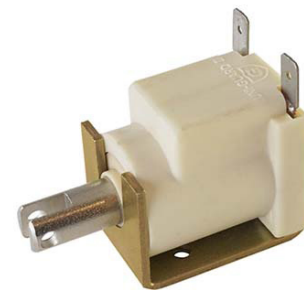
## Model 24

### Features:

- Available return spring kit
- AC & DC Applications
- See Model 24 DC
- UL recognized

### Electrical:

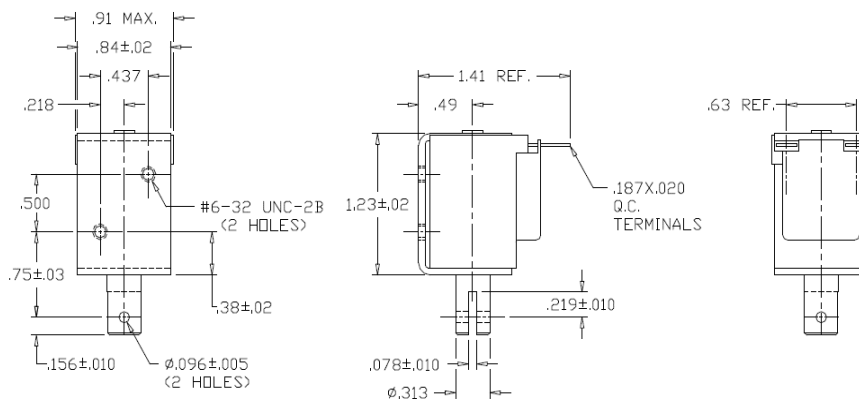
- Coil Voltages: 24, 120, 240 VAC standard
- Coil Termination: 3/16" QC terminals
- Duty Cycle: 100% Continuous, 25% Intermittent, 10% Intermittent, 1% Pulse
- Coil treatment: Plastic cover
- Insulation Class: Class A Rating - 105° C (221° F)
- Dielectric Strength: 1500V 60 Hz



### Mechanical:

- Size: 1.23" (L) x 0.91" (W) x 1.11" (H)
- Plunger Diameter: 0.313"
- Plunger Guide Material: Plastic
- Mounting: 2 - #6-32 holes
- Weight: Plunger 0.5 oz, Total 2.4 oz
- Life Expectancy: 1 Million Cycles<sup>1</sup>

<sup>1</sup> - Dependent on load conditions



Solenoid shown energized with plunger fully seated

### Standard Part Numbers

Model No.	Part No.	Duty Cycle	Voltage	Resistance <sup>2</sup> (Ω)	Power (W)	Current
24-C-120A	A420-065816-00	Cont.	120VAC	500	7.5	63 mA
24-I-120A	A420-065817-00	Inter. 20%	120VAC	310	14	117 mA
24-C-240A	A420-065818-00	Cont.	240VAC	2000	7.5	31 mA
24-I-240A	A420-065819-00	Inter. 20%	240VAC	1240	14	58 mA

<sup>2</sup> - Coil resistance tolerance +/- 5%

Contact us for custom voltages or duty cycles

**Available Customization:**

- Plunger
- AC Voltage
- Duty Cycle
- Insulation systems up to class H 180° C (356° F)

**\* Minimum quantities apply**

Stroke (in.)	Typical Pull Force Ounces [N] @ 20°C (68°F) (Distance from fully seated position)						HOLDING FORCE Ounces [N]
	0.125	0.250	0.375	0.500	0.625	0.750	
Continuous 100%	8 [2.2]	6 [1.7]	5 [1.4]	4 [1.1]	2 [0.6]	1 [0.3]	20 [5.6]
Intermittent 20%	14 [3.9]	10 [2.8]	8 [2.2]	6 [1.7]	4 [1.1]	2 [0.6]	23 [6.4]

Continuous Duty = 100% On Time  
Intermittent Duty 20% = 20% On Time (4 Minutes On Max Followed By 16 Minutes Off)

Optional Return Spring Kit

A490-367462-08



**GUARDIAN-ELECTRIC.COM**

1425 Lake Ave - Woodstock IL 60098 - Phone: 800-762-0369  
The information is subject to change without notice. © Guardian Electric

