

In-Line, Non-Return Valves
1/8", 1/4", 3/8", 1/2", 3/4", 1"

- Permit free flow of air in one direction only
- Simple, reliable design
- High operating pressure



Technical Data

Medium:

Compressed air, filtered, lubricated and non-lubricated

Operation:

Non-return valve

Mounting:

Line mounted,

Port Sizes:

BSPP		NPT	
G1/8	S/520	1/8 NPT	C/520
G1/4	S/521	1/4 NPT	C/521
G3/8	S/532	3/8 NPT	C/532
G1/2	S/522	1/2 NPT	C/522
G3/4	S/523	3/4 NPT	C/523
G1	S/524	1 NPT	C/524

Operating Pressure:

0,3 - 16 bar

Operating Temperature:

-20°C* to +80°C

*Consult our Technical Service for use below +2°C
For high temperature applications (150°C Max) TM, TC/520 Series version should be ordered

Materials

Brass body, nitrile rubber seals, aluminium valve

Note: Viton Seals for high temperature version

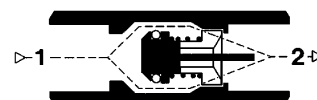
Ordering Information

To order, quote model number from table overleaf, e.g. S/521 for the G1/4 model

Alternative Models

T50 Series In-line push-in non-return valves
see page 5.10.002

0400 Series Non return valves,
see page X.X.XXX.XX





General Information

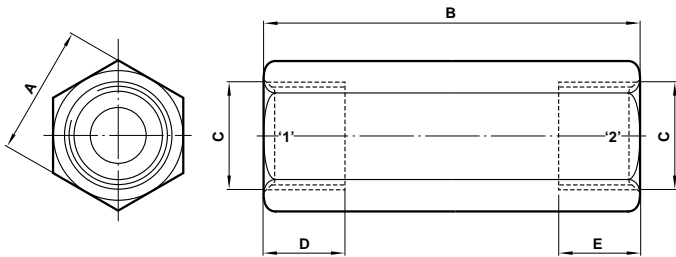
Model BSPP	NPT	Port size	Free Flow Flow factor		Weight (kg)	Spares Kit	
			C*	Cv**		BSPP	NPT
S/520	C/520	1/8	2,4	0,6	0,04	QS/520/00	QC/520/00
S/521	C/521	1/4	4,3	1	0,09	QS/521/00	QC/521/00
S/532	C/532	3/8	9,2	2,2	0,14	QS/532/00	QC/532/00
S/522	C/522	1/2	14,6	3,6	0,21	QS/522/00	QC/522/00
S/523	C/523	3/4	24,4	6,5	0,55	QS/523/00	QC/523/00
S/524	C/524	1	36,3	8,9	1,10	QS/524/00	QC/524/00

*C : measured in $\text{dm}^3/(\text{s}\cdot\text{bar})$

**CV : measured in US gall/min

Note : For high temperature applications a T should be added on spares kit part number (i.e. TQS/520/00)

Non-return Valve



Model	S/520 (BSPP) C/520 (NPT)	S/521 (BSPP) C/521 (NPT)	S/532 (BSPP) C/532 (NPT)	S/522 (BSPP) C/522 (NPT)	S/523 (BSPP) C/523 (NPT)	S/524 (BSPP) C/524 (NPT)
A	14	19	22	27	36	49
B	43	48	62	76	92	124
C	1/8	1/4	3/8	1/2	3/4	1
D	10	11	13	17	18	25
E	10	11	13	17	18	25

BSPP = According to BS2779 and ISO-228/1

NPT = Products are finished with National Pipe Straight Threads for Couplings, which are specifically designed to mate with NPT male threads

Warning

These products are intended for use in industrial compressed air systems only. Do not use these products where *pressures* and *temperatures* can exceed those listed under 'Technical Data'.

Before using these products with fluids other than those specified, for non-industrial applications, life-support systems, or other applications not within published specifications, consult Norgren.

Through misuse, age, or malfunction, components used in fluid power systems can fail in various modes. The system designer is warned to consider the failure modes of all component parts used in fluid power systems and to provide adequate safeguards to prevent personal injury or damage to equipment in the event of such failure.

System designers must provide a warning to end users in the system instructional manual if protection against a failure mode cannot be adequately provided.

System designers and end users are cautioned to review specific warnings found in instruction sheets packed and shipped with these products where applicable.