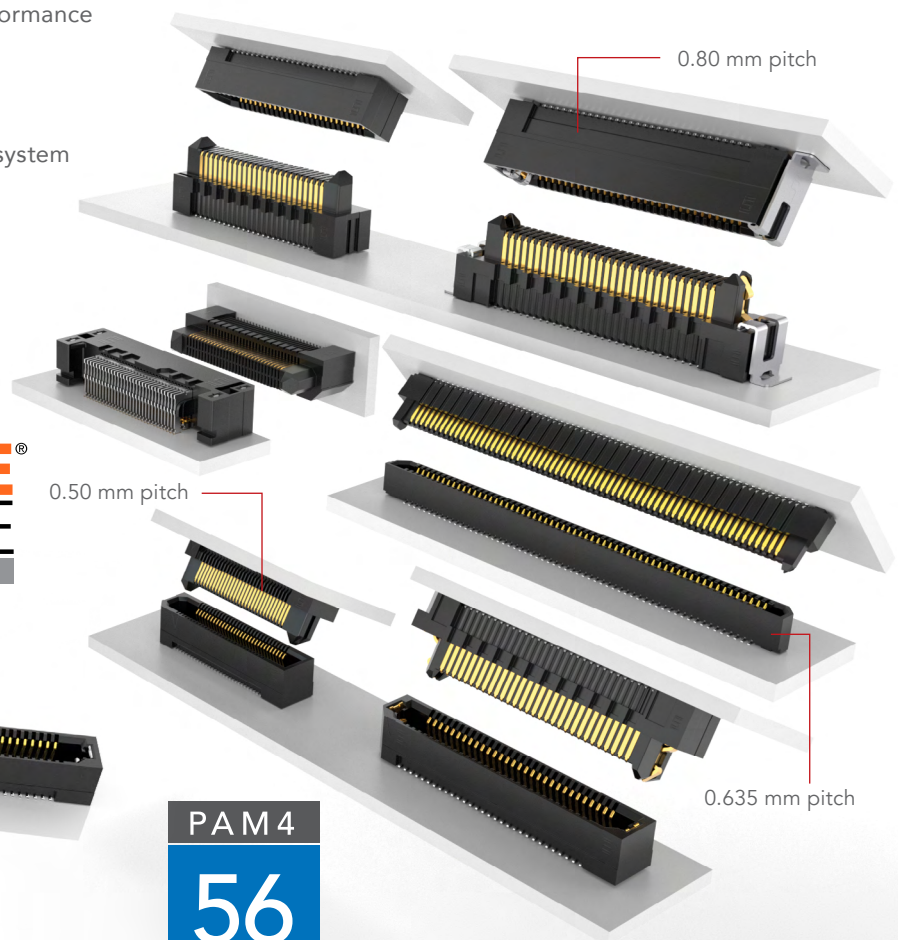




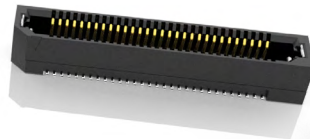
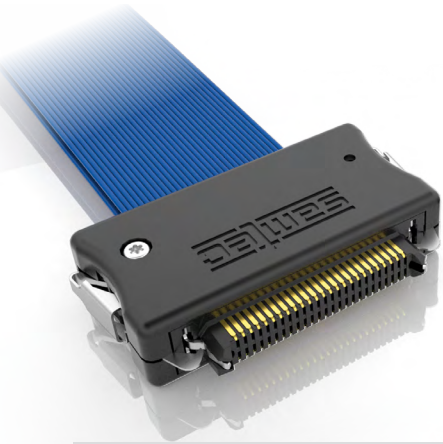
RUGGED HIGH-SPEED STRIPS

EDGE RATE® INTERCONNECTS

- Edge Rate® contacts optimized for signal integrity performance
- Up to 1.5 mm contact wipe for a reliable connection
- 10 – 200 positions
- Extremely slim 2.5 mm body width on 0.635 mm pitch system
- 0.50 mm pitch system for up to 40% space savings vs. 0.80 mm pitch system
- 0.80 mm pitch coax and twinax cable assemblies
- Rugged latching, locking and 360° shielding available
- Edge mount and right-angle available
- Compatible with UMPT/UMPS for power/signal flexibility

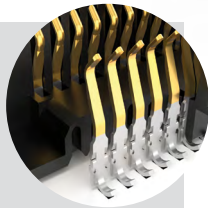


EDGE RATE
CONTACT

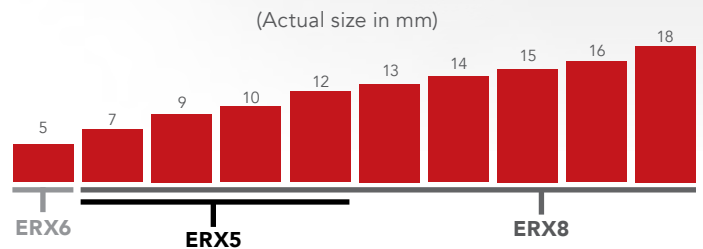


Edge Rate® Contact System

- Smooth milled mating surface reduces wear and increases durability
- Lower insertion and withdrawal forces
- Robust when “zippered” during unmating
- Minimized parallel surface area reduces broadside coupling and crosstalk
- Designed, simulated and optimized for 50 Ω and 100 Ω systems



STACK HEIGHT FLEXIBILITY

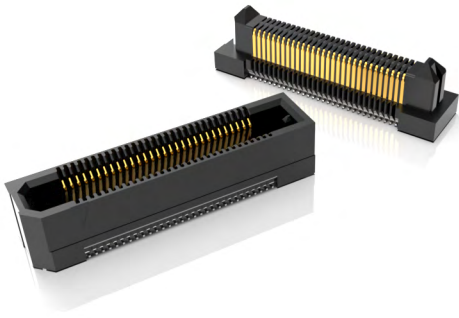


System

- ERM5/ERF5 – 0.50 mm Pitch Strips
- ERM6/ERF6 – 0.635 mm Pitch Strips
- ERM8/ERF8 – 0.80 mm Pitch Strips
- ERCD – 0.80 mm Pitch Coax Cable Assembly
- ERDP – 0.80 mm Pitch Twinax Cable Assembly

For more about Samtec's Edge Rate® solutions, please visit www.samtec.com/edgerate

EDGE RATE[®] SOLUTIONS



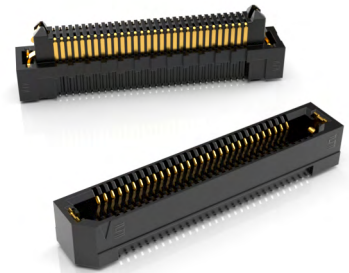
ERM5/ERF5

0.50 mm pitch, up to 150 positions
7 - 12 mm stack heights
Right-angle available (socket only)



ERM6/ERF6

0.635 mm pitch, up to 120 positions
5 mm stack height
Slim 2.5 mm body width



ERM8/ERF8

0.80 mm pitch, up to 200 positions
7 - 18 mm stack heights
Edge mount and right-angle available



ERCD

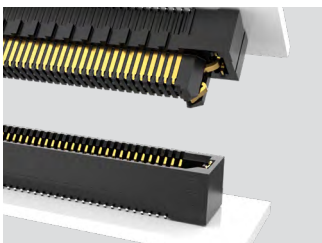
0.80 mm pitch, up to 120 positions
34 AWG micro coax cable



ERDP

0.80 mm pitch, up to 98 positions
30 AWG twinax cable

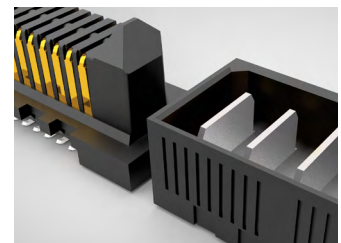
ALSO AVAILABLE



Rugged metal latching for increased retention force



360° shielding option reduces EMI



Micro power system (UMPT/UMPS) for power/signal flexibility

For more about Samtec's Edge Rate[®] solutions, please visit www.samtec.com/edgerate