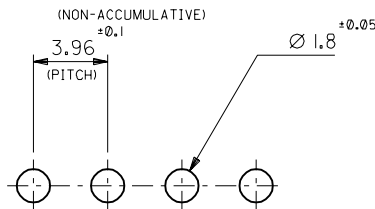
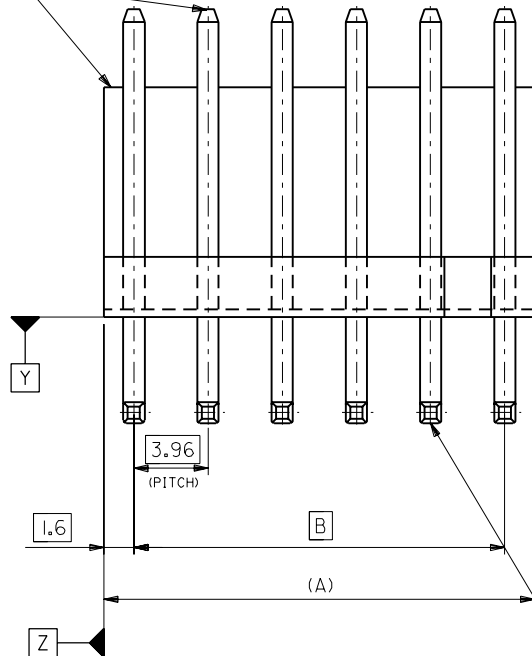
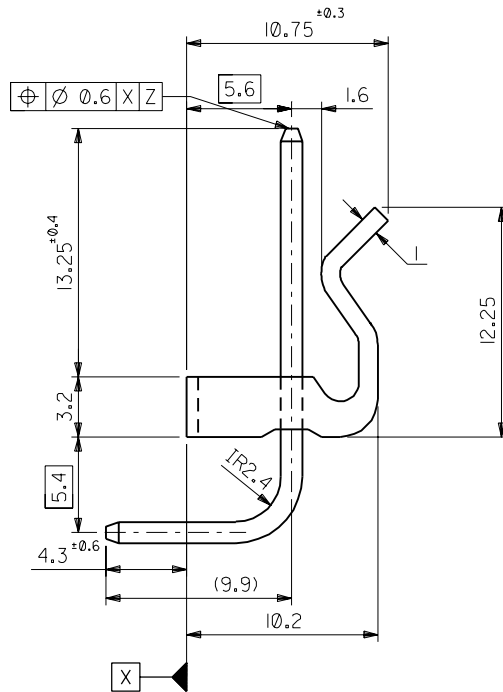


WAFER(NYLON66,94V-2)

PIN (□1.14×30.48,BRASS,TIN OVER COPPER PLATING)



RECOMMENDED PC BOARD HOLE DIMENSION



NOTES

- 1.( ):REFERENCE
- 2.CAMBER MUST BE WITHIN 0.24 MAX.PER25.4

55.44	58.64	39-28 - 0158	5180 - 15A	15
51.48	54.68	↑ - 0148	↑ - 14A	14
47.52	50.72	- 0138	- 13A	13
43.56	46.76	- 0128	- 12A	12
39.6	42.8	- 0118	- 11A	11
35.64	38.84	- 0108	- 10A	10
31.68	34.88	- 0098	- 09A	9
27.72	30.92	- 0088	- 08A	8
23.76	26.96	- 0078	- 07A	7
19.8	23	- 0068	- 06A	6
15.84	19.04	- 0058	- 05A	5
11.88	15.08	- 0048	- 04A	4
7.92	11.12	↓ - 0038	↓ - 03A	3
3.96	7.16	39-28 - 0028	5180 - 02A	2
(B)	A	EDP.NO.	ENG.NO.	NO. OF CKTS.

角度 ANGLE	±3°				
30以上 OVER	±0.3				
10以上 30未滿 UNDER	±0.25				
10未滿 UNDER	±0.2				
一般公差 GENERAL TOLERANCES		記号 LTR	変更内容 REVISION RECORD	DR. / CHK.	日付 DATE
		A	REDRAWN (JC70307)	H.I.	196/06/20
				S.K.	196/06/20
				DR.	196/06/20
				CHK.	196/06/20
				DATE	196/06/20

材料 MATERIAL	— // —
仕上げ FINISH	— // —
適用電線範囲 WIRE RANGE	— // —
被覆外径 INS. RANGE	— // —
DRAWN BY '96/06/20	CHK'D BY '96/06/20
H.IIJIMA	M.FUKUSHIMA
APP'D BY '96/06/20	尺度 SCALE 4 : 1
M.ENOMOTO	

MOLEX-JAPAN CO.,LTD. 日本モレックス株式会社	
REVISE ONLY ON CAD SYSTEM	
TITLE 名称	
KK 3.96 WAFER ASS'Y WITH LOCK	
DWG. NO.	REV
SD-5180-NA	A