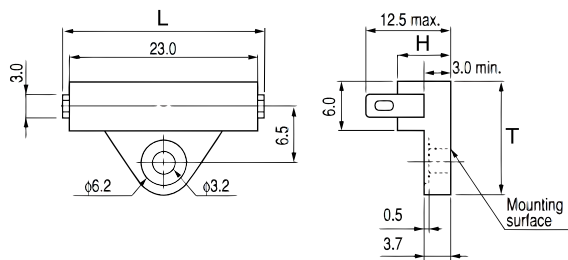


KEMET, OHD, Thermal Reed Switch, Radial Tab, 5C Temperature Accuracy, High Reliability, High-Speed Response, Long Operational Life, Excellent Environmental Durability, High Temperature Accuracy, 50C, Make



| General Information | |
|---------------------|---|
| Series: | OHD |
| Type: | Thermal Reed Switch |
| Style: | Radial Tab |
| Description: | Thermal Guard |
| Features: | High Reliability, High-Speed Response, Long Operational Life, Excellent Environmental Durability, High Temperature Accuracy |
| Lead: | Tab Leads |
| RoHS: | Yes |

| Dimensions | |
|------------|----------|
| L | 27mm MAX |
| H | 6mm |
| T | 13.5mm |

| Packaging Specifications | |
|----------------------------|-----------|
| Packaging: | Tray, Box |
| Packaging Quantity: | 1000 |
| Weight: | 2.8 g |

| Specifications | |
|-------------------------------------|---|
| Switching Temperature: | 50C +/-5C |
| Temperature Range: | -20/+150C |
| Contact Type: | Make |
| Voltage DC: | 110 VDC MAX (Opening/Closing), 2500 VAC/1 minute or 3000 VAC/1 second |
| Voltage AC: | 110 VAC MAX (Opening/Closing) |
| Current: | 0.3 Amps AC/DC MAX (Opening/Closing), 0.1 mAmps MIN (1VDC, Opening/Closing) |
| Resistance: | 150 mOhms MAX (Contact Resistance) |
| Max Opening/Closing Power: | 6 W (AC/DC) |
| Max Opening/Closing Voltage: | 110 V (AC/DC) |
| Differential Temperature: | 10C Maximum |